

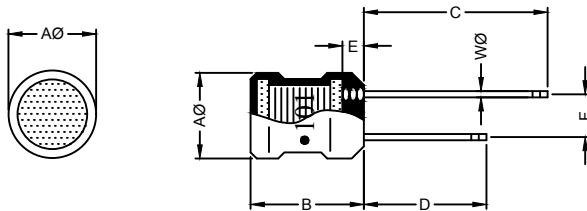
RADIAL CHOKE COIL

RCB0506 SERIES

1. PART NO. EXPRESSION :

R	C	B	0	5	0	6	1	0	1	M	Z	F
(a)	(b)	(c)	(d)(e)(f)				(a) Series code				(d) Tolerance code : K = ±10%, M = ±20%	
						(b) Dimension code				(e) X, Y, Z : Standard part		
						(c) Inductance code : 101 = 100uH				(f) F : Lead Free		

2. CONFIGURATION & DIMENSIONS :

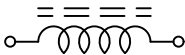


Marking :
"●" : Start

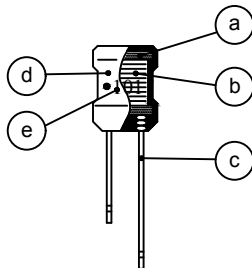
Unit:m/m

AØ	B	C	D	E	F	WØ
5.00±0.5	6.50 ^{+1.0} _{-0.5}	20.00±5.0	15.00±5.0	2.50 Max.	2.00±0.50	0.50 Ref.

3. SCHEMATIC :



4. MATERIALS :

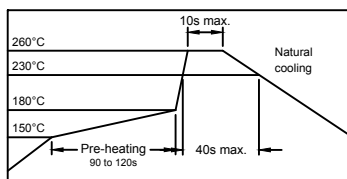


- (a) CORE
- (b) WIRE
- (c) LEAD
- (d) TUBE
- (e) INK

5. GENERAL SPECIFICATION :

- a) TEMP. RISE : 20°C MAX. AT RATED CURRENT
- b) STORAGE TEMP.: -40°C TO +125°C
- c) OPERATING TEMP. : -40°C TO +125°C

RECOMMENDED SOLDERING CONDITIONS
REFLOW SOLDERINGS



RoHS Compliant

NOTE : Specifications subject to change without notice. Please check our website for latest information.

15.09.2016

 SUPERWORLD ELECTRONICS (S) PTE LTD

PG. 1

6. ELECTRICAL CHARACTERISTICS :

Part No.	Inductance (μH)	Q Min.	Test Frequency (Hz)	SRF (MHz) Min.	RDC (Ω) Max.	IDC (mA) Max.
RCB05061R0MZF	1.0 \pm 20%	60	1V/7.96M	105.0	0.10	1030
RCB05061R2MZF	1.2 \pm 20%	60	1V/7.96M	90.0	0.15	980
RCB05061R5MZF	1.5 \pm 20%	60	1V/7.96M	75.0	0.20	920
RCB05061R8MZF	1.8 \pm 20%	60	1V/7.96M	70.0	0.22	880
RCB05062R2MZF	2.2 \pm 20%	60	1V/7.96M	65.0	0.24	830
RCB05062R7MZF	2.7 \pm 20%	60	1V/7.96M	60.0	0.27	790
RCB05063R3MZF	3.3 \pm 20%	60	1V/7.96M	50.0	0.30	750
RCB05063R9MZF	3.9 \pm 20%	60	1V/7.96M	45.0	0.30	720
RCB05064R7MZF	4.7 \pm 20%	60	1V/7.96M	40.0	0.35	670
RCB05065R6KZF	5.6 \pm 10%	60	1V/7.96M	35.0	0.35	640
RCB05066R8KZF	6.8 \pm 10%	60	1V/7.96M	30.0	0.40	620
RCB05068R2KZF	8.2 \pm 10%	60	1V/7.96M	25.0	0.40	590
RCB0506100KZF	10.0 \pm 10%	60	1V/2.52M	20.0	0.45	550
RCB0506120KZF	12.0 \pm 10%	60	1V/2.52M	15.0	0.50	530
RCB0506150KZF	15.0 \pm 10%	60	1V/2.52M	13.0	0.55	500
RCB0506180KZF	18.0 \pm 10%	60	1V/2.52M	11.0	0.60	480
RCB0506220KZF	22.0 \pm 10%	60	1V/2.52M	10.0	0.65	460
RCB0506270KZF	27.0 \pm 10%	50	1V/2.52M	9.0	0.75	430
RCB0506330KZF	33.0 \pm 10%	50	1V/2.52M	8.0	0.85	410
RCB0506390KZF	39.0 \pm 10%	50	1V/2.52M	7.5	0.90	390
RCB0506470KZF	47.0 \pm 10%	50	1V/2.52M	7.0	1.00	370
RCB0506560KZF	56.0 \pm 10%	50	1V/2.52M	6.5	1.20	350
RCB0506680KZF	68.0 \pm 10%	50	1V/2.52M	6.0	1.30	340
RCB0506820KZF	82.0 \pm 10%	50	1V/2.52M	5.5	1.50	320
RCB0506101KZF	100.0 \pm 10%	50	1V/0.796M	5.0	1.70	305
RCB0506121KZF	120.0 \pm 10%	50	1V/0.796M	4.8	1.90	290
RCB0506151KZF	150.0 \pm 10%	50	1V/0.796M	4.4	2.10	275
RCB0506181KZF	180.0 \pm 10%	50	1V/0.796M	4.2	2.30	235
RCB0506221KZF	220.0 \pm 10%	45	1V/0.796M	3.8	2.50	200
RCB0506271KZF	270.0 \pm 10%	45	1V/0.796M	3.6	2.75	180
RCB0506331KZF	330.0 \pm 10%	45	1V/0.796M	3.3	4.68	165
RCB0506391KZF	390.0 \pm 10%	45	1V/0.796M	3.0	6.00	150
RCB0506471KZF	470.0 \pm 10%	55	1V/0.796M	2.8	6.50	140
RCB0506561KZF	560.0 \pm 10%	55	1V/0.796M	2.4	8.50	135
RCB0506681KZF	680.0 \pm 10%	55	1V/0.796M	2.2	9.00	125
RCB0506821KZF	820.0 \pm 10%	55	1V/0.796M	2.0	9.60	120
RCB0506102KZF	1000.0 \pm 10%	55	1V/0.252M	1.8	11.50	100



RoHS Compliant

NOTE : Specifications subject to change without notice. Please check our website for latest information.

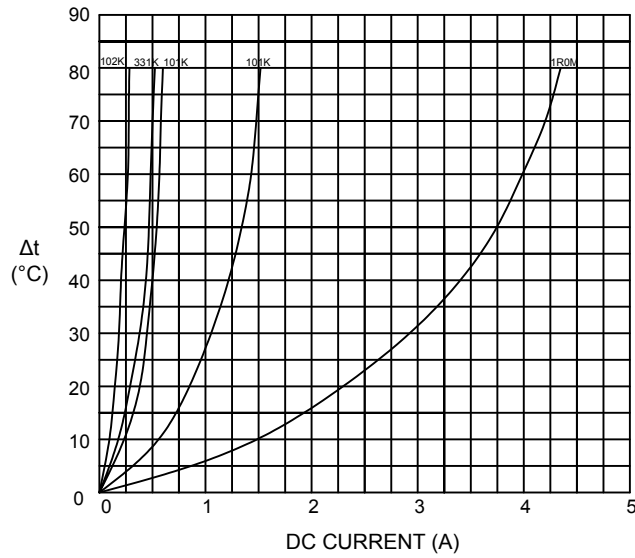
15.09.2016



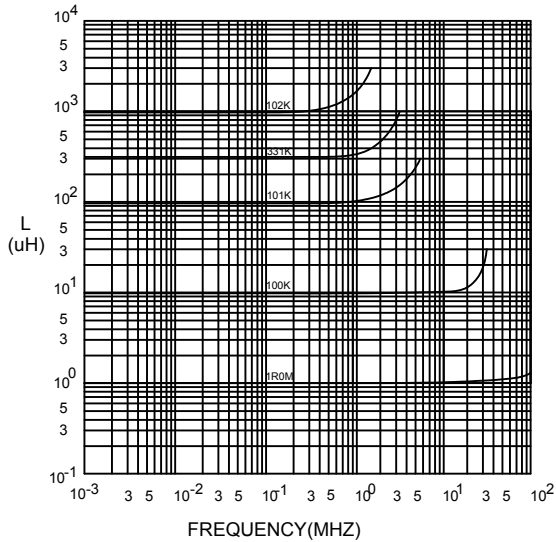
SUPERWORLD ELECTRONICS (S) PTE LTD

7. CHARACTERISTICS CURVES :

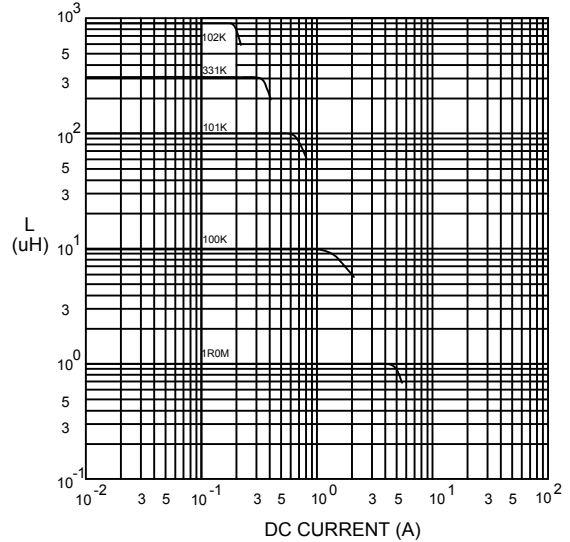
@ TEMP. RISE VS. DC SUPERPOSITION RESPONSE CURVE



@ INDUCTANCE VS. FREQUENCY RESPONSE CURVE



@ INDUCTANCE VS. DC SUPERPOSITION RESPONSE CURVE



NOTE : Specifications subject to change without notice. Please check our website for latest information.



RoHS Compliant

15.09.2016



SUPERWORLD ELECTRONICS (S) PTE LTD

8. PACKAGING INFORMATION :

CODE	INNER PACKAGE	INNER PACKAGE Q'TY
F	TRAY	800 PCS



RoHS Compliant

NOTE : Specifications subject to change without notice. Please check our website for latest information.

15.09.2016



SUPERWORLD ELECTRONICS (S) PTE LTD