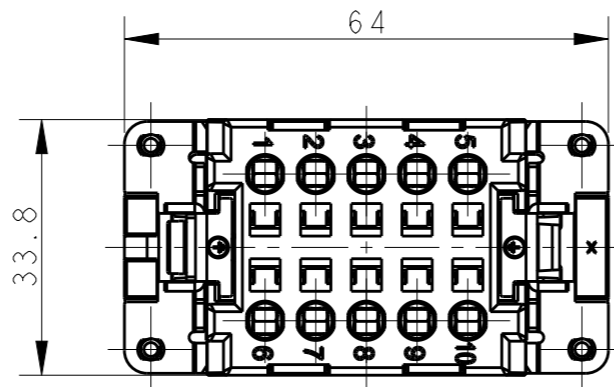
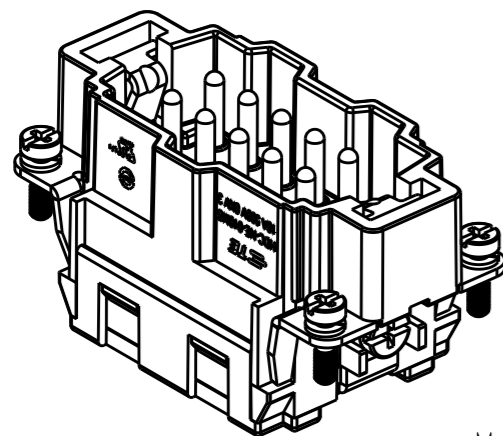


THIS DRAWING IS UNPUBLISHED. RELEASED FOR PUBLICATION 20
 © COPYRIGHT 20 BY - ALL RIGHTS RESERVED.

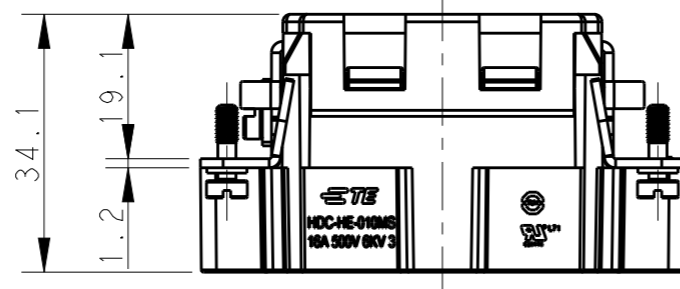
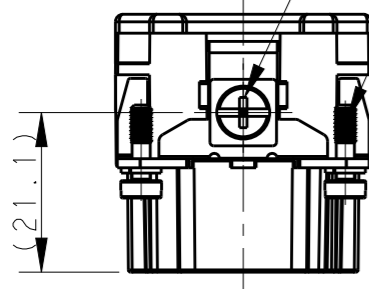
REVISIONS

| P | LTR | DESCRIPTION | DATE | DWN | APVD |
|----|-----|-----------------|-----------|-----|------|
| A | | INITIAL RELEASE | 08APR2015 | GY | CW |
| B | | ECR-15-013759 | 29SEP2015 | DW | CW |
| B1 | | ECR-16-009892 | 13JUL2016 | RL | CW |



M4 SCREW, RECOMMENDED TIGHTENING TORQUE 1.2Nm
 M4螺丝, 推荐扭力矩为1.2Nm

4X M3 SCREW RECOMMENDED TIGHTENING TORQUE 0.5Nm
 4 X M3螺丝, 推荐扭力矩为 0.5Nm

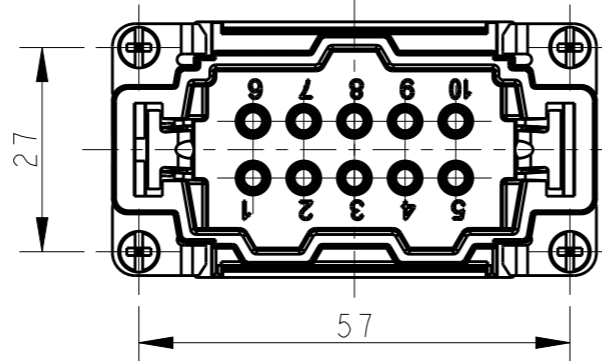
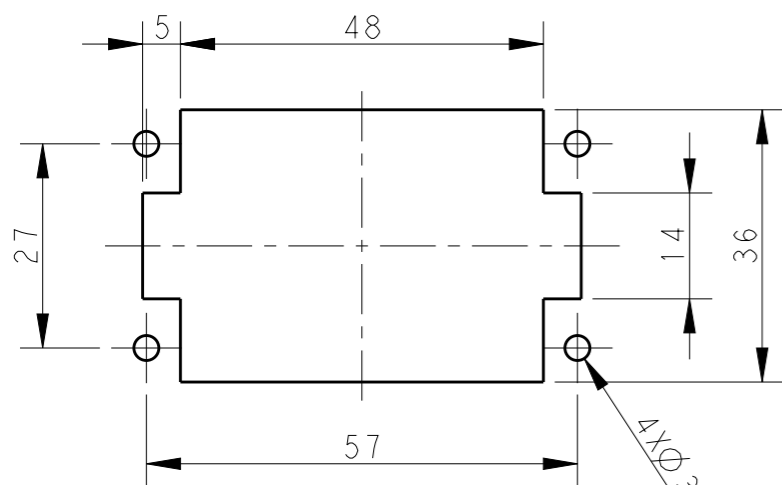


NOTES:

1. TECHNICAL CHARACTERISTICS:
 INSULATION MATERIAL: PC
 RATED VOLTAGE: 500V
 RATED CURRENT: 16A
 INSULATION RESISTANCE: $\geq 400M\Omega$
 RATED IMPULSE VOLTAGE: 6KV
 POLLUTION DEGREE: 3
 FLAMMABILITY: UL94V-0
 MATING CYCLES: 500 CYCLES
 WIRE RANGE: $0.5mm^2 \sim 2.5mm^2$ (AWG20-AWG14)
 CONTACT FINISH: SILVER PLATED
 CONTACT TYPE: SPRING CLAMP


注释:

1. 技术参数:
 绝缘材料: PC
 额定电压: 500V
 额定电流: 16A
 绝缘电阻: $\geq 400M\Omega$
 脉冲电压: 6KV
 污染等级: 3
 阻燃等级: UL94V-0
 插拔次数: 500 次
 接线范围: $0.5mm^2 \sim 2.5mm^2$ (AWG20-AWG14)
 端子表面处理: 镀银
 接线类型: 弹片压接



PANEL CUT OUT FOR INSERTS FOR USE WITHOUT HOODS/HOUSING
 不使用防护外壳时芯件的安装开孔图

| | | | | |
|-------------------|------------------------|--|--|-----------------|
| T2040103101-001 | HE-010-MS | HE-010 MALE INSERT, WITH STAINLESS STEEL SCREW, SPRING CLAMP HE-010公插, 带不锈钢螺丝, 弹片 | STAINLESS STEEL | STAINLESS STEEL |
| T2040103101-000 | HE-010-MS | HE-010 MALE INSERT, SPRING CLAMP HE-010公插, 弹片 | STEEL | STEEL |
| PART NUMBER 料号 | PART DESCRIPTION 描述 | FIXING SCREW MAT'L 压线螺丝材质 | GROUND CONTACT SCREW MAT'L 接地连接螺丝材质 | |

| | | | | | | |
|---|--------|--------------------------------|---|--------------------|------------------------------|---------------|
| THIS DRAWING IS A CONTROLLED DOCUMENT. | | DWN 08APR2015 Gino.Yao |  TE Connectivity | | | |
| DIMENSIONS: mm | | CHK 08APR2015 Chris.Wang | | | NAME HE-010-MS | |
| TOLERANCES UNLESS OTHERWISE SPECIFIED: | | APVD 08APR2015 Xiang.Xu | | | | |
| 0 PLC ±- 1 PLC ±- 2 PLC ±- 3 PLC ±- 4 PLC ±- ANGLES ±- | | PRODUCT SPEC 108-137044 | | | | |
| MATERIAL | FINISH | APPLICATION SPEC 114-137044 | SIZE A3 | CAGE CODE 00779 | DRAWING NO T2040103101000 | RESTRICTED TO |
| | | WEIGHT | SCALE 1:1 | | SHEET 1 OF 1 | REV B1 |
| | | Customer Drawing | | | | |