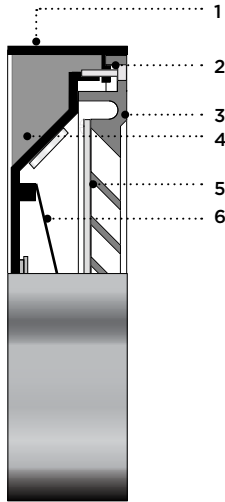


TYPE: _____ QUANTITY: _____ PROJECT: _____

CATALOG NUMBER:

FIXTURE WATTAGE VOLTAGE FINISH OPTION OPTION OPTION OPTION



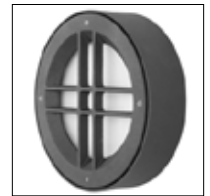
- 1- Cast aluminum enclosed housing.
- 2- Silicone gasket with memory retention.
- 3- Cast aluminum louver front cover.
- 4- Heat dissipating fins with removable LED platform.
- 5- Frosted glass inner lens.
- 6- Bright aluminum reflector.

All stainless steel hardware.

NT605



NT625



NT640



MATERIALS

Nautilux is made of corrosion resistant 356 aluminum alloy with a copper (CU) content of less than 0.1%.

LED platform is easily removable and secured with a heat dissipating plate for optimal light performance.

LED light engine is positioned to increase down lighting while maintaining a general diffused uniform light.

ELECTRICAL

LED

DRIVER Standard driver is 0-10V dimming-ready (dims to 10%) with: 120-277 multi-volt compatibility (50-60Hz), minimum operating temperature of -30°C/-22°F, output over voltage protection, output over current protection, output short circuit protection with auto-recovery, and over temperature protection (110°C).

LED Standard 4000K LED platform included. Optional 3000K and 3500K. Removable modular LED platform.

LIFE

51,000hrs L₇₇B₅₀ (based on IESNA TM-21 Test Method and LM-80 data).
68,000hrs L₇₀B₅₀ (calculated projection from LM-80 data).

FINISH

Five-stage preparation process includes preheating of cast aluminum parts for air extraction. Polyester powder coating is applied through an electrostatic process, and oven cured for long term finish.

MOUNTING

Maximum weight: 8lbs (3.6kg)

Mounts on a standard 4" (102) octagonal electrical box with 3 1/2" (89) C/C mounting holes.

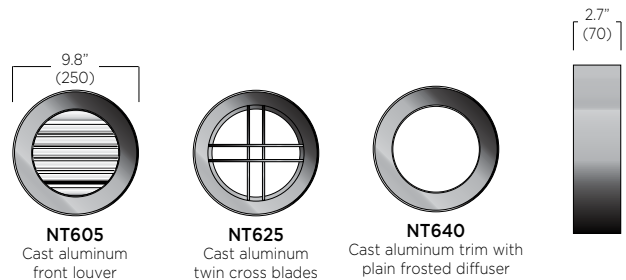
CERTIFICATION

Tested to UL1598 and CSA 22.2 #250. ETL listed wet location.

Photometry tested per IES LM-79-08 / IES LM80 test report.

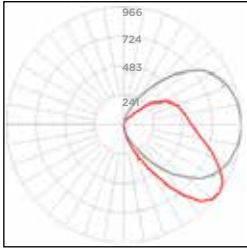
CE certification on request.

Rated IP65.

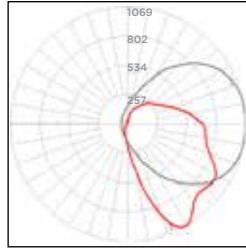


NT605/NT625/NT640 SERIES NAUTILUX - LED

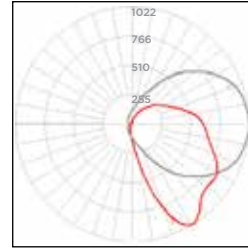
TYPICAL PHOTOMETRY SUMMARY



Descriptive Information
 NT605-L1W30r1
 Total Lms: XXXX Lumens
 Total Input Watts: XX W
 Source: LED
 Efficacy: XXX Lumens/Watt
 BUG: BX-UX-GX
 CCT/CRI: 4000K/80
 Maximum Candela: XXX



Descriptive Information
 NT625-L1W30r1
 Total Lms: XXXX Lumens
 Total Input Watts: XX W
 Source: LED
 Efficacy: XXX Lumens/Watt
 BUG: BX-UX-GX
 CCT/CRI: 4000K/80
 Maximum Candela: XXX



Descriptive Information
 NT640-L1W30r1
 Total Lms: XXXX Lumens
 Total Input Watts: XX W
 Source: LED
 Efficacy: XXX Lumens/Watt
 BUG: BX-UX-GX
 CCT/CRI: 4000K/80
 Maximum Candela: XXX

Please visit our web site www.luminis.com for complete I.E.S. formatted download data.

LUMINAIRE SELECTION

MODEL#	LED LIGHT SELECTION	VOLTAGE ¹	FINISH																
<input type="checkbox"/> NT605 	<table border="1"> <thead> <tr> <th>SUFFIX</th> <th>INPUT WATTS</th> <th>DELIVERED LUMENS</th> <th>CRI</th> <th>CCT K</th> </tr> </thead> <tbody> <tr> <td><input type="checkbox"/> L1W12</td> <td>12W</td> <td>540</td> <td rowspan="3">80</td> <td rowspan="3">4000K</td> </tr> <tr> <td><input type="checkbox"/> L1W18</td> <td>18W</td> <td>810</td> </tr> <tr> <td><input type="checkbox"/> L1W30</td> <td>30W</td> <td>1350</td> </tr> </tbody> </table>	SUFFIX	INPUT WATTS	DELIVERED LUMENS	CRI	CCT K	<input type="checkbox"/> L1W12	12W	540	80	4000K	<input type="checkbox"/> L1W18	18W	810	<input type="checkbox"/> L1W30	30W	1350	<input type="checkbox"/> 120V <input type="checkbox"/> 277V	STANDARD COLORS <input type="checkbox"/> WHT Snow white <input type="checkbox"/> BKT Jet black <input type="checkbox"/> BZT Bronze <input type="checkbox"/> MST Matte silver <input type="checkbox"/> GRT Titanium gray <input type="checkbox"/> DGT Gun metal <input type="checkbox"/> CHT Champagne OPTIONAL COLORS <input type="checkbox"/> CS Custom color <input type="checkbox"/> RAL RAL# color (Refer to color chart)
		SUFFIX	INPUT WATTS	DELIVERED LUMENS	CRI	CCT K													
		<input type="checkbox"/> L1W12	12W	540	80	4000K													
<input type="checkbox"/> L1W18	18W	810																	
<input type="checkbox"/> L1W30	30W	1350																	
<input type="checkbox"/> NT625 																			
<input type="checkbox"/> NT640 																			

OPTIONS

ELECTRICAL

- FS Fuse²
- PH Photocell²

Alternate CCT K LED

- K3 3000K CCT LED
- K35 3500K CCT LED

NOTES

- 1- Luminaires are factory prewired for 120V (if no voltage is specified.) For other voltages, please specify with catalog number, or consult factory.
- 2- Fuse and photocell options are normally installed with poles when specified with Luminis luminaires. (Except for other types of mounting.)

LUMINIS®

LUMINIS | Toll free: 866.586.4647 Fax: 514.683.8872
 260 Labrosse, Pointe-Claire (QC) Canada H9R 5L5

LUMINIS.COM

Luminaires may be altered for design improvement or discontinued without prior notice.