

Customer Information Sheet

DRAWING No.: P25-XX26

SHEET 2 OF 2

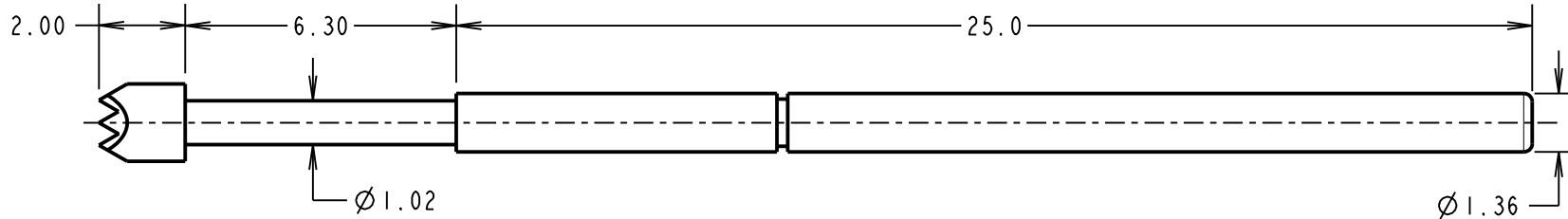
IF IN DOUBT - ASK

©

NOT TO SCALE

THIRD ANGLE PROJECTION

ALL DIMENSIONS IN mm



ORDER CODE:
P25-XX26
PROBE HEAD: _____
VARIANT (SEE BELOW)

NOTES:

1. TO BE USED WITH SLEEVE S25-XX6.
2. SUITABLE FOR A MINIMUM DISTANCE BETWEEN CENTRES OF 2.54mm.

SPECIFICATIONS:

MATERIAL:

PLUNGER:

- P25-3226, P25-1726, P25-4026 = BERYLLIUM COPPER
- P25-0126 = HIGH CARBON STEEL

BARREL:

- P25-3226, P25-1726, P25-4026 = BRASS
- P25-0126 = PHOSPHOR BRONZE

SPRING = STAINLESS STEEL

FINISH:

PLUNGER, BARREL = GOLD OVER NICKEL

SPRING:

- P25-3226, P25-1726, P25-4026 = UNPLATED
- P25-0126 = GOLD OVER NICKEL

ELECTRICAL:

CURRENT RATING = 3A MAX

CONTACT RESISTANCE = 50mΩ MAX

MECHANICAL:

DURABILITY = 100,000 CYCLES MIN

FULL TRAVEL = 6.30mm

SPRING FORCES:

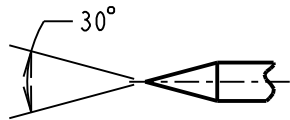
AT FULL TRAVEL = 2.45N ± 0.50N (250g ± 20%)

AT 2/3 TRAVEL = 1.67N ± 0.34N (170g ± 20%)

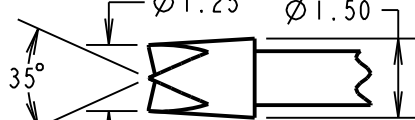
ENVIRONMENTAL:

TEMPERATURE RANGE = -40°C TO +180°C

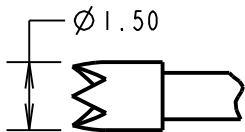
PROBE HEAD VARIANTS



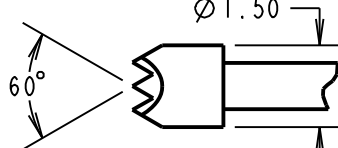
SPEAR HEAD
P25-0126



CROWN HEAD
P25-3226



TULIP HEAD
P25-1726



SERRATED HEAD
P25-4026

SB	6	08.11.17	20842
NAME	ISS.	DATE	C/NOTE
APPROVED: S.BENNETT			
CHECKED: M.PLESTED			
DRAWN: W.J.BOURNE			
CUSTOMER REF.:			
ASSEMBLY DRG:			

HARWIN

www.harwin.com
technical@harwin.com

THIS DRAWING AND ANY INFORMATION OR DESCRIPTIVE MATTER SET OUT HEREON ARE CONFIDENTIAL AND COPYRIGHT PROPERTY OF THE HARWIN GROUP AND MUST NOT BE DISCLOSED, LOANED, COPIED OR USED FOR MANUFACTURING, TENDERING OR FOR ANY OTHER PURPOSE WITHOUT THEIR WRITTEN PERMISSION.

TOLERANCES

- X. = ±1mm
- X.X = ±0.50mm
- X.XX = ±0.10mm
- X.XXX = ±0.01mm
- ANGLES = ±5°
- UNLESS STATED

MATERIAL:

SEE ABOVE

FINISH: SEE ABOVE

S/AREA:

mm²

TITLE:

2.54mm MIN. CENTRE
TWO-PIECE SPRING PROBE

DRAWING NUMBER:

P25-XX26

SHT
2 OF 2