

SAW Filter 280.0MHz
Part No: MP03532

Model: TB0703A
Rev No: 1

A. MAXIMUM RATING:

1. Operating Temperature: -40°C ~ +85°C
2. Storage Temperature: -40°C ~ +85°C

B. CHARACTERISTICS:

Ambient Temperature: 25°C

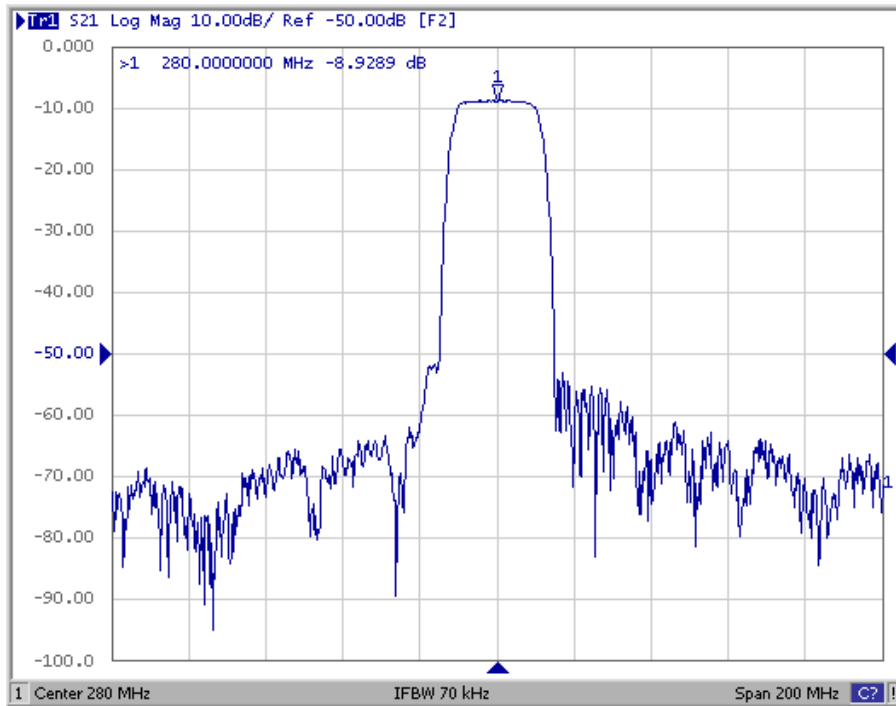
Characteristics	Value			Note
	Min.	Typ.	Max.	
Center frequency Fc MHz	-	280	-	-
Minimum Insertion loss IL dB	-	8.8	11.0	-
1.0dB Bandwidth MHz	15.0	19.8	-	-
40dB Bandwidth	-	29.5	31.0	
Amplitude Ripple (Fc ± 7.5MHz) dB	-	0.4	1.0	-
Amplitude Ripple (Fc ± 7.5MHz ~ Fc ± 8.5MHz) dB	-	0.7	2.0	-
Group-delay Ripple (Fc ± 7.5MHz) nsec	-	24	50	-
Attenuation (Reference level from Minimum insertion loss)				
Fc ± 15MHz ~ Fc ± 17MHz dB	10	40	-	-
Fc ± 17MHz ~ Fc ± 100MHz dB	40	45	-	-

SAW Filter 280.0MHz
Part No: MP03532

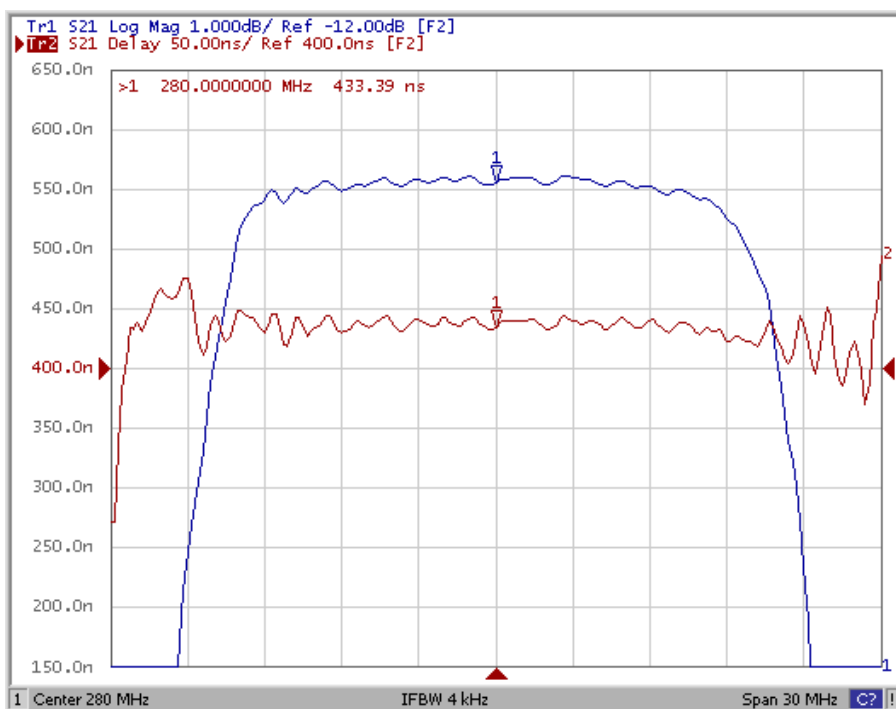
Model: TB0703A
Rev No: 1

C. FREQUENCY CHARACTERISTICS:

1. S21 Response (span 200MHz)



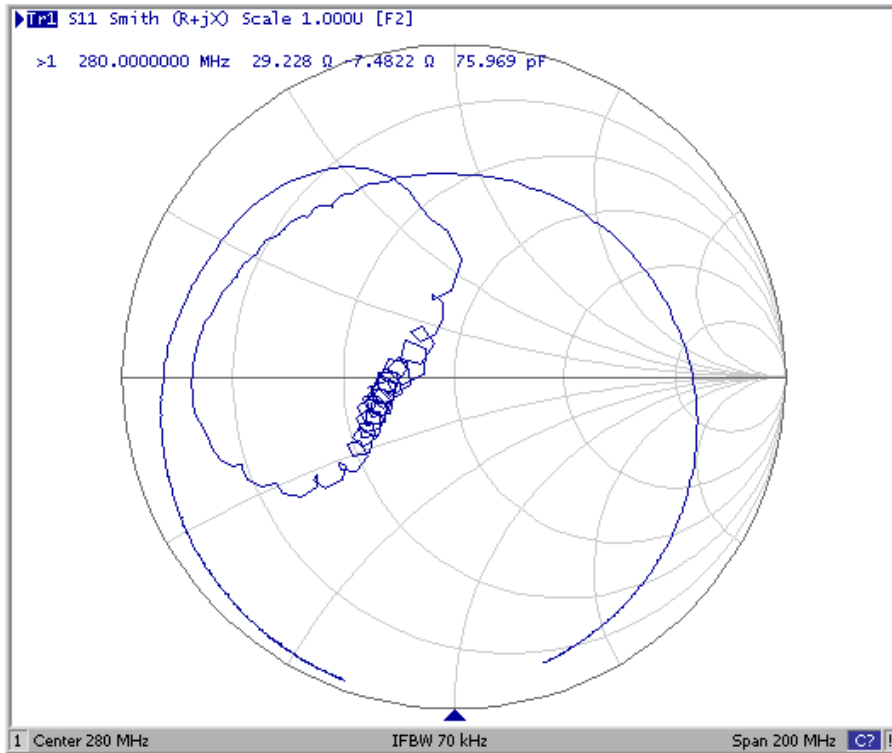
2. Passband of Response (span: 30MHz)



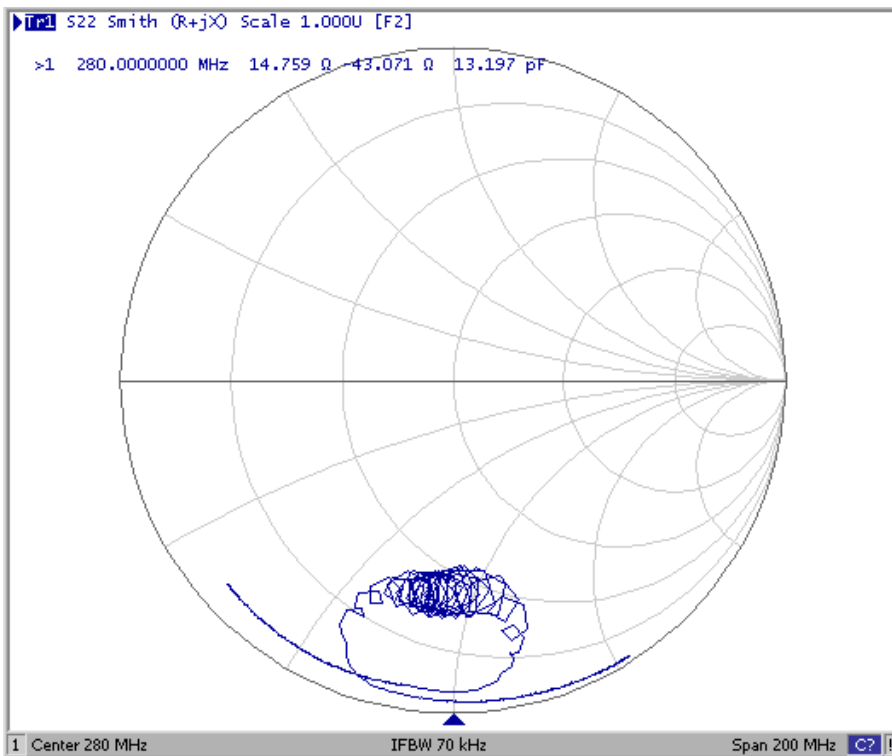
SAW Filter 280.0MHz
Part No: MP03532

Model: TB0703A
Rev No: 1

3. S11 Smith Chart (span 200MHz)



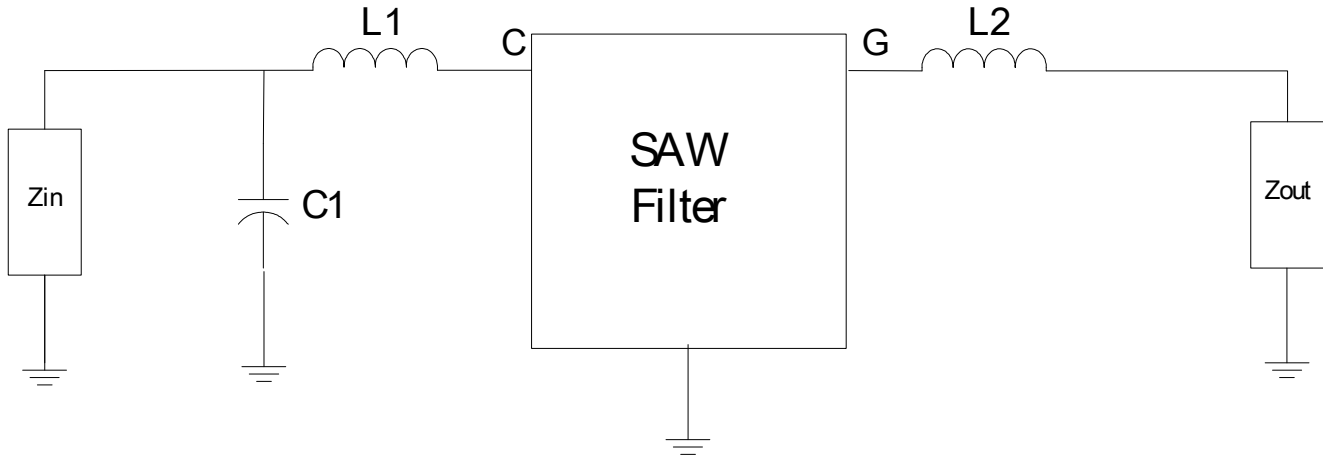
4. S22 Smith Chart (span 200MHz)



SAW Filter 280.0MHz
Part No: MP03532

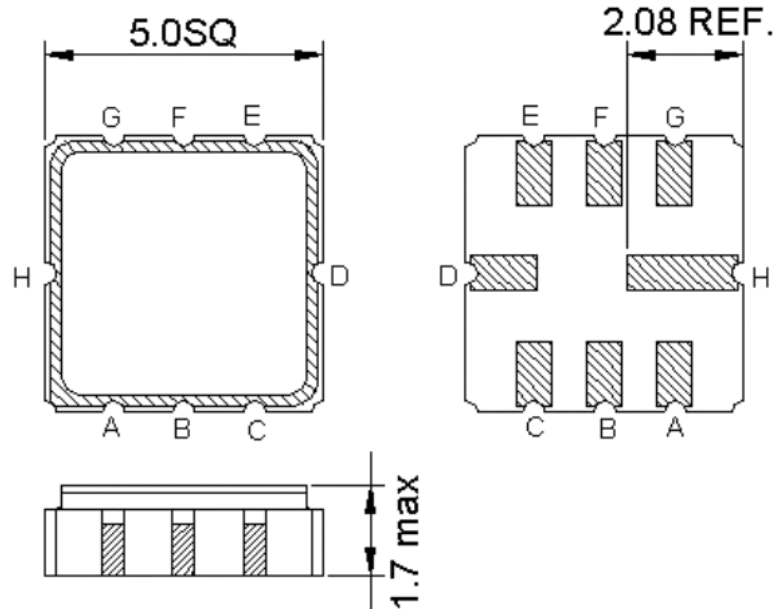
Model: TB0703A
Rev No: 1

D. TEST CIRCUIT:



Z_{IN} and Z_{OUT} are 50Ω , $L1 = 47nH$, $C1 = 10p$, $L2 = 8.2nH$

E. OUTLINE DRAWING:



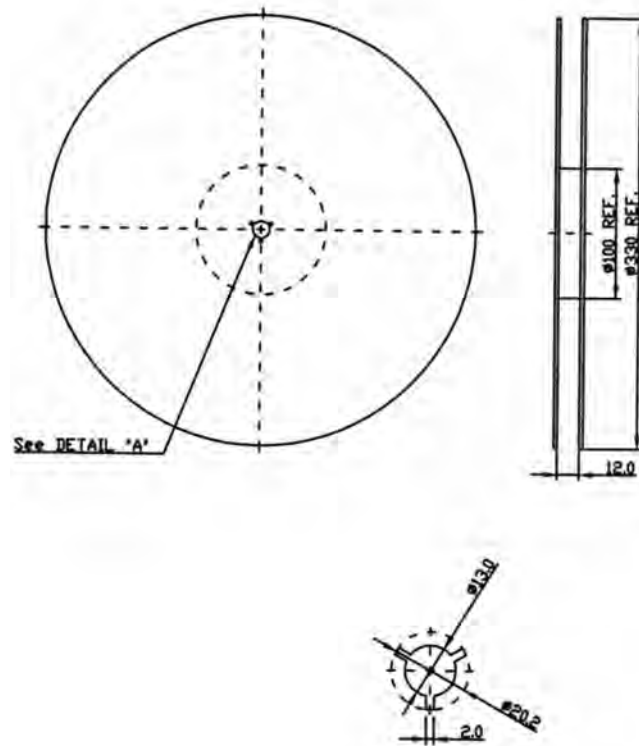
- C: RF input
 - G: RF output
 - H, D: Case Ground
 - A, B, E, F: Ground
- Unit: mm

SAW Filter 280.0MHz
Part No: MP03532

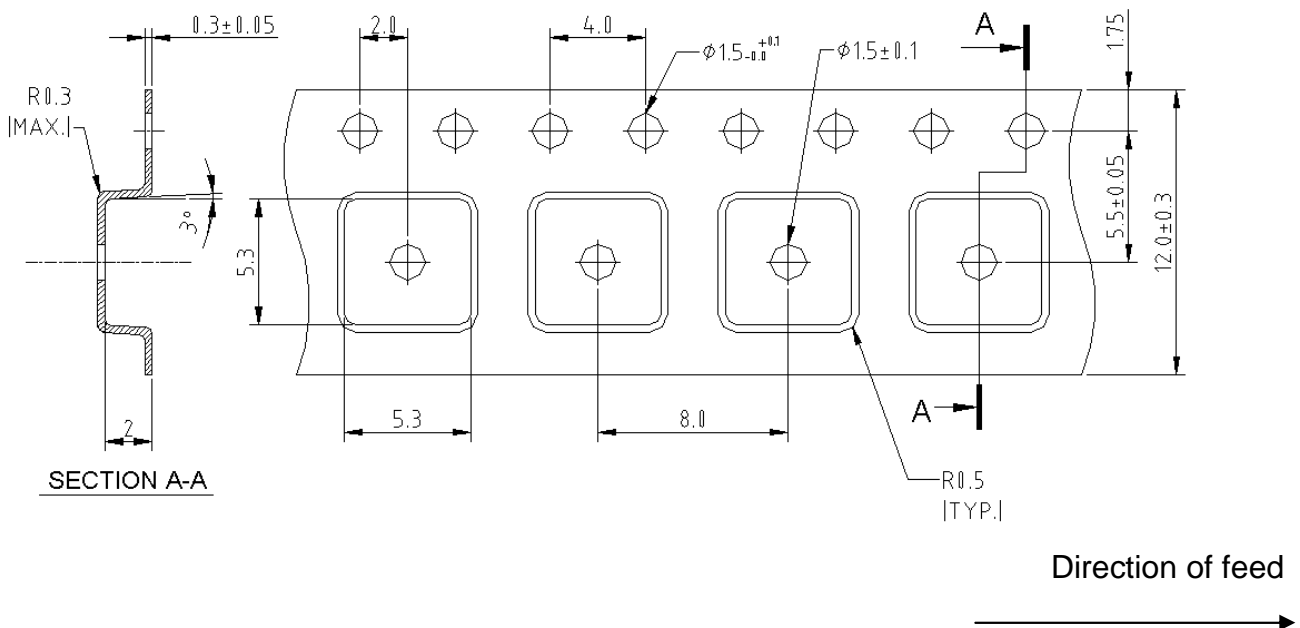
Model: TB0703A
Rev No: 1

F. PACKING:

1. REEL DIMENSION



2. TAPE DIMENSION



SAW Filter 280.0MHz
Part No: MP03532

Model: TB0703A
Rev No: 1

G. RECOMMENDED REFLOW PROFILE:

