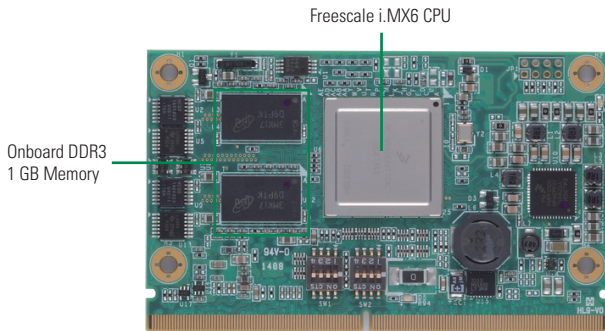


SCM120

Freescall i.MX6 SMARC SoM



Features

- Ultra Low Power Consumption Cortex™-A9
- High flexibility SMARC v1.0 Compliant Design
- 2 CAN 2.0B
- 24-bit TTL Signal
- LVDS/HDMI 1080P
- 10/100/1000 Mbps Ethernet
- Open GL ES2.0
- Linux3.0.35/Android4.3
- I2S Audio

System

Processor	Freescall i.MX6 Series SoC with Quad/DualLite ARM Cortex™-A9 CPU 800 MHz
System Memory	On-board DDR3 1GB
OS	Linux kernel 3.0.35, Android 4.3
Storage	eMMC flash 4 GB, SDIO interface, SATA interface (Only Quad Support)
RTC	Battery on the Baseboard is required
Power Requirement	+3V~+5.25V
Size	82 x 50 mm
Board Thickness	1.2 mm ± 0.1mm
Operating Temperature	-40°C ~ +85°C (Industrial) 0°C ~ +60°C (Consumer)
Operation Humidity	10% ~ 95%, non-condensing

I/O

Graphics	1 24-bit TTL Signal 1 Dual channel 24-bit LVDS 1 HDMI 1080P
Ethernet	1 10/100/1000 Mbps Ethernet MAC integrated in iMX-6 and PHY as Atheros AR8031 Compatible with IEEE std 802.3 Supports IEEE std 1588-compatible hardware timestamp
Audio	I2S SGLT5000 Codec for Mic-in/Headphone on Baseboard
COM	4 UARTs with TX/RX/RTS/CTS 1 Console port
USB	2 USB 2.0 ports (1 OTG client and 1 Host)
I ² C	4 I ² C Interface
SPI	2 SPI (2 channel)
CAN	2 ports as 2.0B protocol-compatible Controller Area Network (CAN) interfaces
GPIO	8 button-detect
PCIe	1 PCIe x1 lane
Camera	1 MIPI v1.0, 2x Lane 1 PCAM 8bit

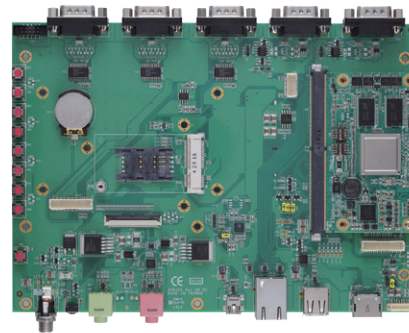
Ordering Information

Standard

SCM120-DualLite-I	SCM120 with Freescall iMX6 DualLite 800 MHz (Industrial) SoC, 1 GB Memory, 4 GB eMMC, 10/100/1000 Mbps Ethernet, Audio, CAN
SCM120-Quad-I	SCM120 with Freescall iMX6 Quad 800MHz (Industrial) SoC, 1 GB Memory, 4 GB eMMC, 10/100/1000 Mbps Ethernet, Audio, CAN,SATA

Optional

SCM120-120-EVK	Evaluation Kit Board
SCM120-Quad-V	SCM120 with Freescall iMX6 Quad 1.2GHz (Consumer) SoC, 1 GB Memory, 4 GB eMMC, 10/100/1000 Mbps Ethernet, Audio, CAN,SATA



▲ SCM120-120-EVK