

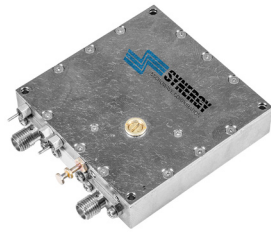
# PHASE LOCKED DRO OSCILLATOR

## CONNECTORIZED MODEL: KSFL0D12800-12-1280

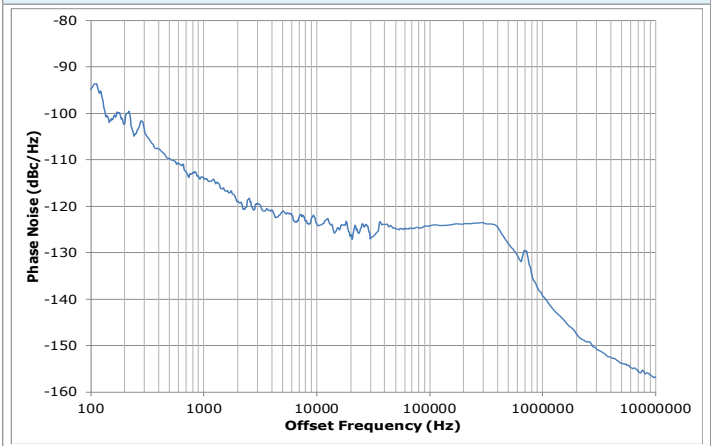
**12.8 GHz**

**FEATURES:**

- ▶ Exceptional Phase Noise
- ▶ Ku Band Source
- ▶ Internal Regulation
- ▶ Small Packages



Phase Noise

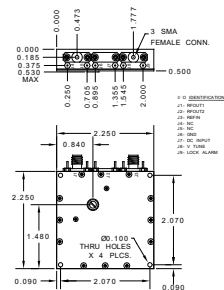


**SPECIFICATION**

Frequency (Fo)	12.8 GHz	
Output Power	≥ +10 dBm	
Reference Input Frequency	1280 MHz	
Reference Input Level	+9 to +13 dBm	
Supply Voltage	Vcc (Vdc)	Icc (mA Max.)
	+12	500
Harmonics (2 *Fo)	27 dB (Min.)	
Sub-Harmonic (3 *Fo)	37 dB (Min.)	
Output Spurious	75 dB (Min.)	
Reference Sideband <sup>1</sup>	70 dB (Min.)	
Output Load Impedance	50 Ohms (Nom.)	
Typical Phase Noise	Offset	Phase Noise
	@ 1 kHz	-114 dBc/Hz
	@ 10 kHz	-122 dBc/Hz
	@ 100 kHz	-123 dBc/Hz
	@ 1 MHz	-138 dBc/Hz
	@ 10 MHz	-158 dBc/Hz
Lock Detect Indicator	CMOS High (Lock), CMOS Low (Lock)	
Operating Temperature Range	-20 to +50 °C	
Storage Temperature Range	-40 to +85 °C	

<sup>1</sup> Reference sidebands are measured at 12.8 GHz ±1.28 GHz.

Package #	405-1
-----------	-------

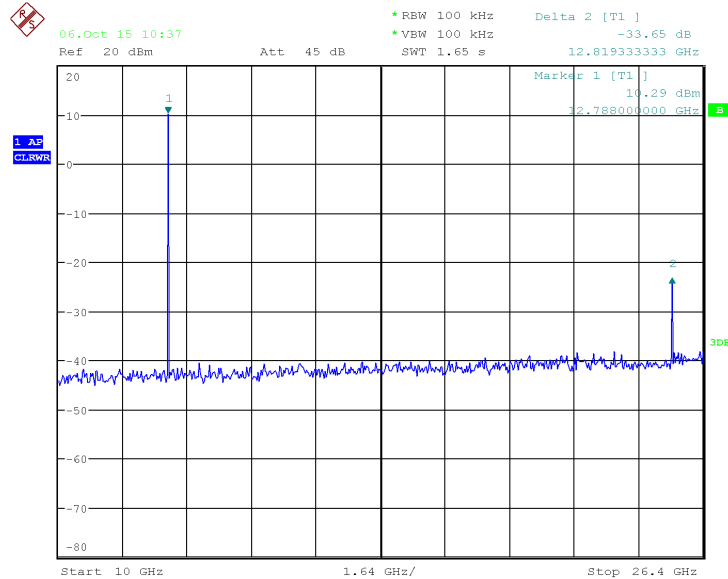


# PHASE LOCKED DRO OSCILLATOR

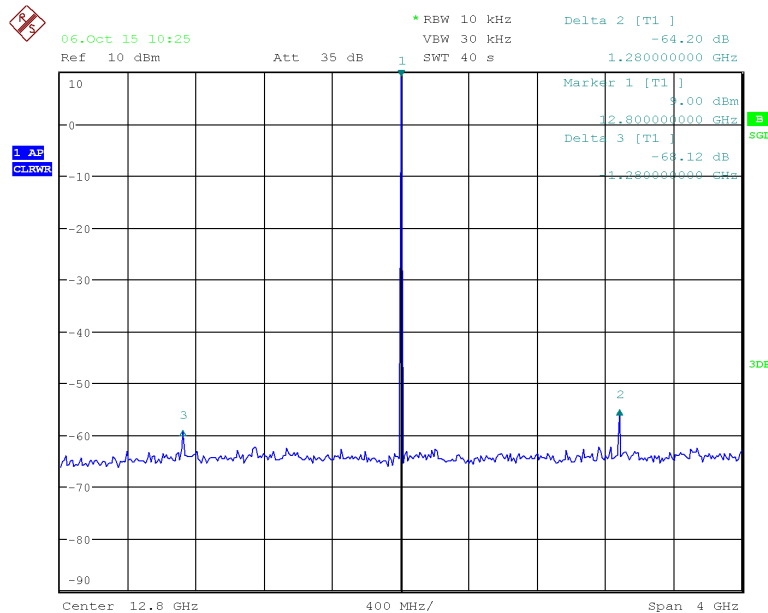
## CONNECTORIZED MODEL: KSFL0D12800-12-1280

12.8 GHz

### HARMONIC SUPPRESSION



### REFERENCE SIDEBAND SUPPRESSION



PERFORMANCE PLOTS