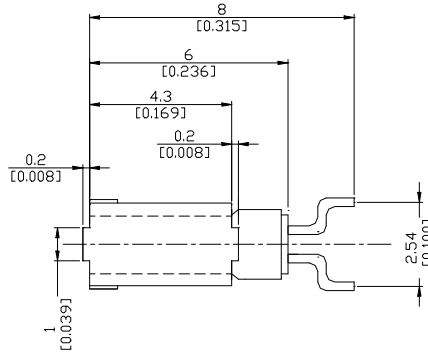
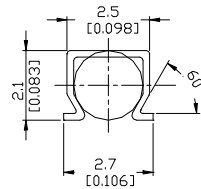


PACKAGE DIMENSIONS

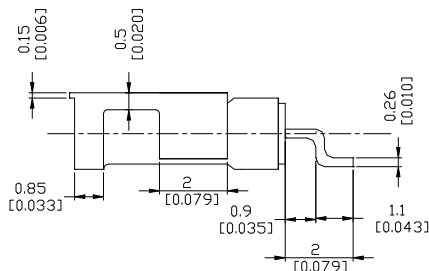
TOP VIEW



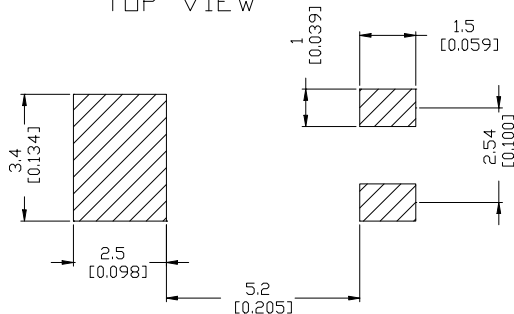
FRONT VIEW



SIDE VIEW



RECOMMENDED LAND PATTERN TOP VIEW



| REVISIONS |                 |           |          |
|-----------|-----------------|-----------|----------|
| LTR       |                 | DATE      | APPROVED |
| A         | INITIAL RELEASE | 16 JUL 07 |          |

SPECIFICATIONS

NOMINAL FREQUENCY: 32.768 KHZ  
 FREQUENCY TOLERANCE: ±20 PPM MAXIMUM  
 TURNOVER TEMPERATURE: +25°C ±5°C  
 TEMPERATURE CHARACTERISTIC, K (NOTE 1): -0.035 PPM/°C<sup>2</sup> (TYPICAL)  
 QUALITY FACTOR: 60,000 (TYPICAL)  
 NOMINAL LOAD CAPACITANCE: 12.5 pF  
 EQUIVALENT SERIES RESISTANCE: 65K OHMS MAXIMUM  
 DRIVE LEVEL: 1 uW MAXIMUM  
 MOTIONAL CAPACITANCE: 2.1pF  
 SHUNT CAPACITANCE: 0.9 pF TYPICAL  
 CAPACITANCE RATIO: 460 (TYPICAL)  
 AGING: ±3 PPM MAXIMUM FIRST YEAR  
 INSULATION RESISTANCE: 500 M OHMS MINIMUM  
 OPERATING TEMPERATURE RANGE: -40°C TO +85°C  
 STORAGE TEMPERATURE RANGE: -55°C TO +125°C  
 PACKAGE: 2mm x 6.5mm CYLINDRICAL METAL CAN WITH FORMED LEADS

SHOCK RESISTANCE: 3000g x 0.3ms x 1/2 SINEWAVE IN EACH OF THREE AXES

PACKAGING: 16mm TAPING, 8mm PITCH, 3000 UNITS PER REEL

NOTE 1: FREQUENCY DEVIATION AT TEMPERATURE T IS GIVEN AS:  $\Delta f/f = k(T_0 - T)^2$ , WHERE K IS PARABOLIC CURVE CONSTANT

|   |   |                 |
|---|---|-----------------|
| <br>ALL DIMENSIONS ARE IN mm/inch<br>UNLESS OTHERWISE SPECIFIED | DRAWING TITLE:  | ROHS COMPLIANT  |
|   | <b>TUNING FORK CRYSTAL UNIT<br/>                 2x6mm SMD LEAD FORM TYPE<br/>                 WITH CLIP REFLOW COMPATIBLE<br/>                 32.768 KHZ, ±20 PPM</b> |                 |
|   | DRAWING NUMBER: <b>R26-32.768-12.5-X-CLIP-TR-NS1</b>  |                 |
|   | DRAWN BY:<br>CHECKED BY: WM<br>APPROVED BY:   |                 |
| SCALE: 1  | SHEET 1 OF 1  | DATE: 16 APR 08 |

NOTE: THIS DRAWING IS A SALES DOCUMENT FOR REFERENCE ONLY. OTHER OPTIONS ARE AVAILABLE. PLEASE CONSULT RALTRON.

