

P/N	INTERFACE	FIGURE
-1SF	FULL DETENT	1
-2SF	LIMITED DETENT	1
-3SF	SMOOTH BORE	1
-4SF	CATCHERS MITT	2

REVISIONS			
REV	DESCRIPTION	DATE	BY
C	ECO 11367	03.14.00	DKN
D	ECO 11728	06/27/00	IMG
E	ECO 26075 (CHG DWG FORMAT)	08.14.12	DKN

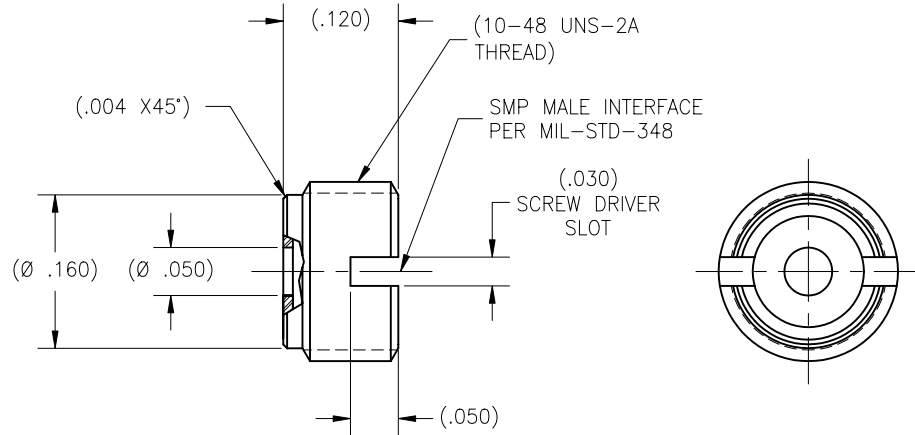


FIGURE 1

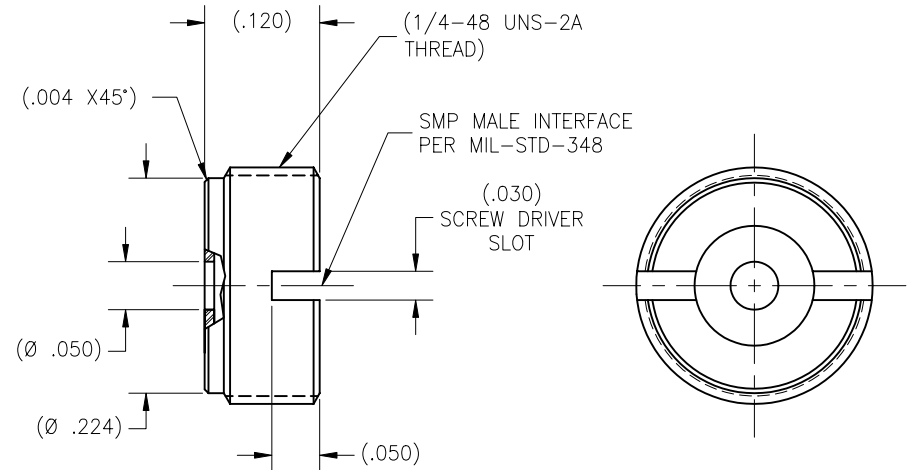


FIGURE 2

MATERIAL:

Body:
303 sst per ASTM A-582.

MECHANICAL:

Mating Characteristics:
Interface per Mil-Std-348.
Force To Engage & Disengage:
Engage:
Full detent: 15.0 lbs max
Limited detent: 10.0 max
Smooth bore/Catchers mitt: 2.0 lbs max
Disengage:
Full detent: 5.0 lbs min
Limited detent: 2.0 lbs min
Smooth bore/Catchers mitt: .50 lbs min
Connector Durability:
Depend on detent

ENVIRONMENTAL:

Temperature Range: -65°C to +165°C.
Thermal Shock:
Mil-Std-202, Method 107, Test Cond. B.
Moisture Resistance:
Mil-Std-202, Method 106, except step 7b shall be omitted.
Corrosion:
Mil-Std-202, Method 101, Test Cond. B.
Vibration:
Mil-Std-202, Method 204, Test Cond. D.
Shock:
Mil-Std-202, Method 213, Test Cond. I.

FINISH:

Body:
Passivate per ASTM A-967, Nitric 1.

APPLICABLE CARLISLE IT DOCUMENTS

WORK STD	PROD INST	ASSY INST
NA	NA	NA

NOTICE

THIS DRAWING EMBODIES A CONFIDENTIAL PROPRIETARY DESIGN ORIGINATED BY CARLISLE INTERCONNECT TECHNOLOGIES AND ALL DESIGN, MANUFACTURING, REPRODUCTION, USE AND SALE RIGHTS REGARDING THE SAME ARE EXPRESSLY RESERVED. IT IS SUBMITTED UNDER A CONFIDENTIAL RELATIONSHIP FOR A SPECIFIED PURPOSE AND THE RECIPIENT AGREES BY ACCEPTING THIS DRAWING NOT TO SUPPLY OR DISCLOSE ANY INFORMATION REGARDING IT TO ANY UNAUTHORIZED PERSON TO INCORPORATE IN OTHER PROJECTS ANY SPECIAL FEATURE PECULIAR TO THIS DESIGN. ALL PATENT RIGHTS HERETO ARE EXPRESSLY RESERVED BY CARLISLE INTERCONNECT TECHNOLOGIES, CERRITOS, CA 90703

TOLERANCES AND NOTES EXCEPT AS NOTED

- DIMENSIONS ARE IN INCHES.
LINEAR .XX ±.015 ANGLUAR ± 1/2°
FRACTION ± 1/32
- MACHINE FINISH: $\sqrt{32}$ RMS
 - BREAK ALL SHARP EDGES .003 MAX.
 - MACHINED FILLETS .005 MAX.
 - MACHINED SURFACES SQUARE TO RESPECTIVE AXIS WITHIN .005 INCHES PER INCH.
 - MACHINED DIAMETERS CONCENTRIC WITHIN .002 T.I.R.
 - DIMENSIONS TO BE MET BEFORE PLATING.
 - CHAMFER ALL THREADS 45°.
 - THREADS PER IN=28
 - REMOVE FRAVED EDGES ON TEFLON.
 - REMOVE ALL BURRS.

MATERIAL		SPECIFICATION		PROCUREMENT	
APPROVAL INITIALS	DATE	CARLISLE Interconnect Technologies Cerritos, CA 90703		TITLE SMP SHROUD, THREAD IN STYLE	
DRAWN BY	02/16/96				
CHECKED BY		SCALE	10/1	DIRECTORY\SUB-DIRECTORY	SHEET 1 OF 1
TEST ENGG		DESIGN ENGG	ATV	07.05.00	CAGE CODE
QUALITY		MFG ENGG			DRAWING NO.
ECO APPRV	HT	08.15.12	C	30990	P676