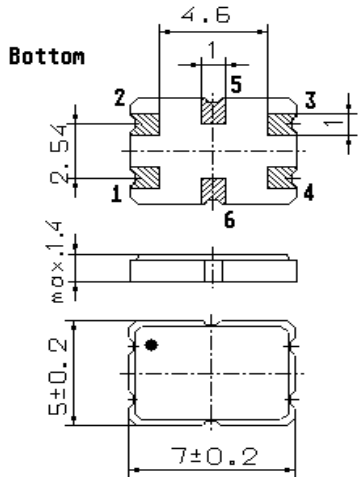


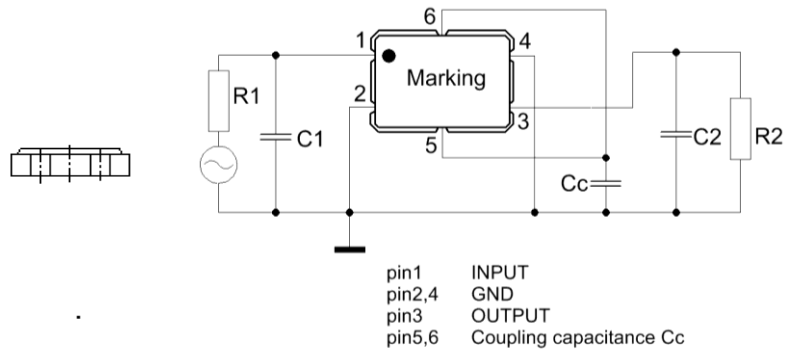
Specification for monolithic crystal filter: **MQF 73.35 - 2500/02**

1. General

1.1. Package:

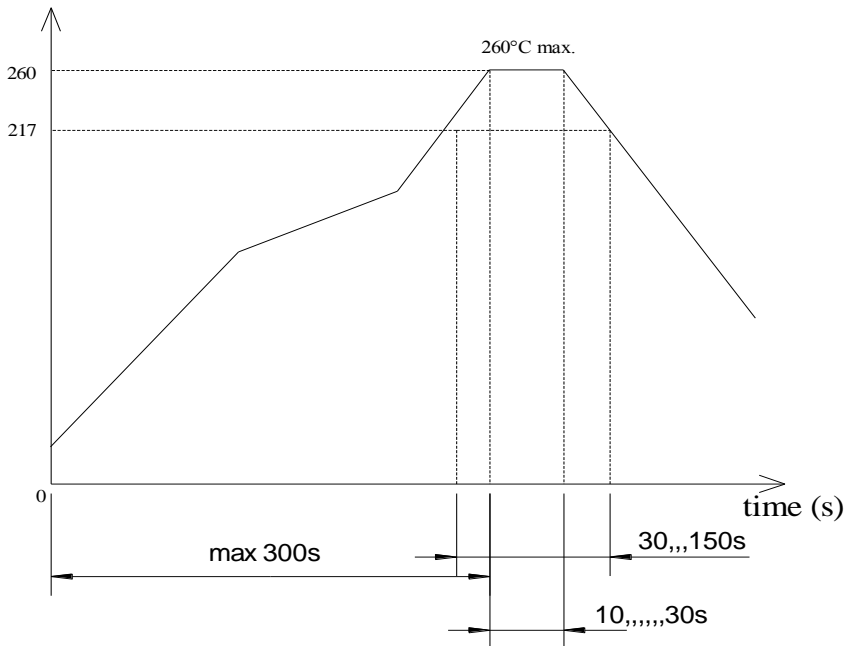


**GS 2**



- |                                   |                   |
|-----------------------------------|-------------------|
| 1.2. Type name:                   | MQF 73.35-2500/02 |
| 1.3. Number of poles:             | 4                 |
| 1.4. Operating temperature range: | -30°C to +85°C    |
| 1.5. Storage temperature range:   | -40°C to +90°C    |

temperature (°C)



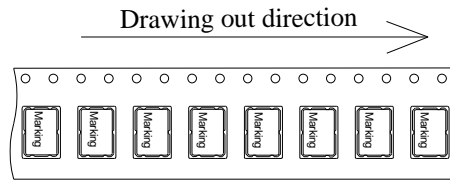
Reflow soldering: three times max.

## 2. Electric values

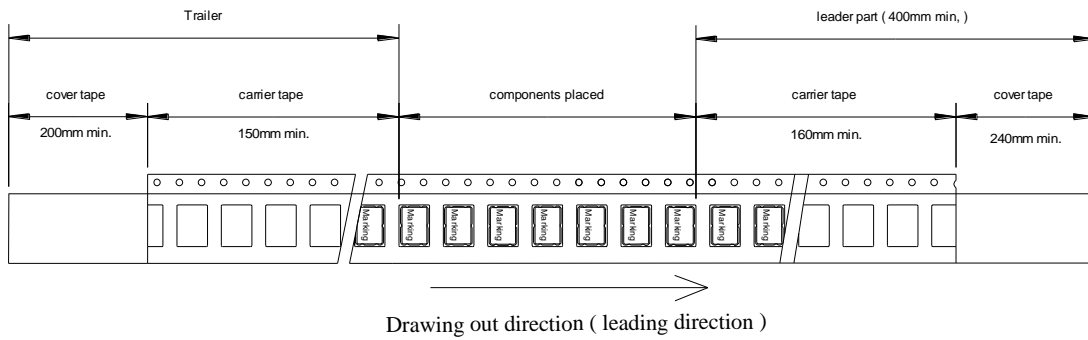
- |   |   |
|---|---|
| 2.1. Nominal centre frequency $f_0$ :   | 73.35 MHz   |
| 2.1.1 Centre frequency $f_c$ at +25°C   | 73.35 MHz $\pm$ 1.5 kHz                                     |
| <b>2.2. Pass band</b>   |   |
| 2.2.1. Bandwidth between 3 dB - frequencies:  | $> f_c \pm 12.5$ kHz  |
| 2.2.2. Ripple in pass band:   | $< 1.0$ dB peak to peak                                     |
| 2.2.3. Insertion loss:<br>( measured on smallest attenuation in pass band )         | $< 6.0$ dB  |
| 2.2.4. Differential group delay at $f_c \pm 9$ kHz                                  | $< 16$ $\mu$ s  |
| <b>2.3. Stop band</b>   |   |
| 2.3.1. $f_c \pm 25$ kHz   | $> 15$ dB   |
| 2.3.2. $f_c \pm 50$ kHz   | $> 40$ dB   |
| 2.3.3. Alternate Attenuation at $f_c \pm 1.0$ MHz                                   | $> 70$ dB (except spurious)                                 |
| <b>2.4. Terminating impedance R//C ( input and output ):</b> 800 $\Omega$ // 1.5 pF |   |
| 2.4.1. Coupling capacitance $C_c$ :   | 4.0 pF  |
| <b>2.5. Maximum input power level</b>   |   |
| working:  | -10 dBm   |
| non-damaged:  | 0 dBm   |
| <b>2.6. Out band Intermodulation ( IP3 <math>&gt; +20</math> dBm )</b>              |   |
| - test tones:   | $f_0 \pm 25$ kHz / $f_0 \pm 50$ kHz                         |
| - Input power level:  | -20 dBm   |
| - 3rd order intermodulation products at $f_0$ :                                     | $> 80$ dB ( down from either of the<br>-20 dBm test tones ) |
| <b>3. Marking:</b>  |   |
|   | • M733525<br>VI yyww  |
| <b>4. Environment conditions:</b> Corresponding to Vectron standard CF001           |   |
| <b>5. Filters are Pb-free and 2002 /95 / EC RoHS compliant</b>                      |   |

6. Packing

maximum 1000 pcs. / reel

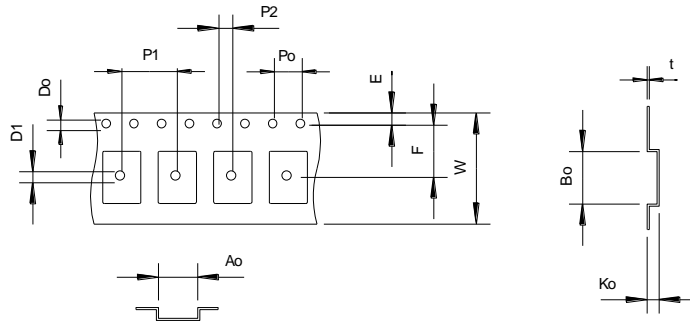


Tape dimension ( mm )



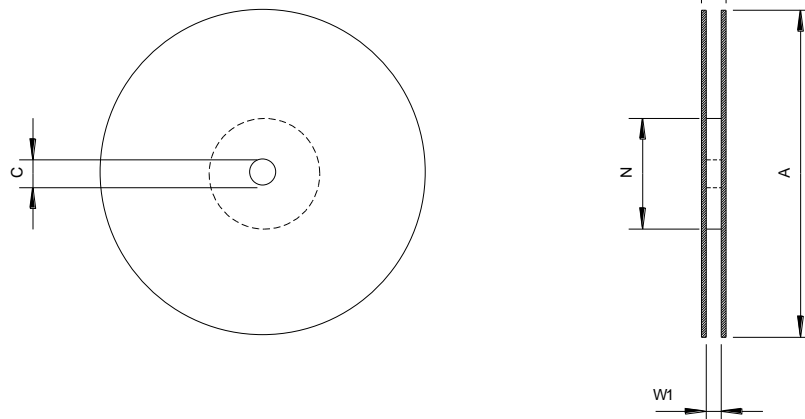
Tape ( all dimensions in mm )

- W: 16.0 ± 0.1
- Po: 4.0 ± 0.1
- P1: 8.0 ± 0.1
- P2: 2.0 ± 0.1
- Do: 1.5 + 0.1 / - 0
- D1: 1.6 + 0.1 / - 0
- E: 1.75 ± 0.1
- F: 7.5 ± 0.1
- Ko: 1.7 ± 0.1
- Ao: 5.6 ± 0.1
- Bo: 7.6 ± 0.1
- t: 0.3 ± 0.05



Reel ( all dimension in mm )

- A:  $\varnothing 178 \pm 2$
- C:  $\varnothing 13 \pm 0.5$
- N:  $\varnothing 60 \pm 1$
- W1: 17.5 ± 1.5
- W2: 21.5 ± 1.5



Edited by: \_\_\_\_\_ date: \_\_\_\_\_ name: \_\_\_\_\_