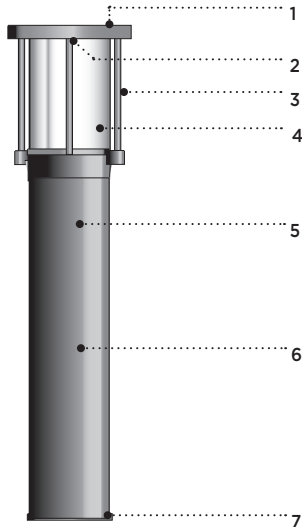


TYPE: \_\_\_\_\_ QUANTITY: \_\_\_\_\_ PROJECT: \_\_\_\_\_

CATALOG NUMBER:

FIXTURE    WATTAGE    VOLTAGE    FINISH    OPTION    OPTION    OPTION    OPTION



- 1- Heavy cast aluminum top cover with integral LED heat dissipating pad.
- 2- LED light engine.
- 3- Set of 4 x 1/2" (13) diameter solid aluminum struts.
- 4- High impact white translucent UV stabilized acrylic diffuser.
- 5- LED electronic driver.
- 6- 8" (203) diameter extruded aluminum base.
- 7- Cast aluminum anchor plate.

EC830



Acrylic diffuser

EC831



Acrylic diffuser with 12" dia. shade

EC832



Acrylic diffuser with three aluminum louvers

### MATERIALS

Eclipse is made of corrosion resistant 356 aluminum alloy with a copper (CU) content of less than 0.1%. LED light engine is thermally and mechanically secured to a cast aluminum cover integrating a heat dissipation pad to optimize light performance.

### ELECTRICAL

#### LED

**DRIVER** Standard driver is 0-10V dimming-ready (dims to 10%) with: 120-277 multi-volt compatibility (50-60Hz), optional 347V on request, minimum operating temperature of -30°C/-22°F, output over voltage protection, output over current protection, output short circuit protection with auto-recovery, and over temperature protection (110°C).

**LED** Standard 4000K/80CRI. Optional 2700K, 3000K and 3500K. Removable modular LED platform.

#### LIFE

75,000hrs  $L_{80}B_{50}$  (based on IESNA TM-21 Test Method and LM-80 data).  
145,000hrs  $L_{70}B_{50}$  (calculated projection from LM-80 data).

#### FINISH

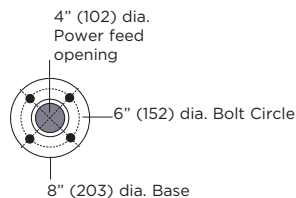
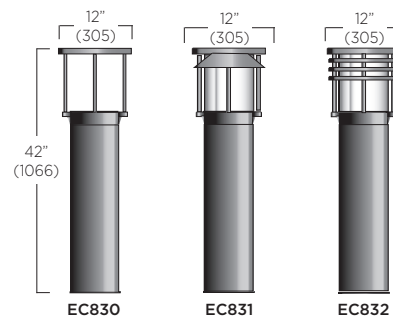
Five-stage preparation process includes preheating of cast aluminum parts for air extraction. Polyester powder coating is applied through an electrostatic process, and oven cured for long term finish.

#### MOUNTING

Mounts with a set of 4 x 1/2"-13 x 18" lg. galvanized anchor bolts.

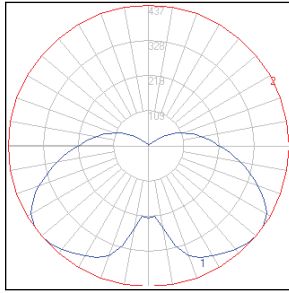
### CERTIFICATION

Tested to UL1598 and CSA 22.2 #250. ETL listed wet location. Photometric testing performed by an independent laboratory in accordance with IES LM-79-08 standards at 25°C. Lumen depreciation in accordance with IESNA LM80 standards. CE certification on request. Rated IP55.



# EC830/EC831/EC832 SERIES ECLIPSE MAXI - LED

## TYPICAL PHOTOMETRY SUMMARY






### Descriptive Information

EC830/EC831/EC832-L1W48r1

Total Lms: 2807 Lumens  
 Total Input Watts: 49.4 W  
 Source: LED  
 Efficacy: 56.8 Lumens/Watt  
 BUG: B1-U3-G2  
 CCT/CRI: 4000K/80  
 Maximum Candela: 437 @ 50°V

Please visit our web site [www.luminis.com](http://www.luminis.com) for complete I.E.S. formatted download data.

## LUMINAIRE SELECTION

MODEL#	LED LIGHT SELECTION (4000K/80CRI)	VOLTAGE <sup>1</sup>	FINISH																									
 <input type="checkbox"/> EC830  <input type="checkbox"/> EC831	<table border="1"> <thead> <tr> <th>SUFFIX</th> <th>INPUT WATTS</th> <th>DELIVERED LUMENS</th> <th>CRI</th> <th>CCT °K</th> </tr> </thead> <tbody> <tr> <td><input type="checkbox"/> L1W12r1</td> <td>13W</td> <td>671</td> <td>80</td> <td>4000K</td> </tr> <tr> <td><input type="checkbox"/> L1W18r1</td> <td>22W</td> <td>1099</td> <td></td> <td></td> </tr> <tr> <td><input type="checkbox"/> L1W30r1</td> <td>38W</td> <td>1828</td> <td></td> <td></td> </tr> <tr> <td><input type="checkbox"/> L1W48r1</td> <td>49W</td> <td>2807</td> <td></td> <td></td> </tr> </tbody> </table>	SUFFIX	INPUT WATTS	DELIVERED LUMENS	CRI	CCT °K	<input type="checkbox"/> L1W12r1	13W	671	80	4000K	<input type="checkbox"/> L1W18r1	22W	1099			<input type="checkbox"/> L1W30r1	38W	1828			<input type="checkbox"/> L1W48r1	49W	2807			<input type="checkbox"/> 120V <input type="checkbox"/> 277V Optional <input type="checkbox"/> 347V	<b>STANDARD COLORS</b> <input type="checkbox"/> WHT Snow white <input type="checkbox"/> BKT Jet black <input type="checkbox"/> BZT Bronze <input type="checkbox"/> MST Matte silver <input type="checkbox"/> GRT Titanium gray <input type="checkbox"/> DGT Gun metal <input type="checkbox"/> CHT Champagne <input type="checkbox"/> SGT Steel Gray <input type="checkbox"/> BGT English Cream  <b>OPTIONAL COLORS</b> Wood grain finishes <input type="checkbox"/> NMR Mahogany red <sup>2</sup> <input type="checkbox"/> NMO Maple oak <sup>2</sup> <input type="checkbox"/> NTW Teak wood <sup>2</sup> Base stand only  <input type="checkbox"/> CS Custom color <input type="checkbox"/> RAL RAL# color  (Refer to color chart)
SUFFIX	INPUT WATTS	DELIVERED LUMENS	CRI	CCT °K																								
<input type="checkbox"/> L1W12r1	13W	671	80	4000K																								
<input type="checkbox"/> L1W18r1	22W	1099																										
<input type="checkbox"/> L1W30r1	38W	1828																										
<input type="checkbox"/> L1W48r1	49W	2807																										
 <input type="checkbox"/> EC832																												

## OPTIONS

### ELECTRICAL

- REML2-50** Remote mount battery backup for LED 90 mins, 7W  
Remote mount to 50ft. 12" square enclosure with access cover
- EMLC2** Integral battery backup for LED, 90 mins, 7W (not compatible with PR8 option)
- FS** Fuse<sup>3</sup>
- PH** Photocell<sup>3</sup>
- 347L** 347V input power driver

### MOUNTING

- PR8** Pedestal mount adaptor. OAH 19" (483).

### LIGHT

- Alternate CCT °K LED (LCF: Lumen conversion factor)
- K27** 2700K CCT 80 CRI (LCF: 0.91)
  - K3** 3000K CCT 80 CRI (LCF: 0.94)
  - K35** 3500K CCT 80 CRI (LCF: 0.98)

NOTE: Other CCT & higher CRI available, please consult factory.

### ACCESSORIES

- GFI** Ground fault circuit interruption receptacle<sup>4</sup>
- CGF** Ground fault circuit interruption with clear in-use cover<sup>4</sup>
- HS8** House side shield

### NOTES

- 1- Luminaires are factory prewired for 120V (if no voltage is specified). For other voltages, please specify with catalog number or consult factory.
- 2- Cast aluminum top & base covers are as follows for selected wood grain finishes: BZT paired with NMR; SGT paired with NMO; BGT paired with NTW (Other colors available. Please contact factory).
- 3- Fuse and photocell options are normally installed with poles when specified with Luminis luminaires (except for other types of mounting).
- 4- GFI and CGF options are installed 18" above grade unless otherwise specified. CGF cover protrudes by 3.62" (92).

# LUMINIS®

LUMINIS | Toll free: 866.586.4647 Fax: 514.683.8872 Email: [info@luminis.com](mailto:info@luminis.com)  
 260 Labrosse, Pointe-Claire (QC) Canada H9R 5L5

LUMINIS.COM

Luminaires may be altered for design improvement or discontinued without prior notice.

Oct 2017 Rev 0