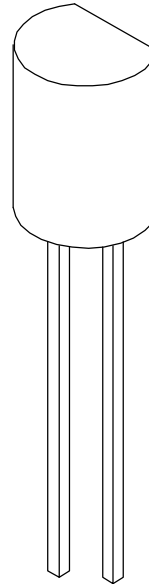
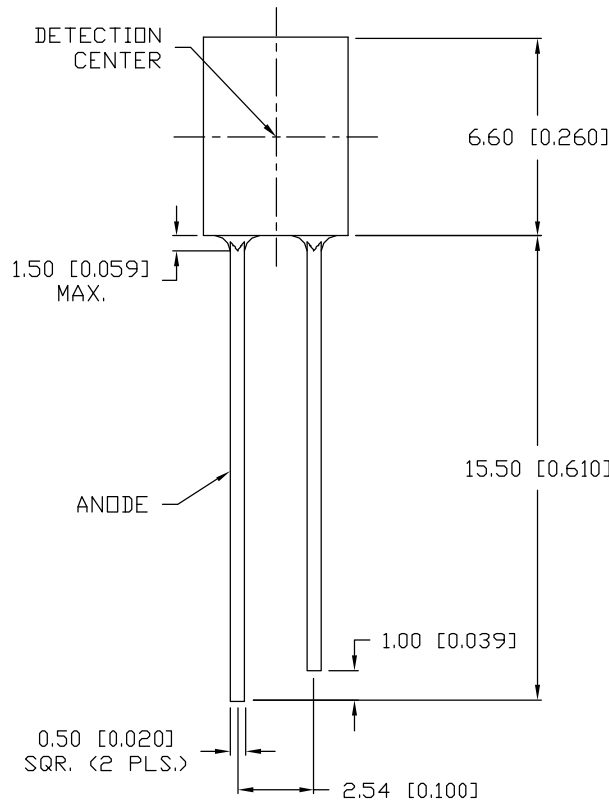
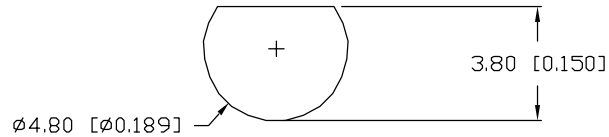


UNCONTROLLED DOCUMENT

PART NUMBER
OED-HPIRC572L140

REV.
A

REV.	E.C.N. NUMBER AND REVISION COMMENTS	DATE
A	E.C.N. #10BRDR. & REDRAWN IN 3D.	1.9.03



ELECTRO-OPTICAL CHARACTERISTICS $T_A = 25^\circ\text{C}$

PARAMETER	MIN	TYP	MAX	UNITS	TEST COND
PEAK WAVELENGTH SENS.		980		nm	
SPECTRAL SENSITIVITY	840		1200	nm	
OPEN CIRCUIT VOLTAGE		0.35		V	$E_e = 5.00 \text{ mW/cm}^2$
SHORT CIRCUIT CURRENT		70		μA	$E_e = 5.00 \text{ mW/cm}^2$
DARK CURRENT			30	nA	$V_r = 10\text{V}$
SWITCHING TIME		50		nS	$V_r = 10\text{V}, R_l = 1000\Omega$
TOTAL CAPACITANCE		25		pF	$E_e = 0.0 \text{ mW/cm}^2$ $V_r = 3\text{V}, F = 1\text{MHz}$
HALF ANGLE		± 70		degrees	
EPOXY FINISH:		BLACK			

LIMITS OF SAFE OPERATION AT 25°C

PARAMETER	MAX	UNITS
REVERSE VOLTAGE	32	V
POWER DISSIPATION	150	mW
OPERATING TEMP.	-25 TO +85	$^\circ\text{C}$
STORAGE TEMP.	-40 TO +85	$^\circ\text{C}$
SOLDERING TEMP.	+260	$^\circ\text{C}$
2.0mm FROM BODY		3 SEC. MAX

*UNLESS OTHERWISE SPECIFIED TOLERANCES PER DECIMAL PRECISION ARE: X=±1 (±0.039), X.X=±0.5 (±0.020), X.XX=±0.25 (±0.010), X.XXX=±0.127 (±0.005). LEAD SIZE=±0.05 (±0.002), LEAD LENGTH=±0.75 (±0.030). MIN.=+DECIMAL PRECISION MAX.=+0.00 -DECIMAL PRECISION

UNCONTROLLED DOCUMENT

REV.	PART NUMBER
A	OED-HPIRC572L140

CONFIDENTIAL INFORMATION
THE INFORMATION CONTAINED IN THIS DOCUMENT IS THE PROPERTY OF LUMEX INC. EXCEPT AS SPECIFICALLY AUTHORIZED IN WRITING BY LUMEX INC., THE HOLDER OF THIS DOCUMENT SHALL KEEP ALL INFORMATION CONTAINED HEREIN CONFIDENTIAL AND SHALL PROTECT SAME IN WHOLE OR IN PART FROM DISCLOSURE AND DISSEMINATION TO ALL THIRD PARTIES.



290 E. HELEN ROAD
PALATINE, IL 60067-6976
PHONE: +1.847.359.2790
US WEB: www.lumex.com
TW WEB: www.lumex.com.tw

5mm x 7mm RIGHT ANGLE PHOTODIODE.

RELIABILITY NOTE
OUR MANY YEARS OF EXPERIENCE DATA ACCUMULATION INDICATE THAT SOLDER HEAT IS A MAJOR CAUSE OF EARLY AND FUTURE FAILURE. PLEASE PAY ATTENTION TO YOUR SOLDERING PROCESS.

DRAWN BY: BC	CHECKED BY:	APPROVED BY:	DATE: 12.18.97
			PAGE: 1 OF 1
			SCALE: N/A