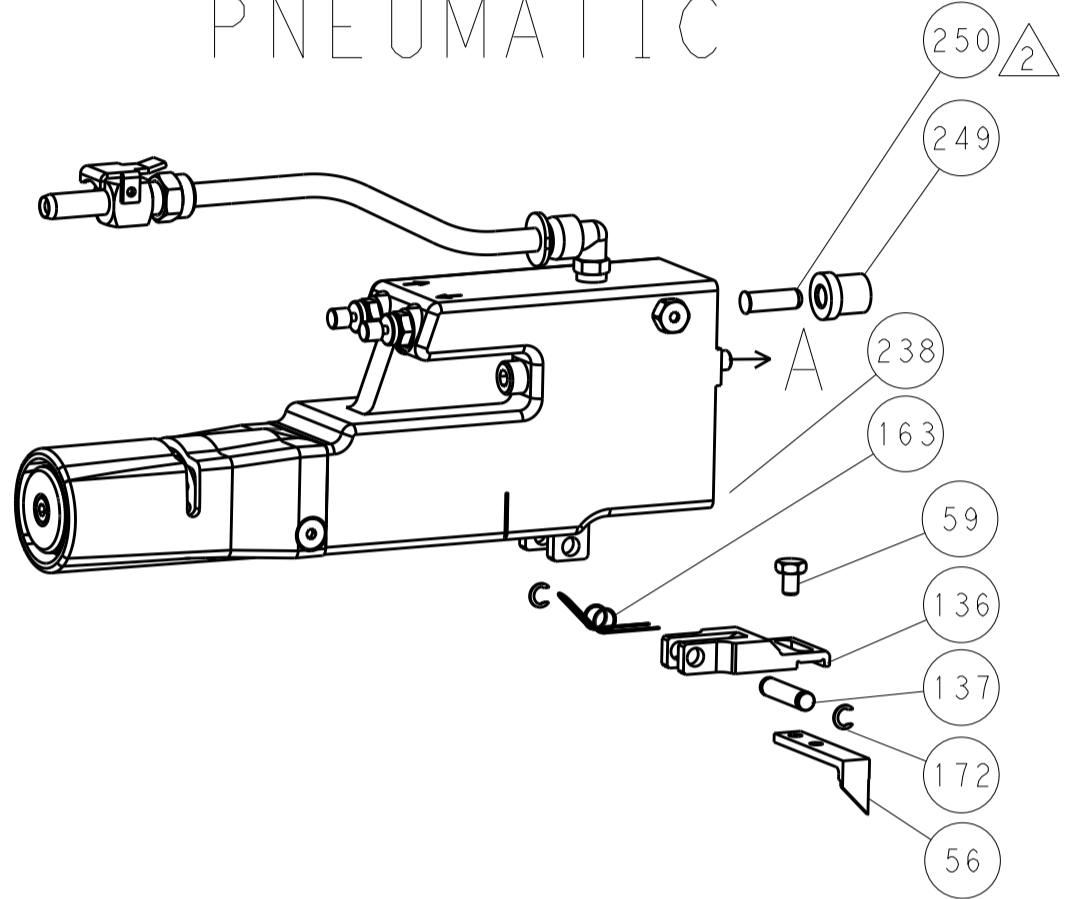


LOC		DIST		REVISIONS			
A	66	P	LTM	DESCRIPTION	DATE	OWN	APVD
-	-	-	-	SEE SHEET 1	-	-	-

FEED TYPE MECHANICAL



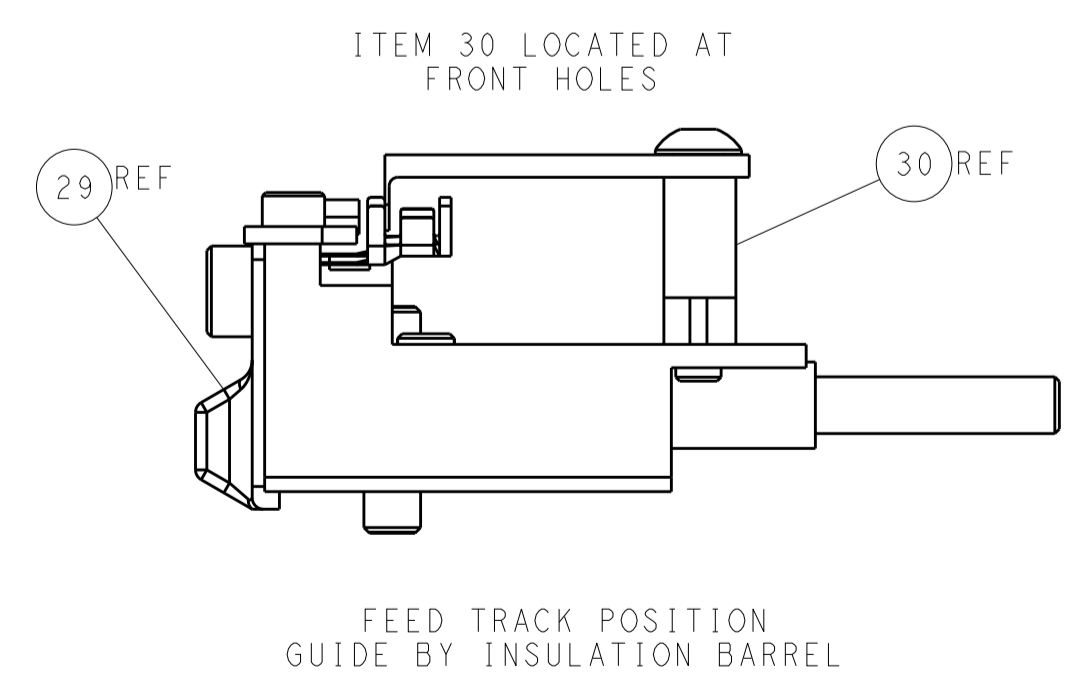
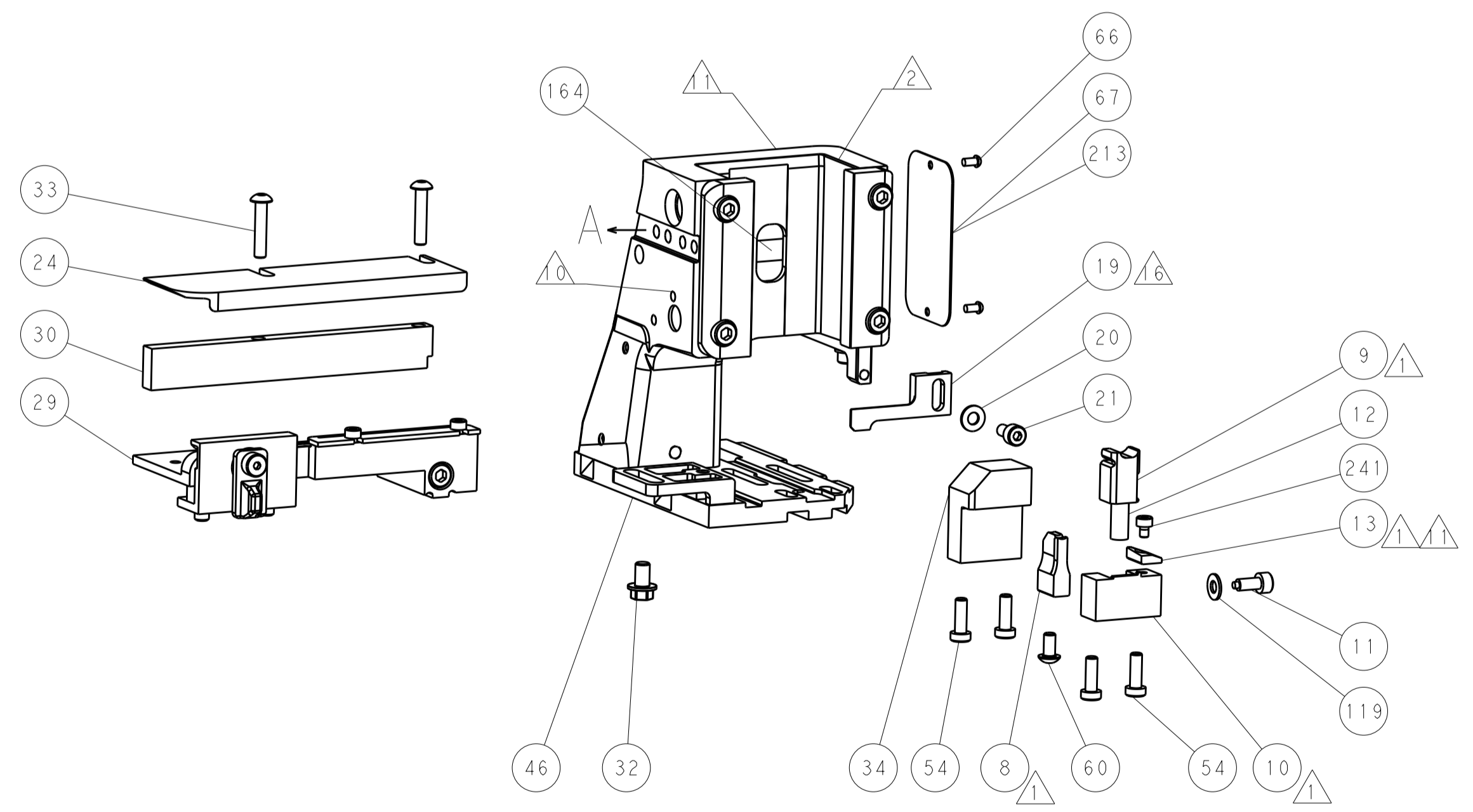
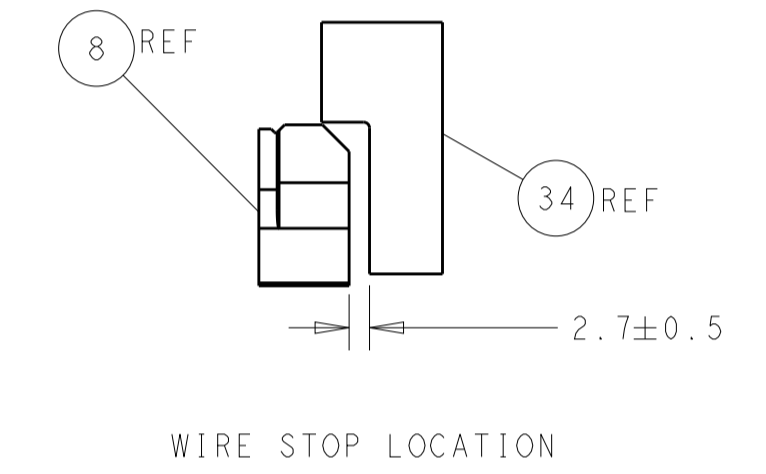
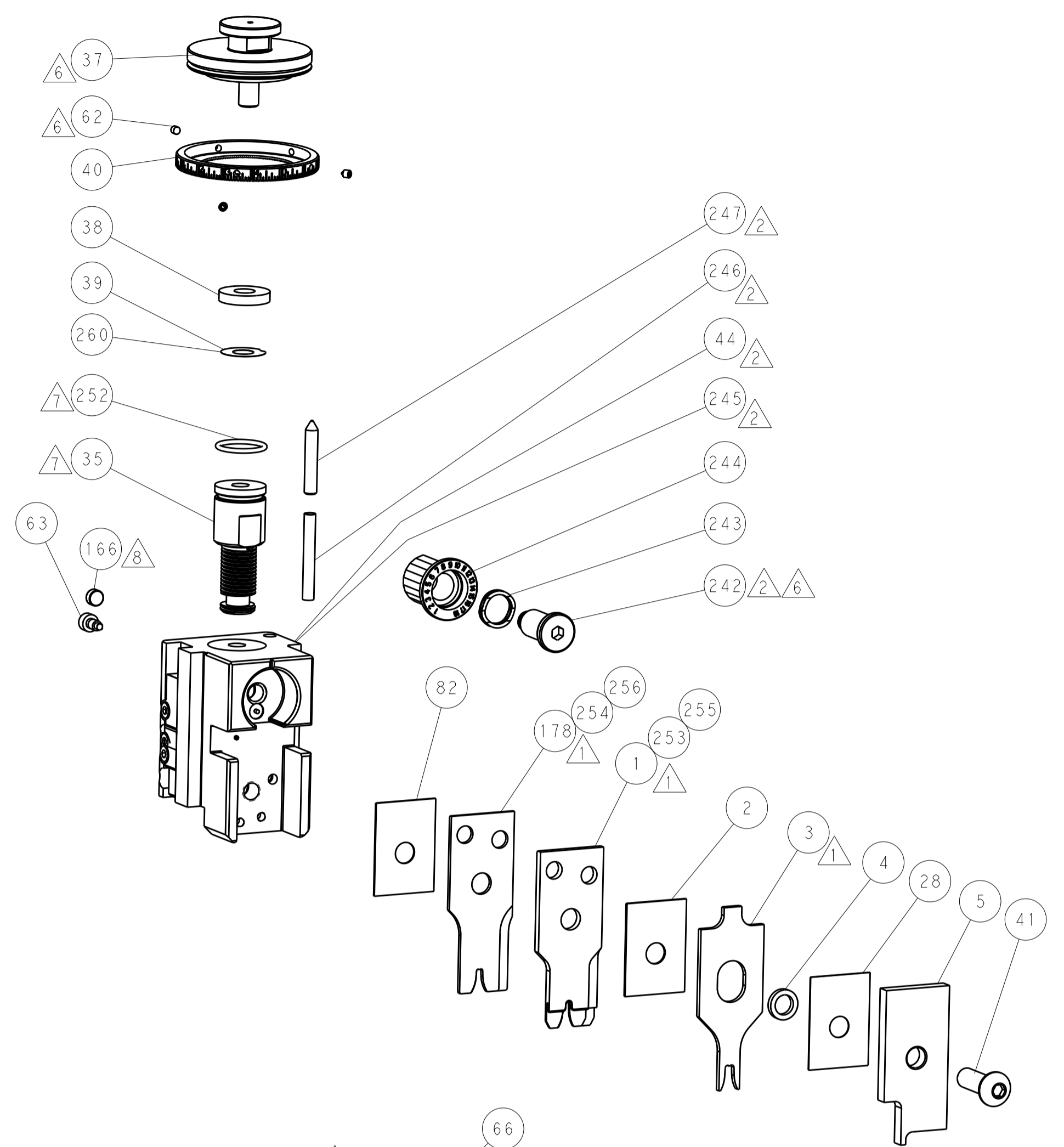
PNEUMATIC



SERVO LATCH PLATE



CAM POSITIONS



ATLANTIC VERSION
 Shown on sheets 1 of 4 & 2 of 4
 (Pacific version shown on sheets 3 of 4 & 4 of 4)

DIMENSIONS:		TOLERANCES UNLESS OTHERWISE SPECIFIED:		DWN: L. GROSS 31JAN2013		TE Connectivity	
mm	0 PLC	±		CHK: T. ELBIN 31JAN2013	NAME: Ocean Side Feed Applicator		TE Connectivity Harrisburg, PA 17105-3608
	1 PLC	±		APVD: M. CLIFFORD 31JAN2013	RESTRICTED TO		
	2 PLC	±		PRODUCT SPEC	SIZE: CAGE CODE: DRAWING NO: A11 00779 ©=2151314		
	3 PLC	±		APPLICATION SPEC	WEIGHT		
	4 PLC	±		ANGLES	MATERIAL		
	FINISH			Customer Accessible Production Drawing		SCALE: 1:2	SHEET 2 OF 4 REV C

SET UP GAUGE 2119599-1, LOC A, DIST 66, REVISIONS table with columns for P, LTM, DESCRIPTION, DATE, DWN, APVD.

APPLICATOR STYLE CONVERSION CHART table with columns: CONVERT TO, PART NUMBERS REQUIRED, and various part numbers.

APPLICATOR DATA table with columns: CRIMP, SIZE, TYPE, WIRE, STABILIZER, INSULATION, and APPLICATOR INSTRUCTIONS.

Table with columns: PART NO, REV, WIRE SIZE, WIRE CRIMPER, STABILIZER CRIMPER, INSULATION CRIMPER, ANVIL.

TERMINAL DATA: TE TERMINAL, TE CRIMP SPECIFICATION table with columns: WIRE STRIP LENGTH, INSULATION DIAMETER RANGE, TERMINAL APPLICATION SPECIFICATION, TERMINALS APPLIED.

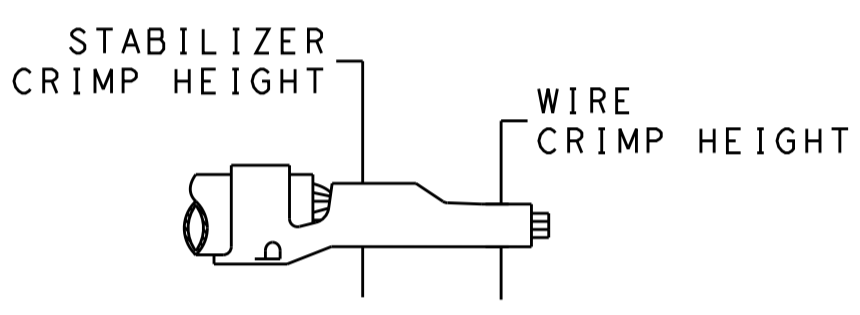


Table with columns: WIRE SIZE, CRIMP HEIGHT mm [INCH], WIRE CRIMPER PART NUMBER, STABILIZER CRIMP HEIGHT mm [INCH], STAIBLIZER CRIMPER PART NUMBER, CRIMP HEIGHT REFERENCE SETTING.

TERMINAL DATA: TE TERMINAL, TE CRIMP SPECIFICATION table with columns: WIRE STRIP LENGTH, INSULATION DIAMETER RANGE, TERMINAL APPLICATION SPECIFICATION, TERMINALS APPLIED.

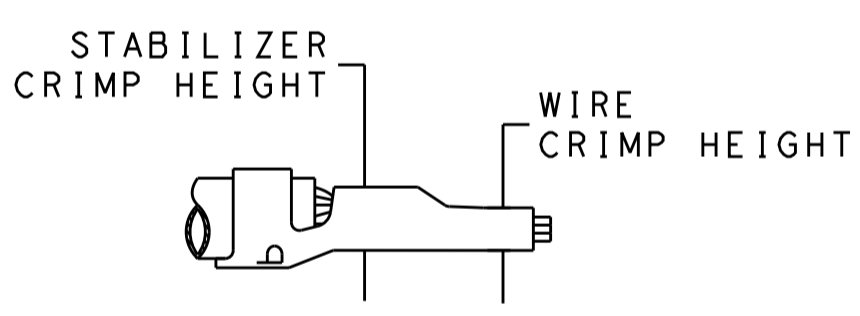


Table with columns: WIRE SIZE, CRIMP HEIGHT mm [INCH], WIRE CRIMPER PART NUMBER, STABILIZER CRIMP HEIGHT mm [INCH], STAIBLIZER CRIMPER PART NUMBER, CRIMP HEIGHT REFERENCE SETTING.

- RECOMMENDED SPARE PARTS
GREASE BEARING SURFACES LIGHTLY
LUBRICATE DAILY PER THE APPLICATOR INSTRUCTION SHEET SUPPLIED WITH THE APPLICATOR.
APPLICATOR SPECIFIC DATA TO BE ENTERED INTO BLANK MEMORY CHIP AT ASSEMBLY.
ADJUSTMENT OF THE STRIPPER MAY BE REQUIRED WHEN MOVING THE APPLICATOR BETWEEN BENCH AND LEADMAKER APPLICATIONS.
APPLY PART NUMBER 1-23419-5 LOCTITE TO THREADS OF ITEMS 62.
GREASE THREADS, GROOVE AND O-RING ON ITEMS 139 & 152.

*WARNING ON INSTALLATION, SET WIRE DISC, ITEM 40 TO LARGEST WIRE SIZE SETTING. USE OF SETTINGS BELOW MINIMUM REQUIRED CRIMP HEIGHT SETTING WILL CAUSE DAMAGE TO CRIMP TOOLING.
PACIFIC VERSION
Shown on sheets 3 of 4 & 4 of 4
(Atlantic version shown on sheets 1 of 4 & 2 of 4)

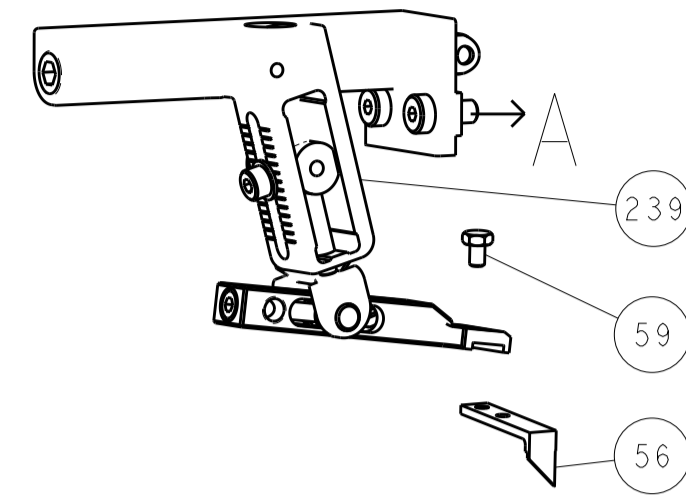
- 8 MAGNET MUST BE ORIENTED CORRECTLY IN ORDER TO PROPERLY ACTUATE THE COUNTER.
9 CRIMP HEIGHT REFERENCE SETTING WAS THE SETTING USED WHEN THE APPLICATOR WAS QUALIFIED AT THE FACTORY.
10 SPARE FEED CAM STORAGE LOCATION REFER TO INSTRUCTION SHEET FOR ADDITIONAL INFORMATION.
11 TO CONVERT THE APPLICATOR TO A NON-CARRIER CUTTING STYLE, REMOVE ITEM 13 AND ATTACH TO THE LOCATION ON BACK SIDE OF THE HOUSING.
12 ITEMS 1 & 178 TO BE USED WITH 12 AWG ONLY.
13 ITEMS 253 & 254 TO BE USED WITH 14 AWG ONLY.
14 ITEMS 255 & 256 TO BE USED WITH 18-16 AWG ONLY.
15 POSITION ITEM 19 BETWEEN ITEMS 1 AND 178.

Main parts list table with columns: P, LTM, DESCRIPTION, DATE, DWN, APVD, and various part numbers and descriptions.

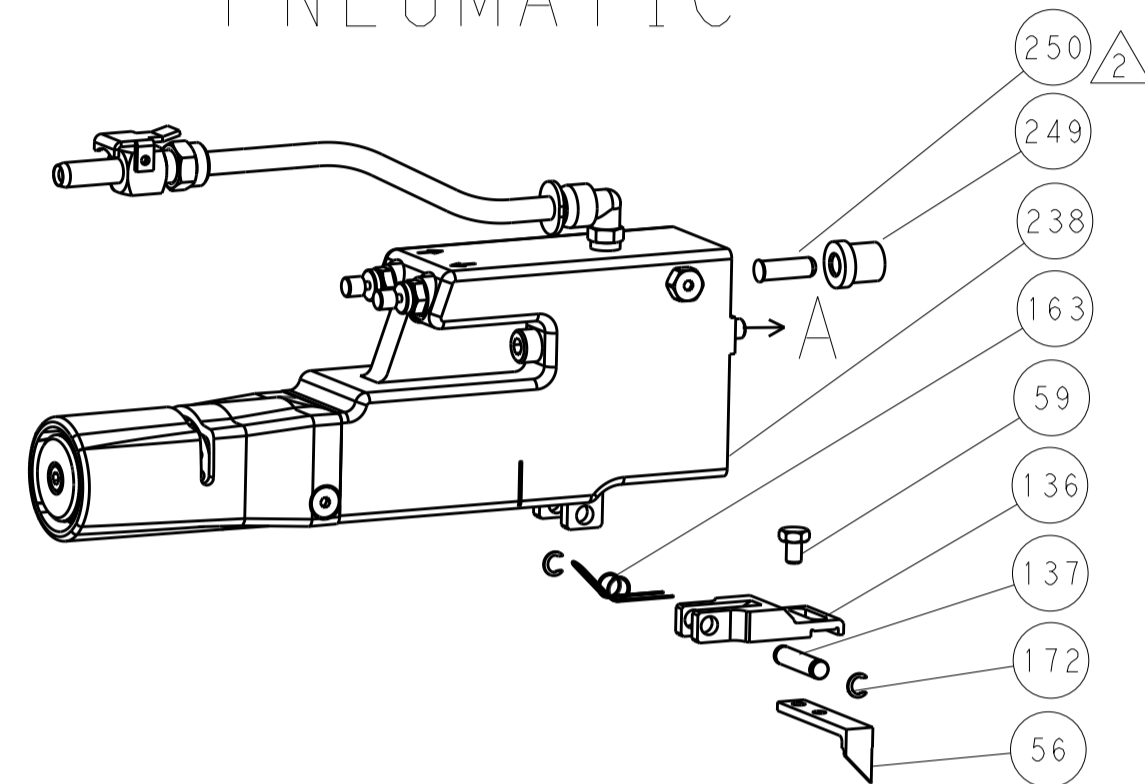
Customer Accessible Production Drawing table with columns: DIMENSIONS, TOLERANCES UNLESS OTHERWISE SPECIFIED, MATERIAL, FINISH, WEIGHT, SCALE, SHEET, OF, REV.

LOC		DIST		REVISIONS			
A	66	P	LTM	DESCRIPTION	DATE	OWN	APVD
		-	-	SEE SHEET 1	-	-	-

FEED TYPE MECHANICAL



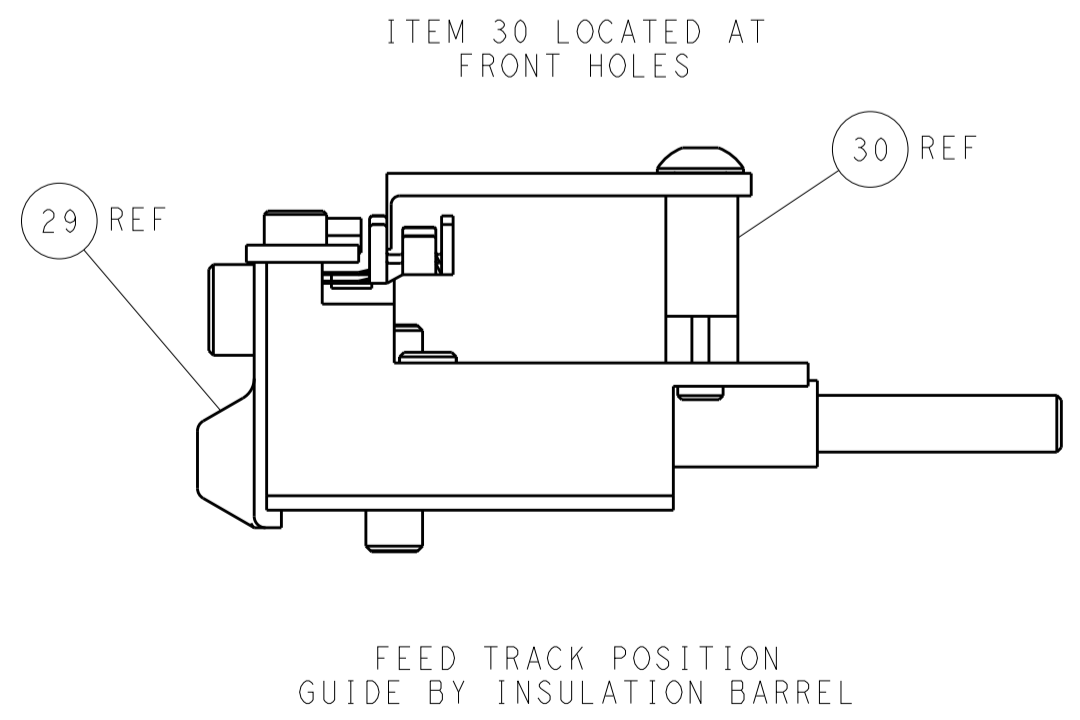
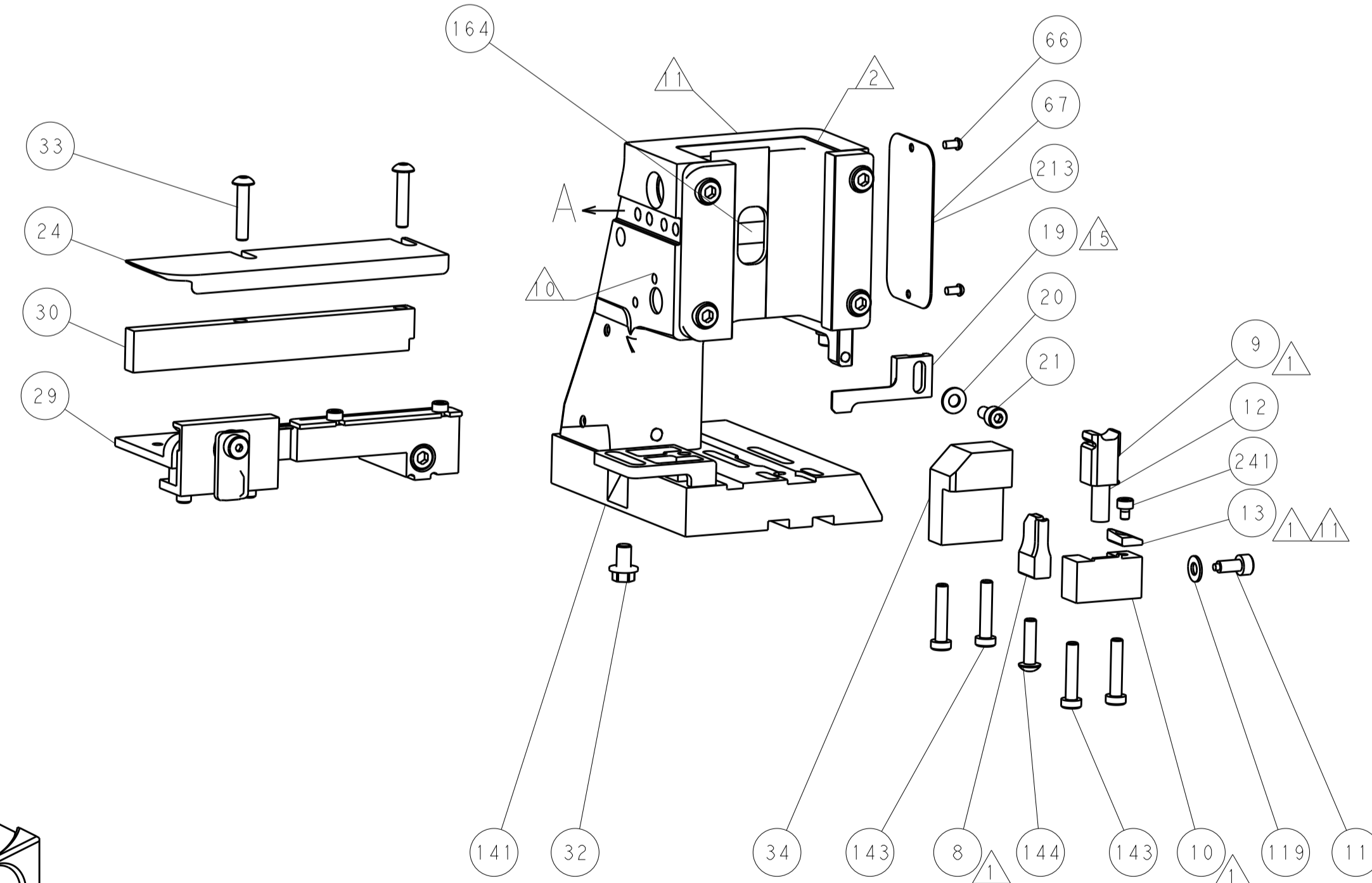
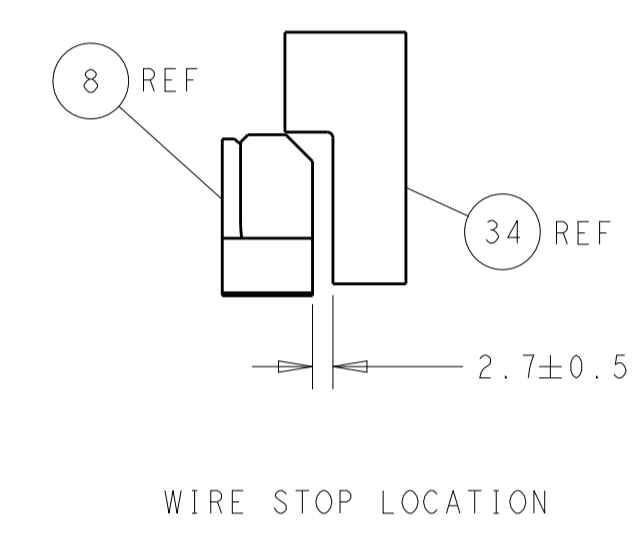
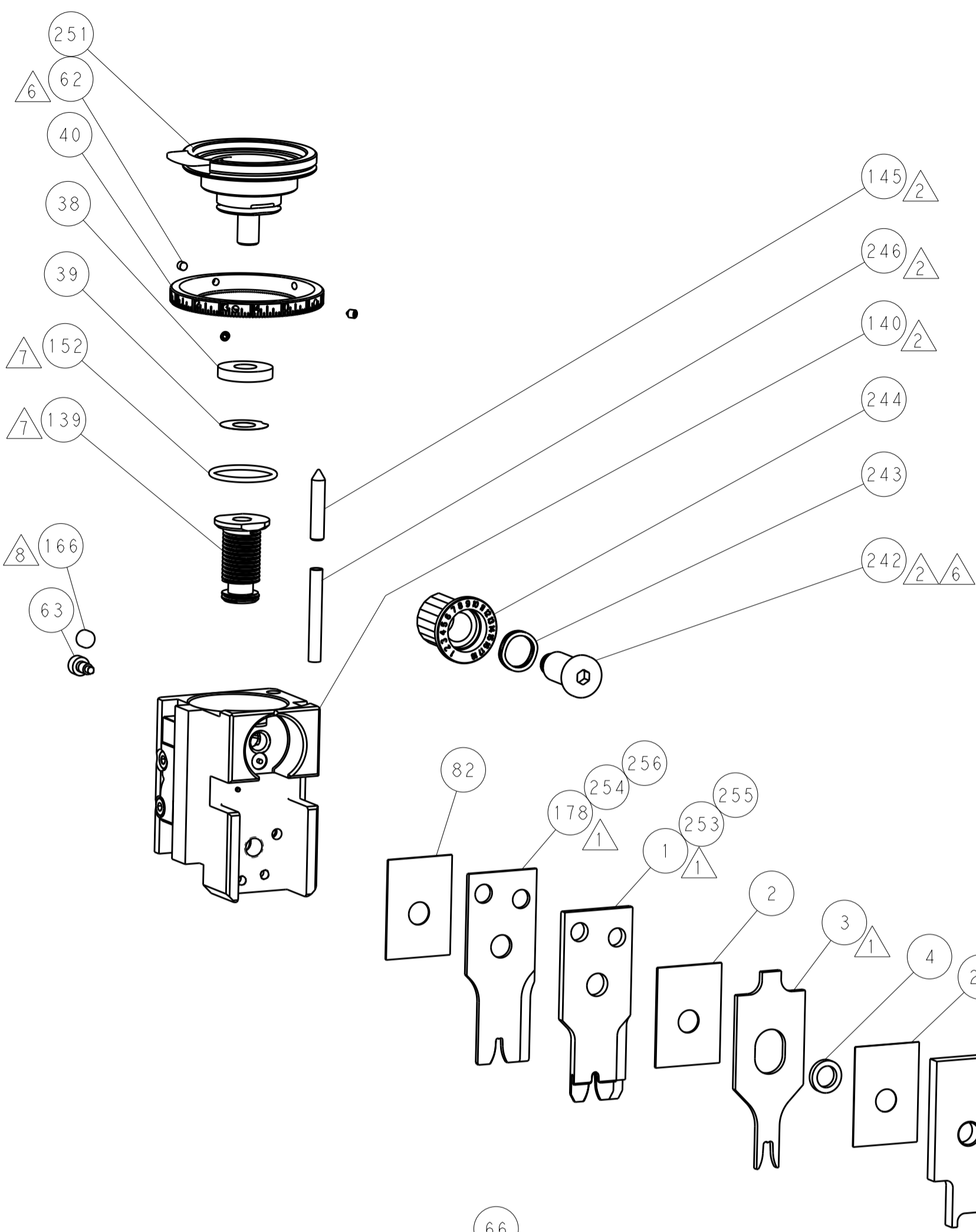
PNEUMATIC



SERVO LATCH PLATE



CAM POSITIONS



PACIFIC VERSION
 Shown on sheets 3 of 4 & 4 of 4
 (Atlantic version shown on sheets 1 of 4 & 2 of 4)

DIMENSIONS:		TOLERANCES UNLESS OTHERWISE SPECIFIED:		DWN: EL GROSS 31JAN2013		TE Connectivity	
mm	0 PLC ±	1 PLC ±	2 PLC ±	3 PLC ±	4 PLC ±	5 PLC ±	Harrisburg, PA 17105-3608
MATERIAL:	FINISH:	WEIGHT:	SCALE:	SIZE:	CAGE CODE:	DRAWING NO:	RESTRICTED TO:
			1:2	A1	00779	2151314	
Customer Accessible Production Drawing				SHEET 4 OF 4		REV C	