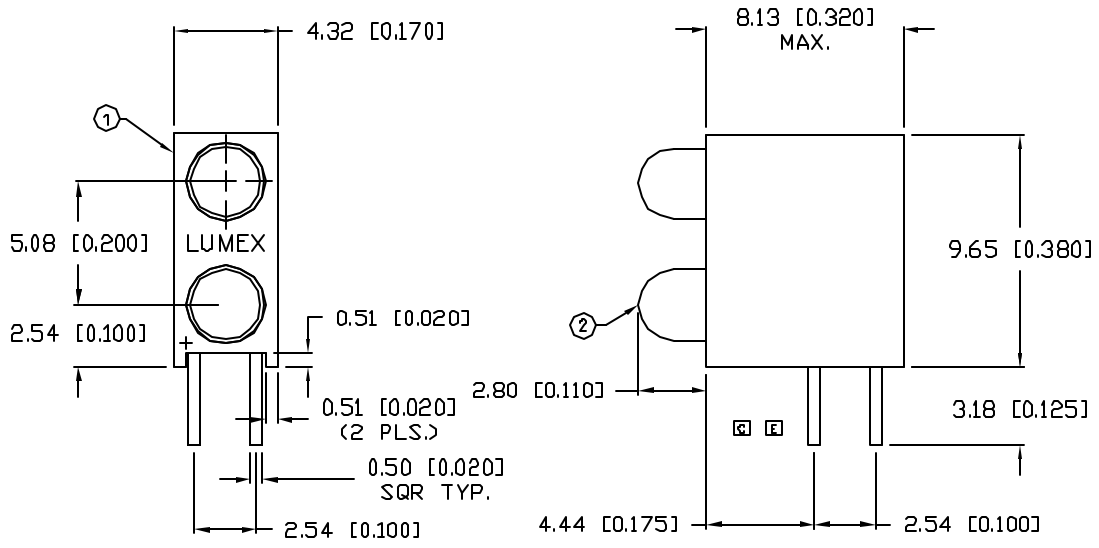


UNCONTROLLED DOCUMENT

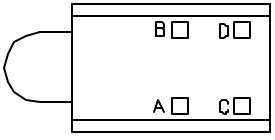
PART NUMBER		REV.
SSF-LXH240YGYGW		H

REV.	E.C.N. NUMBER AND REVISION COMMENTS	DATE
A	CHG'D LEAD LENGTH/	08.30.93
B	CHG'D SOLDER SPECS/	07.14.94
C	CHG'D HOLDER BOTTOM & SAFE OP. SPECS.	08.16.94
D	UPDATED SPECS./	11.29.94
E	CHG'D. HOLDER BOTTOM./	02.09.95
F	E.C.N. #10100.	10.09.95
G	E.C.N. #10104.	02.06.96
H	E.C.N. #11148.	03.19.08



PIN-OUT

A.	BICOLOR LED - YELLOW ANODE
B.	BICOLOR LED - GREEN ANODE
C.	BICOLOR LED - YELLOW ANODE
D.	BICOLOR LED - GREEN ANODE



ELECTRO-OPTICAL CHARACTERISTICS $T_A=25^\circ\text{C}$ $I_f=20\text{mA}$

PARAMETER	MIN	TYP	MAX	UNITS	TEST COND
PEAK WAVELENGTH		585 (YELLOW)		nm	
		565 (GREEN)		nm	
FORWARD VOLTAGE (Y/G)		2.1/2.2	2.5/2.6	V_f	
REVERSE VOLTAGE	5.0			V_r	$I_f=100\mu\text{A}$
AXIAL INTENSITY (Y/G)		30		mcd	$I_f=20\text{mA}$
VIEWING ANGLE		60		2x theta	
EMITTED COLOR:	YELLOW/GREEN				
EPOXY LENS FINISH:	MILKY WHITE DIFFUSED				

Ⓜ LIMITS OF SAFE OPERATION AT 25°C PER CHIP

PARAMETER	COLORS	MAX	UNITS
PEAK FORWARD CURRENT*	(Y/G)	150/150	mA
STEADY CURRENT	(Y/G)	30/25	mA
POWER DISSIPATION		105	mW
DERATE FROM 25°C	(Y/G)	-1.2	mW/°C
Ⓜ OPERATING, STORAGE TEMP.		-40 TO +85	°C
SOLDERING TEMP.		+260	°C
Ⓜ 2.0mm FROM BODY			3 SEC. MAX

* $t < 10\mu\text{s}$

NOTES:

- SSH-LXH240 HOLDER. MATERIAL: BLACK NYLON 94V-0.
- SSL-LX3044YGW LED (2 PIECES).

*UNLESS OTHERWISE SPECIFIED TOLERANCES PER DECIMAL PRECISION ARE: X=±1 (±0.039), XX=±0.5 (±0.020), XXX=±0.25 (±0.010), XXXX=±0.127 (±0.005). LEAD SIZE=±0.05 (±0.002), LEAD LENGTH=±0.75 (±0.030). MIN= +DECIMAL PRECISION -0.00 MAX.= +0.00 -DECIMAL PRECISION

UNCONTROLLED DOCUMENT



REV.	PART NUMBER
H	SSF-LXH240YGYGW

CONFIDENTIAL INFORMATION
 THE INFORMATION CONTAINED IN THIS DOCUMENT IS THE PROPERTY OF LUMEX INC. EXCEPT AS SPECIFICALLY AUTHORIZED IN WRITING BY LUMEX INC., THE HOLDER OF THIS DOCUMENT SHALL KEEP ALL INFORMATION CONTAINED HEREIN CONFIDENTIAL AND SHALL PROTECT SAME IN WHOLE OR IN PART FROM DISCLOSURE AND DISSEMINATION TO ALL THIRD PARTIES.

RELIABILITY NOTE
 OUR MANY YEARS OF EXPERIENCE DATA ACCUMULATION INDICATE THAT SOLDER HEAT IS A MAJOR CAUSE OF EARLY AND FUTURE FAILURE. PLEASE PAY ATTENTION TO YOUR SOLDERING PROCESS.

290 E. HELEN ROAD
 PALATINE, IL 60067-6976
 PHONE: +1.847.359.2790
 US WEB: www.lumex.com
 TW WEB: www.lumex.com.tw

T-3mm LED, RIGHT ANGLE FAULT INDICATOR,
 BICOLOR UPPER & LOWER, MILKY WHITE EPOXY.

DRAWN BY:	CHECKED BY:	APPROVED BY:	DATE: 01.19.93
			PAGE: 1 OF 1
			SCALE: N/A