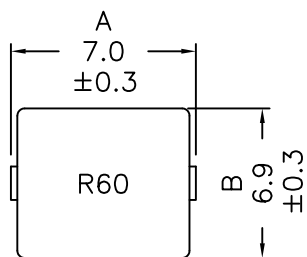
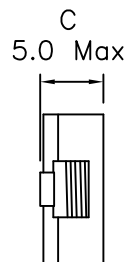


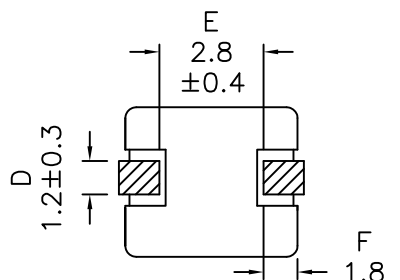
1. Mechanical Dimensions:



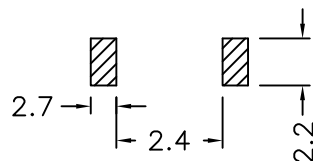
Top view



Side view

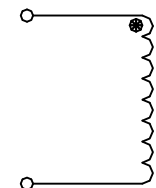


Bottom view



Typical Pad Layout

2. Schematic:



3. Electrical Specifications:

OCL: 0.60uH±20% @100KHz 0.25V

Q: tbd @100KHz 0.25V

DCR: 2.53 mOhms Max

Isat: 19.0Adc (Based on 20% Typ drop in OCL)

Notes:

- Solderability: Leads shall meet MIL-STD-202G, Method 208H for solderability.
- Flammability: UL94V-0
- ASTM oxygen index: > 28%
- Insulation System: Class F 155°C. UL file E151556
- Operating Temperature Range: All listed parameters are to be within tolerance from -40°C to +85°C
- Storage Temperature Range: -55°C to +125°C
- Aqueous wash compatible
- SMD Lead Coplanarity: ±0.004"(0.102mm)
- Electrical and mechanical specifications 100% tested
- RoHS Compliant Component

PRELIMINARY

DOC. REV: A/1

XFMRs Inc www.XFMRs.com	Title: MAGNETICALLY SHIELDED HIGH CURRENT INDUCTOR		
UNLESS OTHERWISE SPECIFIED TOLERANCES: .xx ±0.25 Dimensions in MM	P/N: XFHCL6MD-R60M		REV. A
	DWN.	Feng	Jul-25-12
SHEET 1 OF 1	CHK.	YK Liao	Jul-25-12
	APP.	BSJ	Jul-25-12

PROPRIETARY

Document is the property of XFMRs Group & is not allowed to be duplicated without authorization.