

DC/DC Converters

15 Watts WC Series

XPiQ inc.

Intelligent Design Quality Product



2:1 Input Range

Isolated Outputs

Efficiency to 86%

Fully Regulated Outputs

Input π Filter

Six-sided Shield

Specification

Input

- Input Voltage Range • 12 V (9-18 VDC)
24 V (18-36 VDC)
48 V (36-72 VDC)

- Input Filter • π Network

Output

- Output Power • 15 Watts
- Output Voltage • 5, 12 & 15 V single & dual output models
- Voltage Accuracy • $\pm 1\%$ max
- Voltage Trim • $\pm 5\%$
- Line Regulation • $\pm 0.5\%$ max
- Load Regulation • $\pm 1\%$ max for 75% load change
- Voltage Balance • $\pm 1\%$ max (dual output at full load)
- Ripple & Noise • 1% of Vout max (DC-20 MHz)
- Temperature Coefficient • $\pm 0.02\%/^{\circ}\text{C}$ max
- Short Circuit Protection • Indefinite

General

- Switching Frequency • 100 kHz
- Efficiency • See Table
- Isolation • 500 V DC input to output (1000 M Ω /80 pF)
- Dimensions • 2.0" x 2.0" x 0.4"
- Weight • 80 g

Environmental

- Operating Temperature • -25°C to $+71^{\circ}\text{C}$
- Storage Temperature • -55°C to $+105^{\circ}\text{C}$

OUTPUT VOLTAGE & CURRENT RATINGS

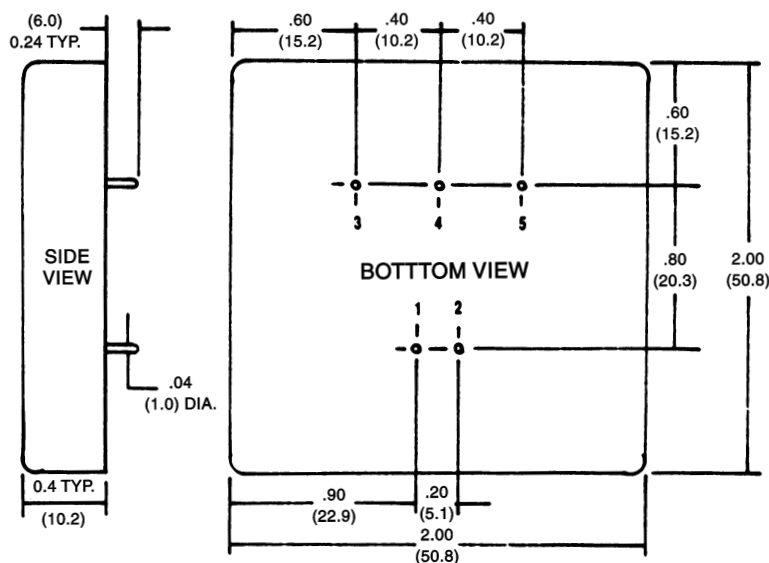
WC

Input Voltage	Output Voltage	Output Current	Input Current		Efficiency	Model Number
			No Load	Full Load		
9-18 V DC	5 V DC	3000 mA	30 mA	1560 mA	80%	WC101
	12 V DC	1250 mA	30 mA	1540 mA	81%	WC102
	15 V DC	1000 mA	30 mA	1525 mA	82%	WC103
	±5 V DC	±1500 mA	30 mA	1560 mA	80%	WC104
	±12 V DC	±625 mA	30 mA	1540 mA	81%	WC105
	±15 V DC	±500 mA	30 mA	1520 mA	82%	WC106
18-36 V DC	5 V DC	3000 mA	20 mA	760 mA	82%	WC201
	12 V DC	1250 mA	20 mA	750 mA	83%	WC202
	15 V DC	1000 mA	20 mA	745 mA	84%	WC203
	±5 V DC	±1500 mA	20 mA	760 mA	82%	WC204
	±12 V DC	±500 mA	20 mA	750 mA	83%	WC205
	±15 V DC	±625 mA	20 mA	745 mA	84%	WC206
36-72 V DC	5 V DC	3000 mA	20 mA	370 mA	84%	WC301
	12 V DC	1250 mA	20 mA	370 mA	84%	WC302
	15 V DC	1000 mA	20 mA	365 mA	86%	WC303
	±5 V DC	±1500 mA	20 mA	370 mA	84%	WC304
	±12 V DC	±625 mA	20 mA	370 mA	84%	WC305
	±15 V DC	±500 mA	20 mA	365 mA	86%	WC306

Notes

1. Nominal input voltage is 12 VDC for WC1XX models, 24 VDC for WC2XX and 48 VDC for WC3XX models.

Mechanical Details



PIN CONNECTIONS		
Pin	Single Output	Dual Output
1	+ Input	+ Input
2	- Input	-Input
3	+Output	+Output
4	No Pin	Common
5	-Output	-Output

NOTES:

1. Dimensions in inches (mm).
2. Specifications subject to change.

