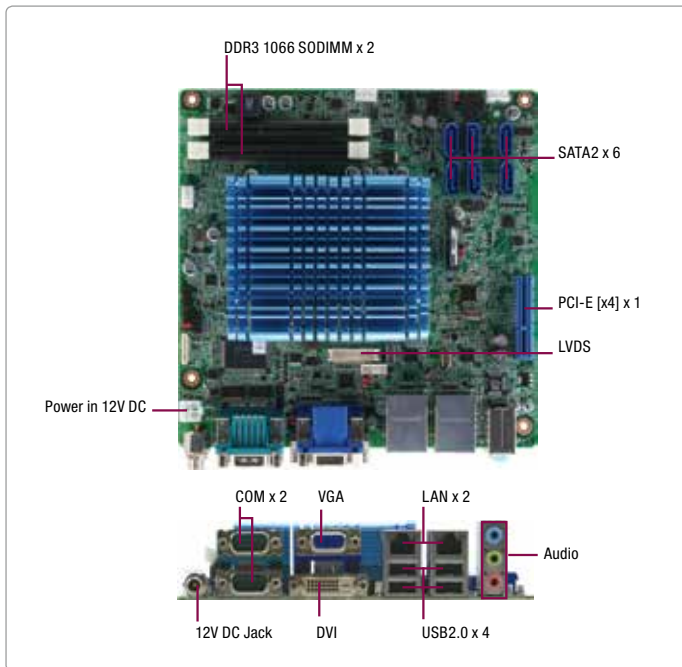


Embedded Motherboard with Intel® Atom™ D2550 B3 Processor



Features

- Intel® Atom™ D2550 B3 Processor
- Intel® ICH10R Chipset
- 204-Pin Dual-Channel DDR3 1066 MHz SODIMM x 2, Up to 4 GB
- Integrated Intel® Graphics Engine Supports Dual View by VGA, DVI
- Realtek RTL 8111E, Gigabit Ethernet x 2
- SATA 3.0 Gb/s x 6
- USB2.0 x 8, COM x 2



Specifications

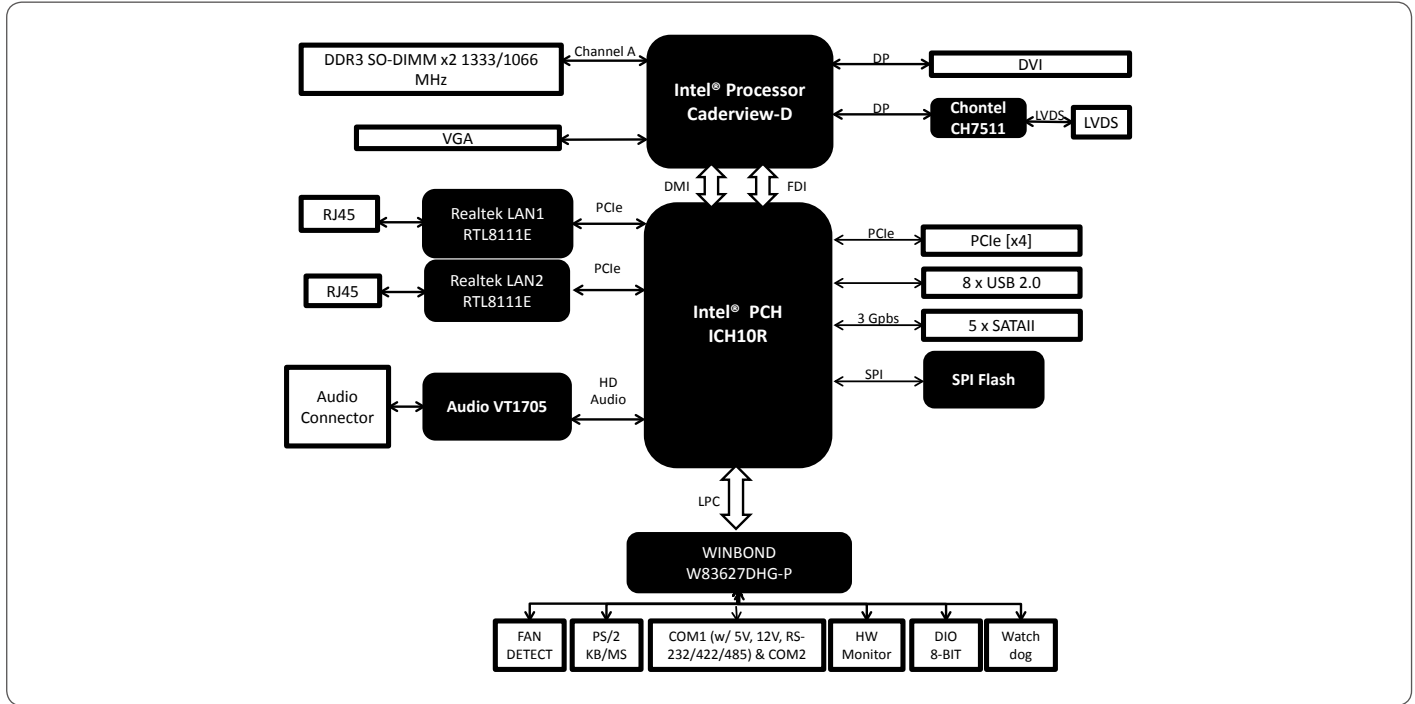
System	
Form Factor	Mini-ITX
Processor	Intel® Atom™ D2550 B3 Processor Dual Core 1.86 GHz
System Memory	204-pin Dual-Channel DDR3 1066 MHz SODIMM x 2, up to 4 GB
Chipset	Intel® ICH10R
I/O Chipset	Winbond W83627DHG-P
Ethernet	Realtek® 8111E, Gigabit Ethernet, RJ-45 x 2
BIOS	AMI BIOS - 32 MB ROM
Wake on LAN	Yes
Watchdog Timer	System Reset: 1~255 steps programmable
H/W Status Monitoring	Supports System temperature, Voltage, and Cooling fan status monitoring
Expansion Interface	PCI-E[x4] x 1
Power Requirement	+12V 4-pin connector x 1
Power Consumption (Typical)	Intel® Atom™ D2550 1.86 GHz, DDR3 1333 MHz 2 GB, 1.22A@ +12V/Full loading 14.64W
Board Size	6.7" x 6.7" (170 mm x 170 mm)
Gross Weight	1.32 lb(0.6 kg)
Operation Temperature	32 °F ~ 140 °F (0 °C ~ 60 °C)
Storage Temperature	-40 °F ~ 176 °F (-40 °C ~ 80 °C)
Operation Humidity	0% ~ 90% R/H, non-condensing
MTBF (Hours)	107,000
Display	
Chipset	Intel® Atom™ D2550 B3 Processor
Memory	Shared System Memory up to 384 MB
Resolution	Up to 1920 x 1200 @60 Hz for VGA Up to 1920 x 1080 @60 Hz Dual Channel LVDS Up to 1920 x 1200 @60 Hz for DVI"
Output Interface	VGA, DVI, LVDS
I/O	
Storage	SATA 3.0 Gb/s x 6
Serial Port	RS-232 x 1, RS-232/422/485 x 1
Universal Serial Bus	USB 2.0 x 4 with Type A connectors USB 2.0 x 4 with Pin Headers
Digital I/O	8-bit programmable (4-in/4-out)
PS/2 port	Mini-Din PS/2 K/B and Mouse x 1
Audio	Line-in, Mic-in, Line-out

Packing List

- **M20CV10000**
(TF)Metal, Sus, I/O Shield, Rev.0.0, EMB-CV1, Kuangying, IOA-02175-01
- **1709070800**
(TF)SATA Cable, 7P Pitch 1.27mm, 80cm, w/Lock
- **1702151201**
(TF)Power Cable, 4P 2.5mm Housing, 15P SATA (F), 12cm, for FWS-2150
- **9657666600**
(TF)Accessory, for All Series Jumper
- **Product DVD**
- **EMB-CV2**

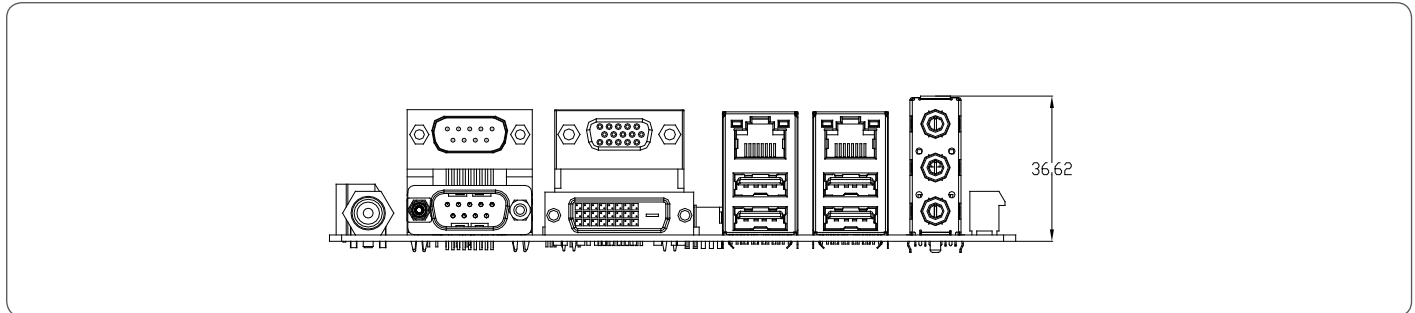
EMB-CV2

Block Diagram



Dimension

Unit: mm



Ordering Information

Part Number	CPU	RAM	Fan/Fanless	Display	Storage	LAN	USB	RS-232	RS-232/422/485	KB/MS	Expansion Slot	Power	Temp.
EMB-CV2-A10	Intel® Atom™ D2550	SODIMM	Fanless	VGA, DVI, LVDS	SATA x 6	GbE x 2	USB2.0 x 8	1	1	1	PCI-E [x4] x 1	+12V/DC	0°C ~ 60°C

Optional Accessories

- **1709070800**
(TF)SATA CABLE, 7P Pitch 1.27mm, 80cm, W/Lock
- **1702151201**
(TF)Power Cable, 4P 2.5mm Housing, 15P SATA (F), 12cm, for FWS-2150
- **9657666600**
(TF)Accessory, for All Series Jumper
- **1709100201**
(TF)USB Cable, 20cm 2.0mm, w/Bracket
- **1701100206**
(TF)Flat Cable, 9P DB 9P MALE, 10P 2.00mm Pitch Housing, 20cm