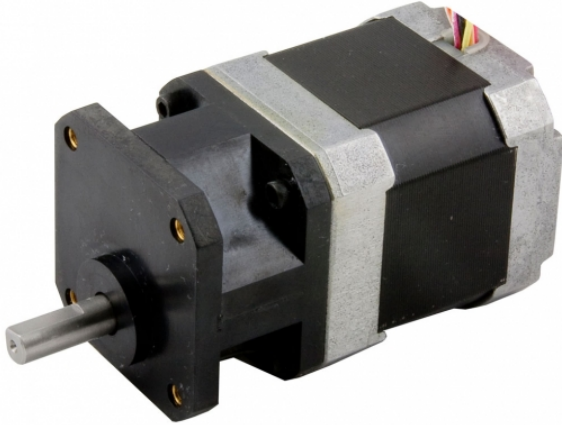


## 17068-2-05S

NEMA 17 Stepper Gearmotor

1pc. - 281.00  
50pc. - 210.75



### **Product Features**

- *Cost effective gearmotor*
- *NEMA 17 step motor with gearhead*
- *5:1 ratio amplifies step motor torque*
- *Offset parallel output shaft*
- *High torque design*
- *Strong composite gearhead body*



## Description

### **Product Description:**

The 17068-2-05S stepper gearmotor is a NEMA 17 step motor and 5:1 gearhead pre-assembled for ease-of-use and greater output torque than the step motor by itself.





A double-shaft version of this gearmotor, part number 17068-2-05D, is also available. Please [call or email](#) for price and delivery.

## Specifications

|                                     |                                 |
|-------------------------------------|---------------------------------|
| <b>Part Number:</b>                 | 17068-2-05S                     |
| <b>Frame Size:</b>                  | NEMA 17                         |
| <b>Motor Type:</b>                  | Gearmotor                       |
| <b>Motor Length:</b>                | 2.28 inches                     |
| <b>Number of Lead Wires:</b>        | 8                               |
| <b>Lead Wire Configuration:</b>     | flying leads, no connector      |
| <b>Lead Wire/Cable Length:</b>      | 12 inches inches                |
| <b>Lead Wire Gauge:</b>             | 26 AWG                          |
| <b>Unipolar Holding Torque:</b>     | 105 oz-in                       |
| <b>Bipolar Holding Torque:</b>      | 105 oz-in                       |
| <b>Step Angle:</b>                  | 1.8 deg                         |
| <b>Bipolar Series Current:</b>      | 0.67 A/phase                    |
| <b>Bipolar Series Resistance:</b>   | 8.4 Ohms/phase                  |
| <b>Bipolar Series Inductance:</b>   | 11.2 mH/phase                   |
| <b>Bipolar Parallel Current:</b>    | 1.34 A/phase                    |
| <b>Bipolar Parallel Resistance:</b> | 2.1 Ohms/phase                  |
| <b>Bipolar Parallel Inductance:</b> | 2.8 mH/phase                    |
| <b>Unipolar Current:</b>            | 1.10 A/phase                    |
| <b>Unipolar Resistance:</b>         | 4.2 Ohms/phase                  |
| <b>Unipolar Inductance:</b>         | 2.8 mH/phase                    |
| <b>Rotor Inertia:</b>               | 6.00E-04 oz-in-sec <sup>2</sup> |
| <b>Integral Gearhead:</b>           | Yes                             |
| <b>Weight:</b>                      | 0.96 lbs                        |
| <b>Storage Temperature:</b>         | -40 to 70 °C                    |
| <b>Operating Temperature:</b>       | -20 to 50 °C                    |
| <b>Insulation Class:</b>            | Class B (130 °C)                |

|                      |         |
|----------------------|---------|
| Maximum Radial Load: | 4.5 lbs |
| Maximum Thrust Load: | 3.5 lbs |
| Radial Play:         | 0.002   |
| End Play:            | 0.010   |

## Downloads

|                   |  |
|-------------------|--|
| Family Datasheet: |  <a href="#">StepMotorWiring-8-lead-striped.pdf</a>   |
| Datasheet:        | <a href="http://s3.amazonaws.com/applied-motion-pdf/17068-2-05S.pdf">http://s3.amazonaws.com/applied-motion-pdf/17068-2-05S.pdf</a>  |
| 2D Drawing:       |  <a href="#">17-2-05_RevB.pdf</a><br> <a href="#">HT17-068P_RevE.pdf</a> |
| 3D Drawing:       |  <a href="#">17HT33_17068-2-05S.igs</a>   |

## Pricing

| 17068-2-05S<br>Part No. w/ Single Shaft |   |
|---|---|
| 1pc.                                    | \$281.00  |
| 25pc.                                   | \$241.66  |
| 50pc.                                   | \$210.75  |
| 100pc.                                  | <a href="#">Request a Quote</a> for 100+ piece pricing. |