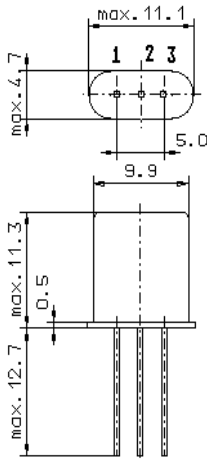


Specification for monolithic crystal filter:

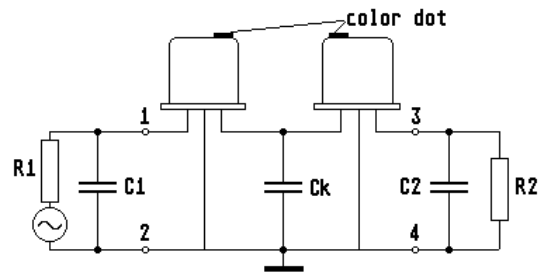
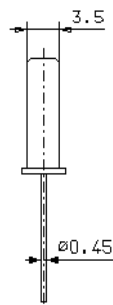
**MQF 10.7-0750/02**

1. General

1.1. Package: 2 x GH 3 ( each filter consists of a pair of two matched duals )



GH3



- |                                   |                  |
|-----------------------------------|------------------|
| 1.2. Type name:                   | MQF 10.7-0750/02 |
| 1.3. Number of poles:             | 4                |
| 1.4. Operating temperature range: | -40°C to +85°C   |
| 1.5. Storage temperature range:   | -55°C to +85°C   |

2. Electric values

2.1. Nominal centre frequency  $f_0$ : 10.7 MHz

2.2. Pass band

- |   |                                    |
|---|------------------------------------|
| 2.2.1. Bandwidth between 3 dB - frequencies:                                | $\geq f_0 \pm 3.75$ kHz            |
| 2.2.2. Ripple:  | $\leq 1.0$ dB at $f_0 \pm 3.0$ kHz |
| 2.2.3. Insertion loss:<br>( measured on smallest attenuation in pass band ) | $\leq 2.5$ dB                      |

2.3. Stop band

- |                                       |              |
|---------------------------------------|--------------|
| 2.3.1. $f_0 \pm 14$ kHz               | $\geq 40$ dB |
| 2.3.2. $f_0 + 300$ kHz.....+ 1000 kHz | $\geq 65$ dB |
| 2.3.3. $f_0 - 200$ kHz.....- 1000 kHz | $\geq 80$ dB |

2.4. Terminating impedance ( input and output ): 1800  $\Omega$  // 3.5 pF

2.4.1. Coupling capacitance  $C_c$ : 12 pF

3. Marking: manufacturer, date code  
10.7-0750/02

4. Environment conditions: Corresponding to Vectron standard CF001

Edited by: \_\_\_\_\_ date: \_\_\_\_\_ name: \_\_\_\_\_