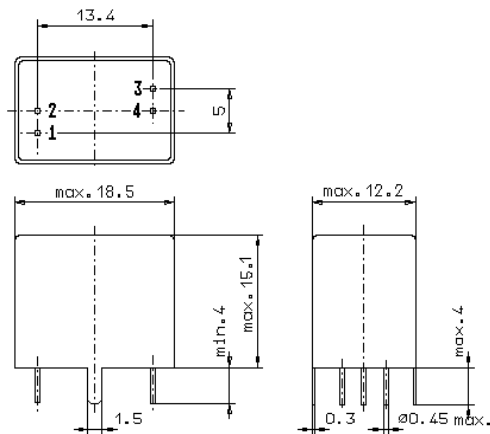


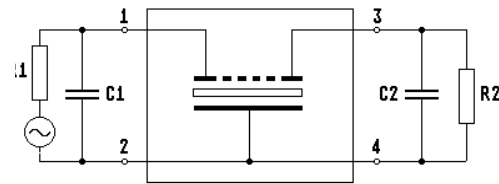
Specification for monolithic crystal filter: **MQF 10.0-1900/04**

1. General

1.1. Package:



GV5.1



- | | |
|-----------------------------------|------------------|
| 1.2. Type name: | MQF 10.0-1900/04 |
| 1.3. Number of poles: | 8 |
| 1.4. Operable temperature range: | -30°C to +80°C |
| 1.5. Operating temperature range: | -20°C to +70°C |
| 1.6. Storage temperature range: | -55°C to +80°C |

2. Electric values

- | | |
|---|--|
| 2.1. Nominal centre frequency fo: | 10.0 MHz |
| 2.2. Pass band | |
| 2.2.1. Bandwidth between 6 dB - frequencies: | $\geq f_o \pm 9.5$ kHz |
| 2.2.2. Ripple: | ≤ 2.0 dB at $f_o \pm 7.0$ kHz |
| 2.2.3. Insertion loss: | ≤ 2.0 dB |
| (measured on smallest attenuation in pass band) | |
| 2.3. Stop band | |
| 2.3.1. $f_o \pm 15$ kHz | ≥ 40 dB |
| 2.3.2. $f_o \pm 18$ kHz | ≥ 60 dB |
| 2.3.3. Alternate attenuation: | ≥ 90 dB |
| 2.4. Terminating impedance (input and output): | $9000 \Omega \pm 10 \% // 0$ pF ± 2 pF |
| 3. Marking: | manufacturer, date code
10.0-1900/04 |
| 4. Environment conditions: | Corresponding to Vectron CF001 |

Edited by: _____ date: _____ name: _____