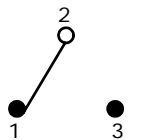
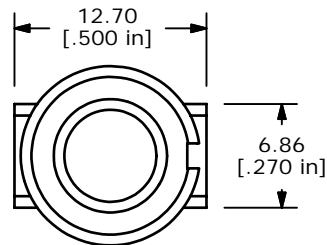


P.C. MOUNTING

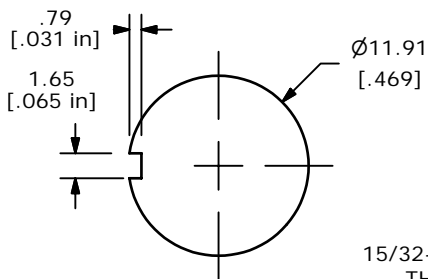


CIRCUIT: SPDT



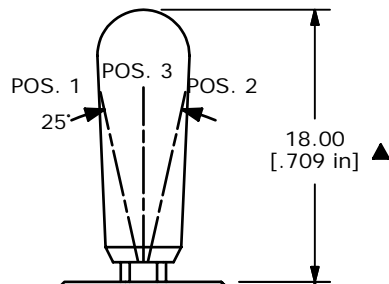
SWITCH FUNCTION		
POS. 1	POS. 1	POS. 1
(ON)	OFF	(ON)
2-3	OPEN	2-1

(ON)=MOMENTARY



PANEL MOUNTING

15/32-32 UNS-2A  
THREADS



6.09  
[.240 in]

18.00  
[.709 in] ▲

11.38  
[.448 in] ▲

8.89  
[.350 in]

18.70  
[.736 in] ▲

1.27  
[.050 in] TYP.

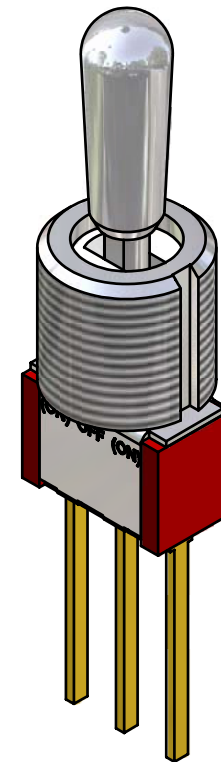
4.70  
[.185 in]

.76  
[.030 in]

E-SWITCH  
MARKING ON  
OPPOSITE SIDE

EPOXY SEAL

(ON) OFF (ON)



ISOMETRIC

NOTE:

1. ALL DIMENSIONS IN MM [INCH]
2. GENERAL TOLERANCE: X.X=±0.4  
X.XX=±0.25
3. TERMINAL NUMBERS FOR REF ONLY
- ▲ 4. PLATING MATERIAL: GOLD
5. RATING: 0.4 (VA) Max. @20V Max.
6. ELECTRIC LIFE: 40,000 make-and-break cycles at full load.
7. INSULATION RESISTANCE: 1,000 Mega-ohm min.
8. DIELECTRIC STRENGTH: 1,000 V RMS @sea level.
9. OPERATING TEMP.: -30°C to 85°C
10. ▲ DENOTES CRITICAL PARAMETER.
11. 2002/95/EC (ROHS) COMPLIANT

**E-SWITCH®**

B	16166	UPDATE DWG TO CURRENT STANDARDS	6/20/06	CT
A	14233	RELEASED FOR PRODUCTION	8/16/04	AR
REV	PCR NO	DESCRIPTION	DATE	BY

TITLE 100SP4T8B13M51RE

SCALE	DATE	DR	DWG	REV
2:1	8/16/2004	AR	T114042	B

THE INFORMATION CONTAINED IN THIS DOCUMENT IS PROPRIETARY TO E-SWITCH AND IS NOT TO BE COPIED OR TRANSFERRED