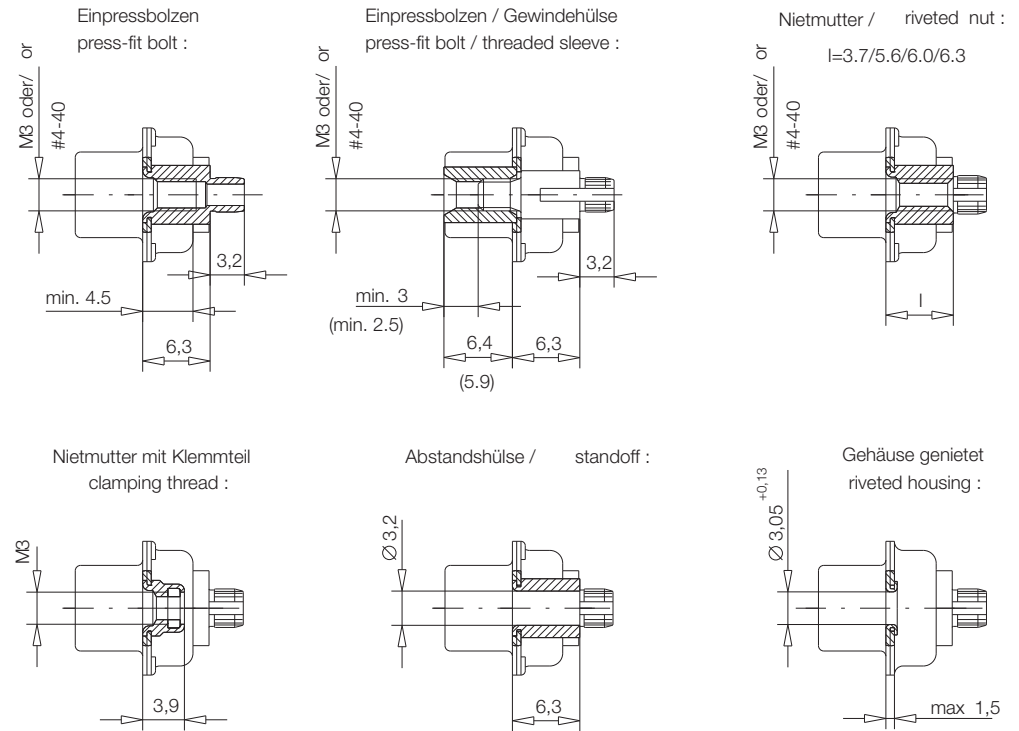


Schnitt A-A / cross section A-A



| | |
|-----------------------------------|---|
| Ident-Nr. / Part No. : | Refer to table on page 2 |
| Polzahl / No. of contacts : | Refer to table on page 2 |
| Anschlußart / Terminal Type : | Pressfit |
| Anschlußlänge / Terminal Length : | 6.3 mm |
| Bauart / Type : | 3WK3 |
| Anforderungsstufe / Class : | 201=0.8µm (30 µin) Au CONTACT, GOLD/LEAD TERMINAL |
| Aufdruck / Logo : | ERNI |
| Zubehör / Accessory : | Refer to table on page 2 |
| Sonderausführung / Special : | Refer to table on page 2 |

Leiterplattenbohrbild 144058 / Board hole pattern 144058
 Schichtaufbau im metallisierten Loch / metal plating of plated-through hole
 für Einpresskontakt Zeichnung 114110 / for press-fit contact drawing 114110
 für Einpressbolzen Zeichnung 114109 / for press-fit bolt drawing 114109

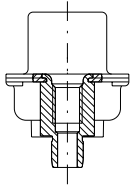
| | | | | |
|--|--|--------------------------|---|---------------|
| Information: | Tolerances | All Dimensions in mm | Scale | 2:1 |
| | All rights reserved. Only for information. To insure that this is the latest version of this drawing, please contact one of the ERNI companies before using. | | Designation TMC-S 3WK3-EP36-6,3-3 TMC-S 3WK3-EP36-6,3-3 | |
| Subject to modification without prior notice. Drawing will not be updated. | | www.ERNI.com | | 054989 |
| Index | Date | M:00022947.SZN | TMCS | |

Ordering Information

D-Sub Connector High Power Pressfit Vertical Female Assembly Height 6.3 mm

Number of Pins

3WK3

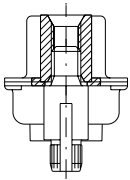


Accessory Termination Side: Pressfit bolt M3

134454

Accessory Termination Side: Pressfit bolt #4-40

134455



Accessory Mating Side: Threaded sleeve M3 Accessory Termination Side: Pressfit bolt

134510

Accessory Mating Side: Threaded sleeve #4-40 Accessory Termination Side: Pressfit bolt

134511

Ordering Information press-in tools

Number of Pins

Upper Tool with Quick
Change Device

Lower Tool

3WK3

220505

220147