

DIGITRON SEMICONDUCTORS

UES1304 – UES1306

RECTIFIERS
HIGH EFFICIENCY, 5A

MAXIMUM RATINGS

Peak Inverse Voltage:	UES1304 UES1305 UES1306	200V 300V 400V
Maximum Average D.C. Output Current: I_o @ T _A = 25°C (Free Air) @ T _L = 50°C, L = 3/8"		3A 5A
Surge Current @ 8.3ms:		70A
Thermal Resistance @ L = 3/8":		20°C/W
Operating and Storage Temperature Range:		-55°C to +150°C

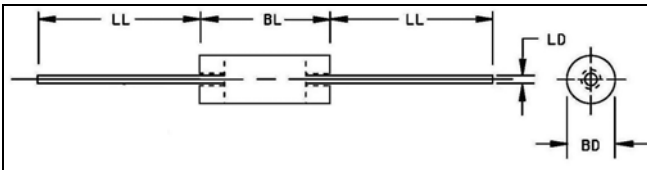
ELECTRICAL CHARACTERISTICS

Part number	PIV	Maximum forward voltage		Maximum reverse current		Maximum reverse recovery time
		T _J = 25°C	T _J = 100°C	T _J = 25°C	T _J = 100°C	
UES1304	200V	1.25V @ 3A tp = 300µS	1.15V @ 3A tp = 300µS	20µA	500µA	50ns
UES1305	300V					
UES1306	400V					

*Measured in circuit I_F = 1/2A, I_R 1.0A, I_{REC} = 1/4A

MECHANICAL CHARACTERISTICS

Marking	Body Painted, Alpha-Numeric
Polarity	Cathode Band
Weight	1.5 grams (approximate)



Dim	Inches		Millimeters	
	Min	Max	Min	Max
BD	-	0.135	-	3.429
BL	-	0.250	-	6.350
LD	0.038	0.042	0.965	1.067
LL	0.975	-	24.765	-

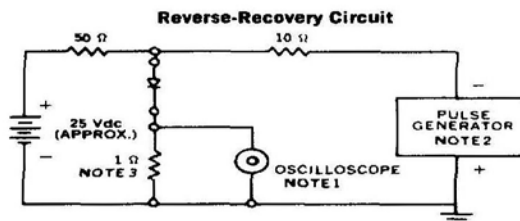
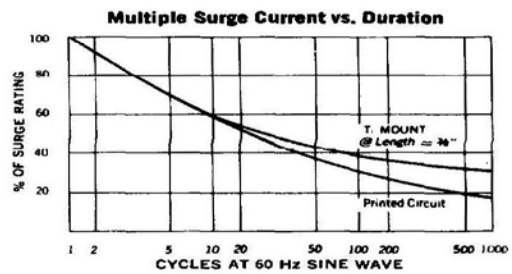
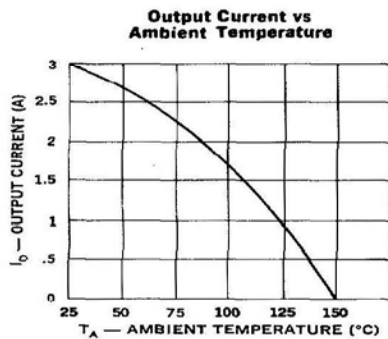
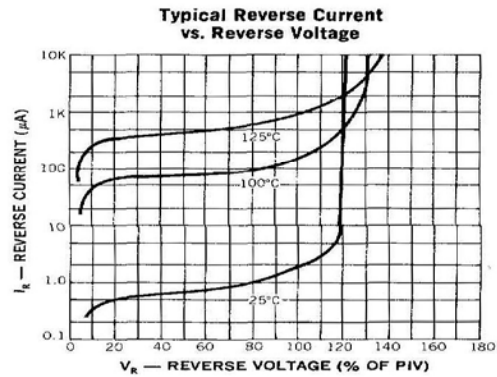
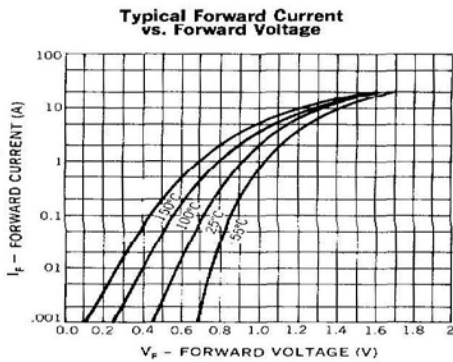
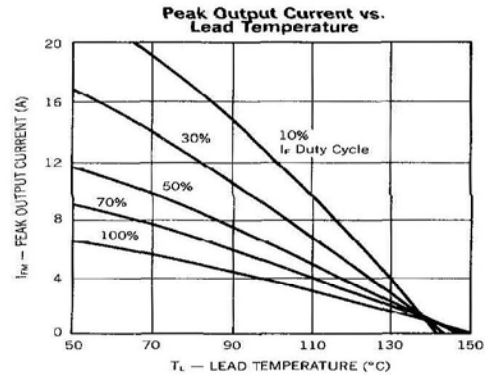
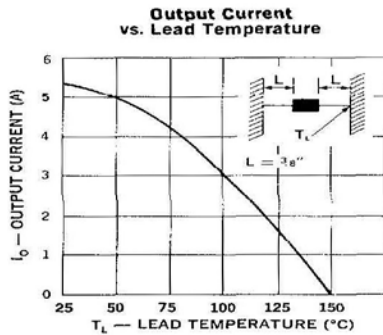
Available Non-RoHS (standard) or RoHS compliant (add PBF suffix).

Available as "HR" (high reliability) screened per MIL-PRF-19500, JANTX level. Add "HR" suffix to base part number.

DIGITRON SEMICONDUCTORS

UES1304 – UES1306

RECTIFIERS
HIGH EFFICIENCY, 5A



- NOTES:**
1. Oscilloscope: Rise time $\leq 3\text{ns}$; Input impedance = 50Ω .
 2. Pulse Generator: Rise time $\leq 8\text{ns}$; source impedance 10Ω .
 3. Current viewing resistor, non-inductive, coaxial recommended.