

MABA-010721-CF1670

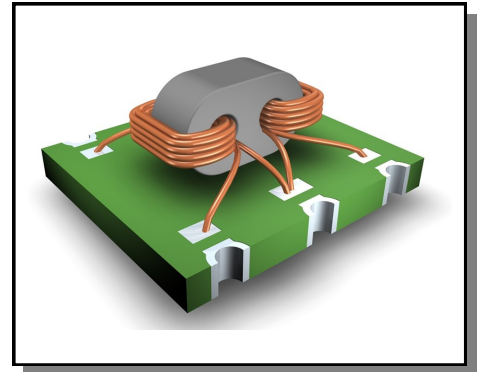


Transformer, 1:1dB
5 MHz - 400 MHz

Rev. V2

Features

- ◆ 1:1dB Transformer with center tap
- ◆ Surface mount
- ◆ Available on tape and reel
- ◆ 260°C reflow compatible
- ◆ RoHS Compliant and Pb free
- ◆ Excellent temperature stability



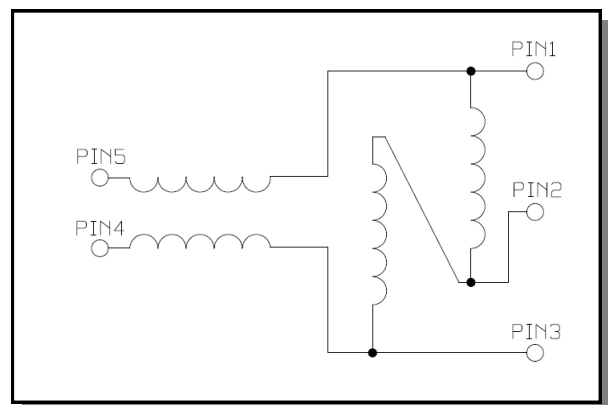
Electrical Specifications: $Z_0 = 75\Omega$, $T_A = 25^\circ\text{C}$, $P_{in} = 0\text{dBm}$

Parameter	Conditions	Units	Min	Typ	Max
Frequency Range		MHz	5		400
Impedance		Ω	-	75	
Insertion Loss 1 (Pin5 to pin1)	5 - 400 MHz	dB	-	0.5	0.6
Insertion Loss 2 (pin5 to pin3)	5 - 400 MHz	dB	-	0.4	0.6
Amplitude Balance	5 - 400 MHz	dB	-	0.08	± 0.5
Phase Balance	5 - 400 MHz	dB	-	0.4	± 2.0
Input Return Loss (pin5)	5 - 200 MHz	dB	20	28	-
	200 - 400 MHz	dB	19	22	-

Pin Configuration

Pin No.	Function
1	Output 1
2	Not connected
3	Output 2
4	Ground
5	Input

Schematic



1

ADVANCED: Data Sheets contain information regarding a product M/A-COM Technology Solutions is considering for development. Performance is based on target specifications, simulated results, and/or prototype measurements. Commitment to develop is not guaranteed.
PRELIMINARY: Data Sheets contain information regarding a product M/A-COM Technology Solutions has under development. Performance is based on engineering tests. Specifications are typical. Mechanical outline has been fixed. Engineering samples and/or test data may be available. Commitment to produce in volume is not guaranteed.

• **North America** Tel: 800.366.2266 • **Europe** Tel: +353.21.244.6400
 • **India** Tel: +91.80.43537383 • **China** Tel: +86.21.2407.1588
 Visit www.macomtech.com for additional data sheets and product information.

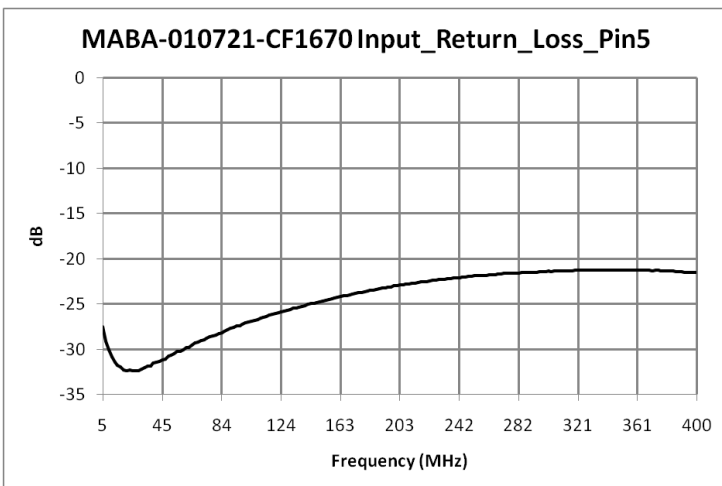
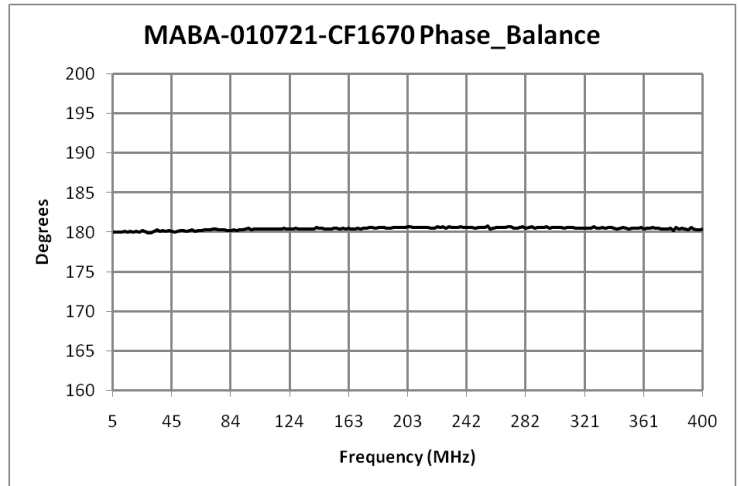
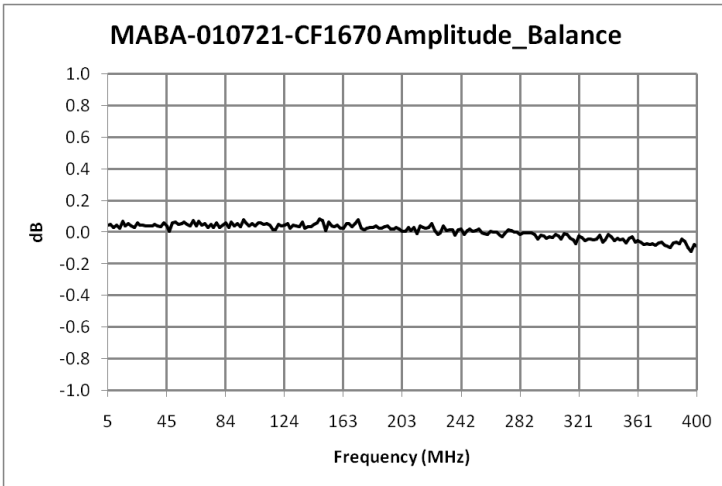
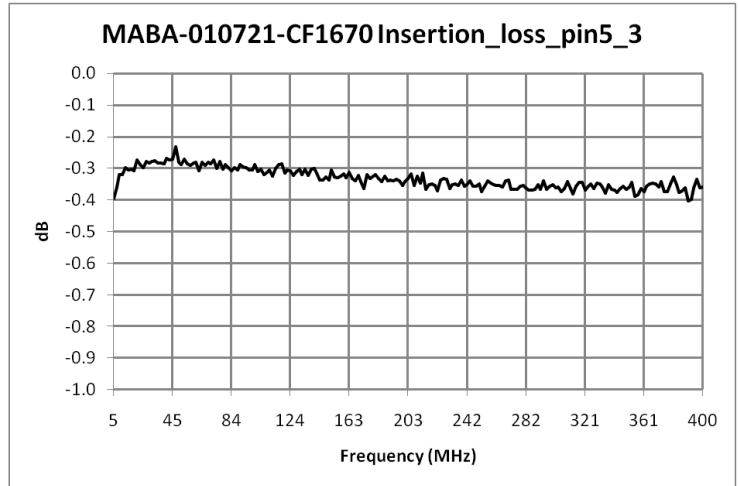
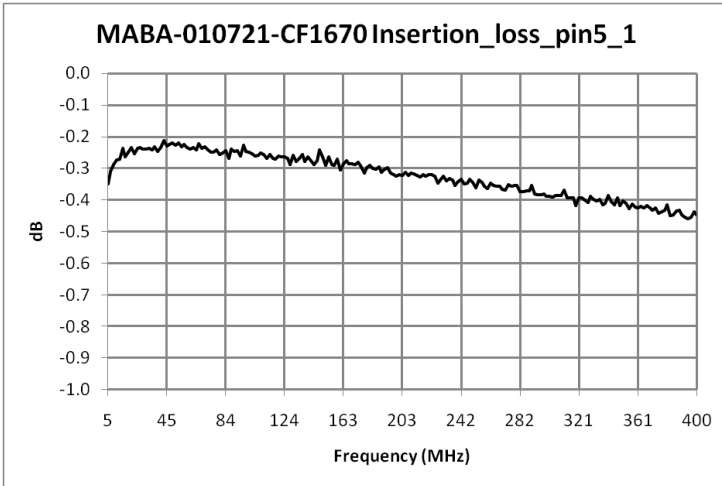
M/A-COM Technology Solutions Inc. and its affiliates reserve the right to make changes to the product(s) or information contained herein without notice.

MABA-010721-CF1670



Transformer, 1:1dB
5 MHz - 400 MHz

Rev. V2



ADVANCED: Data Sheets contain information regarding a product M/A-COM Technology Solutions is considering for development. Performance is based on target specifications, simulated results, and/or prototype measurements. Commitment to develop is not guaranteed.
PRELIMINARY: Data Sheets contain information regarding a product M/A-COM Technology Solutions has under development. Performance is based on engineering tests. Specifications are typical. Mechanical outline has been fixed. Engineering samples and/or test data may be available. Commitment to produce in volume is not guaranteed.

• **North America** Tel: 800.366.2266 • **Europe** Tel: +353.21.244.6400
 • **India** Tel: +91.80.43537383 • **China** Tel: +86.21.2407.1588
 Visit www.macomtech.com for additional data sheets and product information.

M/A-COM Technology Solutions Inc. and its affiliates reserve the right to make changes to the product(s) or information contained herein without notice.

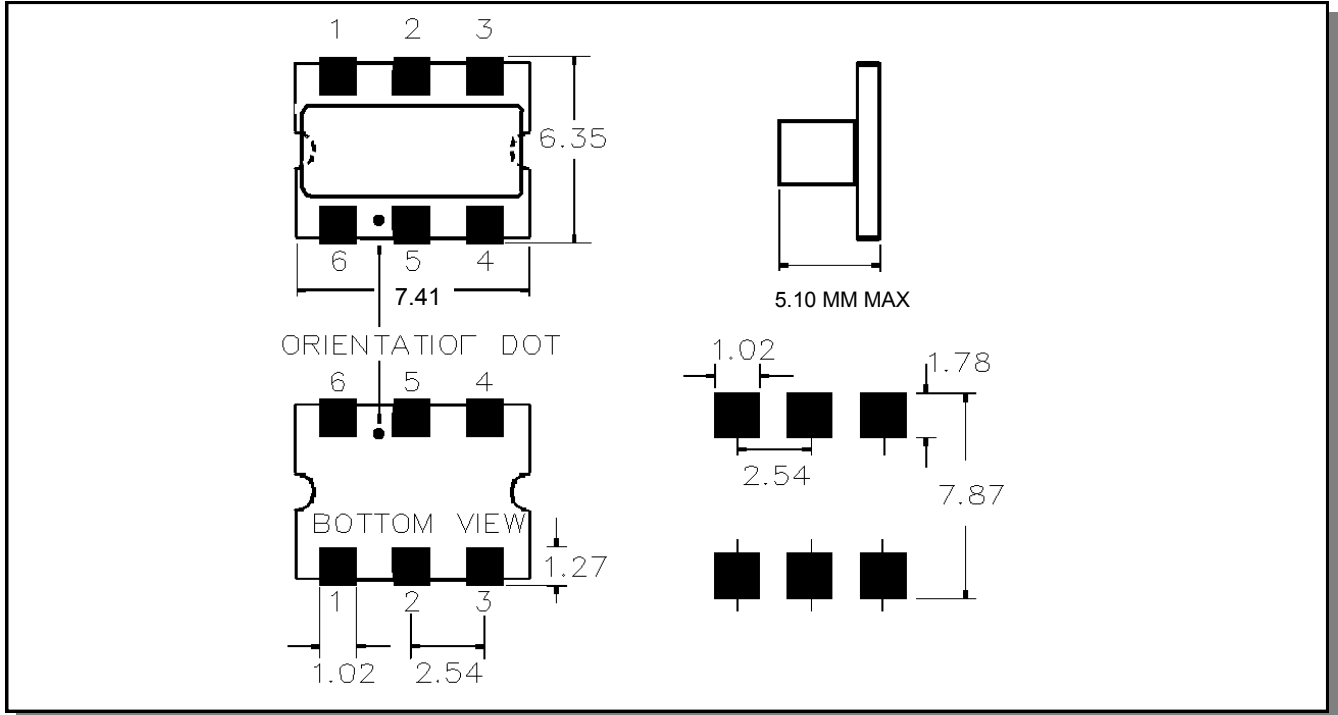
MABA-010721-CF1670



Transformer, 1:1dB
5 MHz - 400 MHz

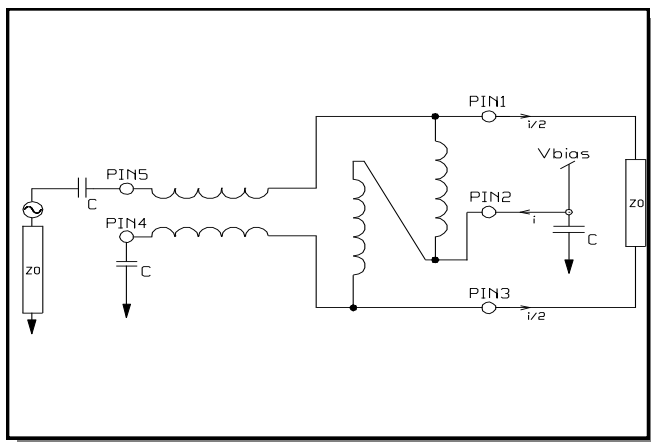
Rev. V2

Outline Drawing

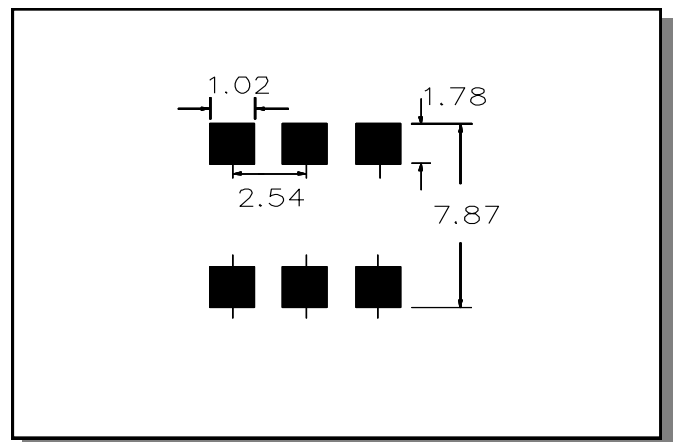


1. Dimensions in mm.
2. Tolerance: ± 0.2 mm unless otherwise noted.
3. Model number and lot code are printed on the reel.
4. Finish: ENIG on both sides, 0.05 to 0.1 μ m gold over 3 to 6 μ m nickel

Application Circuit



Recommended Footprint



MABA-010721-CF1670



Transformer, 1:1dB
5 MHz - 400 MHz

Rev. V2

Tape & Reel Information

Parameter	Units	Value
Qty per reel	-	900
Reel Size	mm	330
Tape Width	mm	16.00
Pitch	mm	12.00
Ao	mm	6.6
Bo	mm	7.9
Ko	mm	5.2
Orientation	-	F15

Reference Application Note ANI-019 for orientation

Ordering Information

Part Number	Description
MABA-010721-CF1670	Tape & Reel
MABA-010721-CF16TB	Customer Evaluation Board

Recommended Maximum Ratings

Parameter	Units	Min	Max
Input Power	mW		250
DC Current	mA		1200
Operating Temperature Range	°C	-40	+85
Storage Temperature Range	°C	-55	+125

Full temperature plots available on request