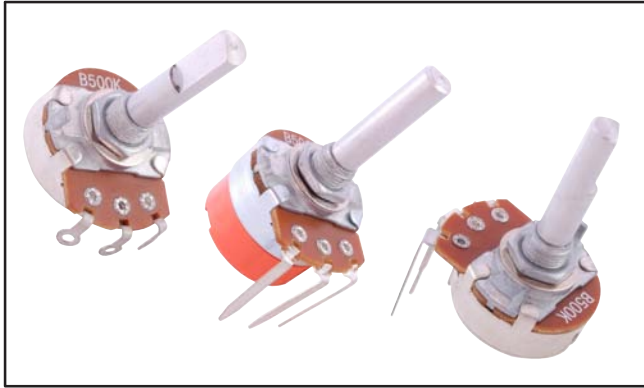


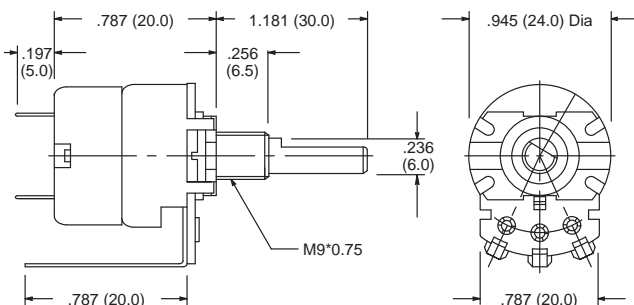
## Features

- Available in Linear and Audio Taper
- Switch Type Available in Both Audio and Linear Taper
- Solder Lug and Combination Type Terminals
- Perfect for Consumer Electronics Applications



NTE Part No.	Value (Ohms)	Taper	Switch	Terminal Style	Diag No.
502-0401	500	Linear	No	Combination	P9
502-0402	1K	Linear	No	Solder Lug	P10
502-0403	1K	Audio	Yes	Combination	P11
502-0404	1K	Audio	No	Combination	P9
502-0405	5K	Audio	Yes	Combination	P11
502-0406	5K	Linear	No	Solder Lug	P10
502-0407	5K	Audio	No	Combination	P9
502-0408	10K	Linear	No	Solder Lug	P10
502-0409	10K	Linear	Yes	Combination	P11
502-0410	10K	Audio	No	Combination	P9
502-0411	10K	Audio	Yes	Combination	P11
502-0412	50K	Linear	No	Solder Lug	P10
502-0413	50K	Audio	No	Combination	P9
502-0414	50K	Audio	Yes	Combination	P11
502-0415	100K	Linear	No	Solder Lug	P10
502-0416	100K	Audio	No	Combination	P9
502-0417	100K	Audio	Yes	Combination	P11
502-0418	500K	Linear	No	Solder Lug	P10
502-0419	500K	Linear	Yes	Combination	P11
502-0420	500K	Audio	No	Combination	P9
502-0421	500K	Audio	Yes	Combination	P11
502-0422	1M	Linear	No	Solder Lug	P10
502-0423	1M	Linear	Yes	Combination	P11
502-0424	1M	Audio	No	Combination	P9
502-0425	1M	Audio	Yes	Combination	P11

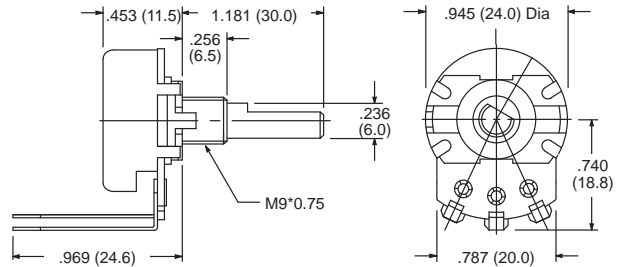
## P11



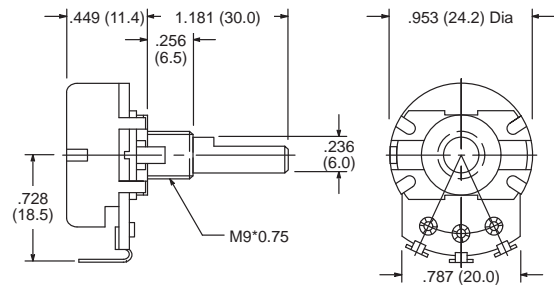
# 24mm Potentiometer

## Potentiometer – 1/2 Watt and 1/4 Watt, 6mm dia. shaft

### P9



### P10



## Specifications

### Electrical

**Resistance Range – Linear Taper:** 500Ω to 1 Meg Ω  
**– Audio Taper:** 1KΩ to 1 Meg Ω

**Resistance Tolerance:** ±20%

**Sliding Noise:** less than 47mV

**Residual Resistance:** ≤ 20Ω (R > 10K)  
 ≤ 10Ω (R ≤ 10K)

**Insulation Resistance:** more than 100 Meg Ω at 500VDC

**Switch Contact Resistance:** less than 0.3Ω

**Operating Voltage:** 250VAC

**Rated Power – Linear Taper:** 0.5W  
**– Audio Taper:** 0.25W

**Switch Rated Power:** 125VAC at 1A

**Withstand Voltage:** 1 minute at 500VAC

### Mechanical

**Total Rotation Angle:** 300° ±10°

**Switch Angle:** 50° ±5°

**Rotation Torque:** 30gf.cm to 200gf.cm

**Switch Action:** 150gf.cm to 4350gf.cm

**Rotation Stopper Strength:** 5Kgf.cm Min

**Shaft Push-Pull Strength:** 7Kgf. Min

**Rotation Life:** 15,000 cycles

**Switch Life:** 10,000 cycles

**Mounting Hole:** .312" (7.9mm) dia,

### Environmental

**Operating Temperature:** -10°C to +70°C

**Resistance to Soldering Heat:** 260°C for 3 seconds