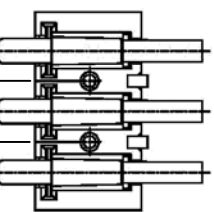
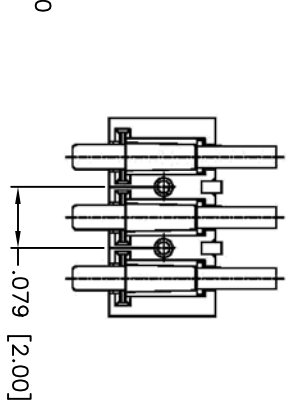
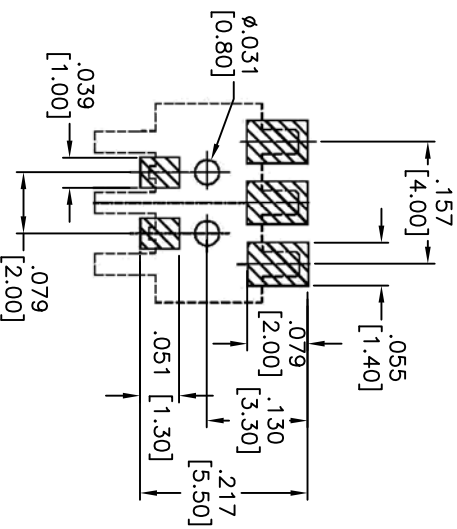
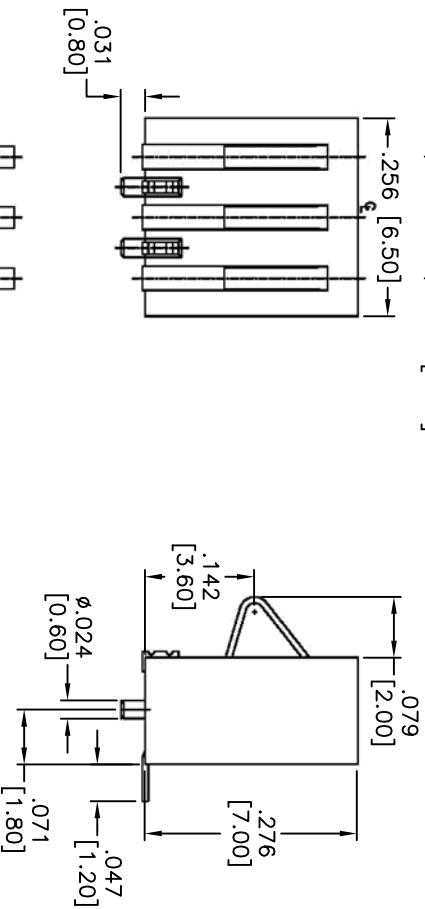
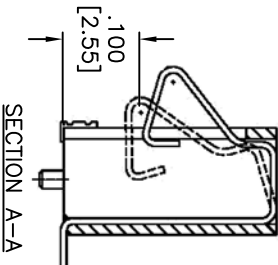
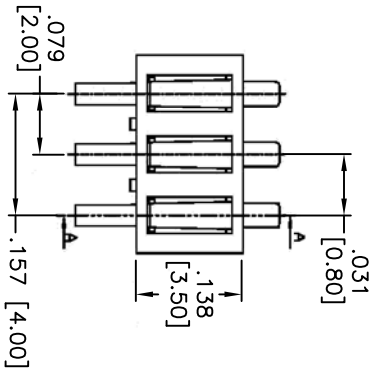


Rev	AWO #	Description	Date	Appr
-		RELEASED	2/10/10	

APPROVED: _____
 DATE: _____ TITLE: _____



RECOMMENDED PCB LAYOUT

SPECIFICATION:

Material:

Insulator: LCP, Rated UL-94V-0
 Insulator color: Black
 Contacts: Copper Alloy

Contact Plating:

Gold over Nickel underplate on contact area, Tin over Copper underplate on SMT tails

Electrical:

Operating Voltage: 250V AC/DC
 Current rating: 1.0 A AC/DC
 Contact resistance: 30 mohms max
 Insulation resistance: 1000 Mohms min
 Dielectric withstanding voltage: 500 VAC / minute
 Environmental:
 Lead free, RoHS compliant.
 Recommended soldering temp: 260°C for 5 sec.



UNLESS OTHERWISE SPECIFIED ALL DIMENSIONS ARE IN INCHES [MM]	
TOLERANCES: EXCEPT AS NOTED	
INCHES	HOLDS
.X ± .10	ØXX ± .10
.XX ± .020	ØXXX ± .015
.XXX ± .015	ØXXXX ± .010
APPROVALS	DATE
DRAWN	2/10/10
CHECKED	
APPROVED	

ADAM TECH

909 Rahway Avenue, Union, NJ 07083
 Phone: 908-687-5000 Fax: 908-687-5710

TITLE: .079 [2.00] PITCH BATTERY CONNECTOR
 SPRING TYPE, SIDE CONTACT, HEIGHT 7.0MM

SIZE	PART NO.	REV.
X	MBC-E-3	-
REF:	S0014TT	SCALE: NTS
		SHEET 1 OF 1