



REV A January 2011

Oscilent Controlled Document

Ordering Code / Part Number	Product Description
821-IF56.25M-D	56.25MHz IF SAW Filter 9.92MHz Bandwidth

Specification Contents

- o Mechanical Dimensions
- o Test Circuit
- o Maximum Ratings
- o Electrical Specification
- o Frequency Response

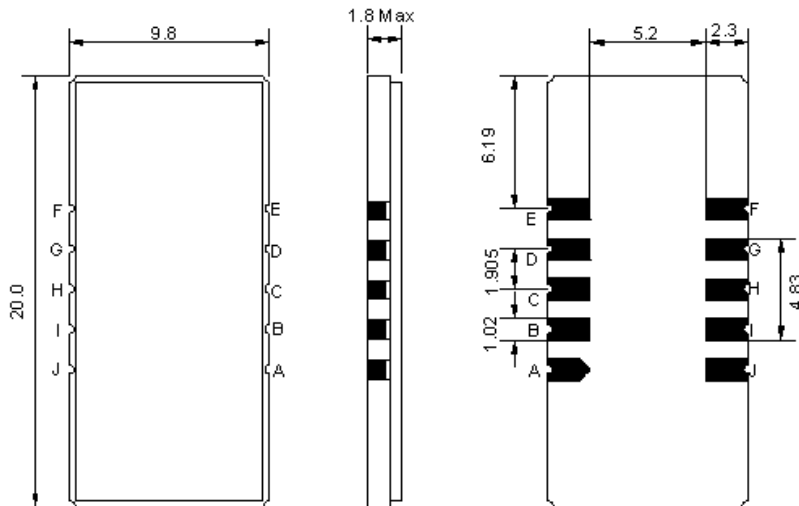
Notes

- o Electrostatic Sensitive Device (ESD) 
- o Avoid excessive ultrasonic exposure
- o Solderability compatible with JEDEC J-STD-020C Pb-free process, 260°C peak reflow temperature
- o This product complies with EU directive 2002/95/EC (RoHS compliance)



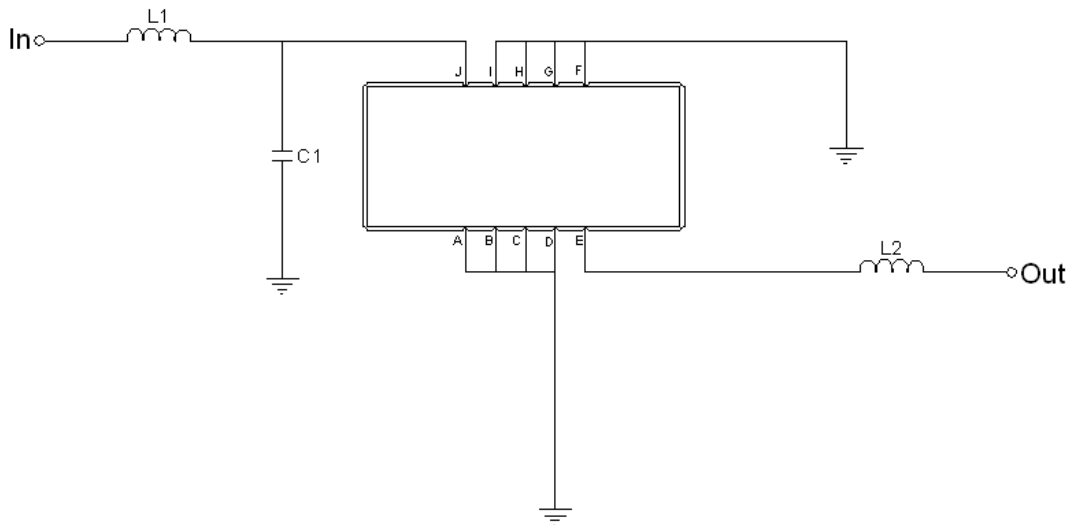


Mechanical Dimensions (mm)



Pin Description	
A, B, C, D, F, G, H, I	Ground
J	Input
E	Output

Test Circuit



Test Fixture & Values	
Input	L1=180nH, C1=20pF
Output	L2=150nH
Source/Load Impedance	50 Ω



Maximum Ratings

Parameters Description	Unit	Minimum	Typical	Maximum
Operating Temperature Range	°C	-30	-	80
Storage Temperature Range	°C	-40	-	85
Maximum DC Voltage	V	-	-	10
Maximum Input Power	dBm	-	-	10
Source Impedance (single ended) ⁽¹⁾	Ω	-	50	-
Load Impedance (single ended) ⁽¹⁾	Ω	-	50	-

Notes: With Matching Network (Ref. Testing Environment Circuit as shown above).
Those impedances could be modified with different impedance values and/or structures, if necessary.

Electrical Specification

Parameters Description	Unit	Minimum	Typical	Maximum
Center Frequency (Fo)	MHz		56.25	
Insertion Loss at Fo	dB	-	18.8	20.5
Amplitude Ripple Variation	dB _{p-p}	-	0.7	1.0
Group Delay Variation	nsec	-	50	100
Absolute Delay at Fo	μsec	-	1.84	-
Temperature Coefficient	ppm/°C	-	-72	-
Bandwidth at -1.0 dB	MHz	9.8	9.92	-
Bandwidth at -3.0 dB	MHz	10.3	10.45	-
Bandwidth at -40.0 dB	MHz	-	12.55	12.7
Bandwidth at -50.0 dB	dB	-	12.77	12.9
Attenuation Rejection	dB	50	55	-



Frequency Response

