

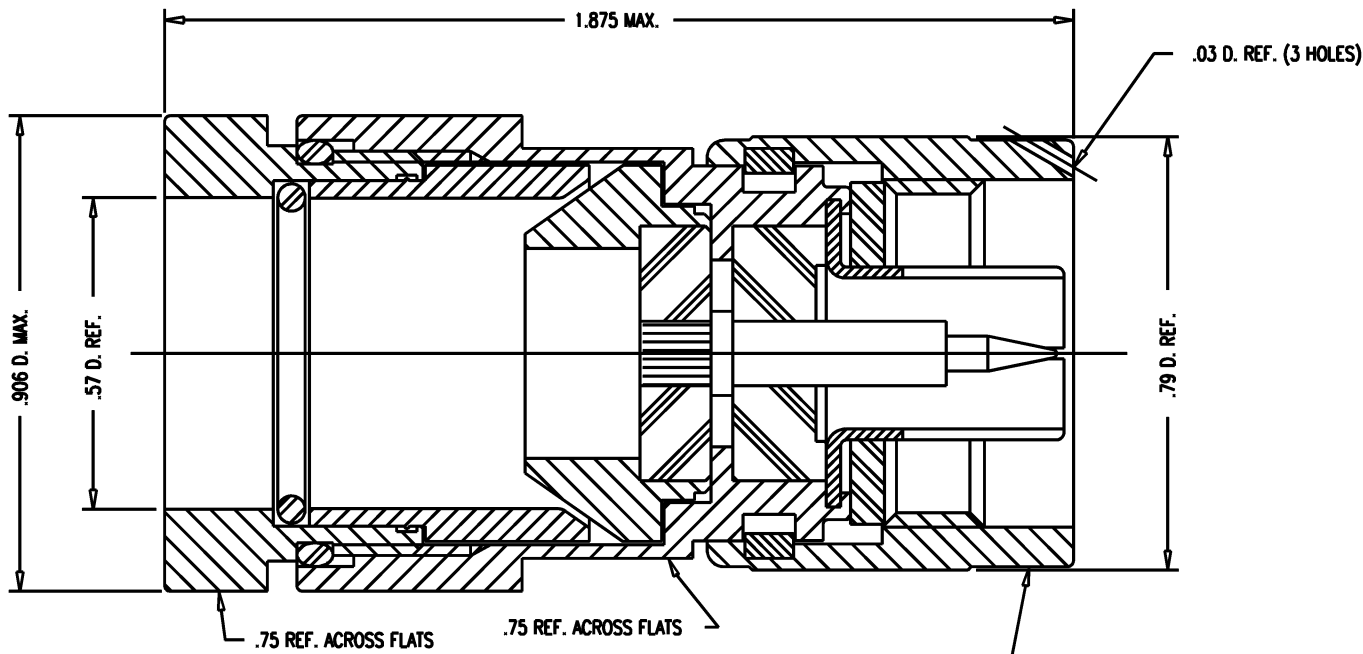
DASH NO.	M CODE	MADE FROM
----------	--------	-----------

# GSD

M39012/01-0015

**REVISIONS**

ISSUE	CHANGES
0	ER 34925 TK 05/10/94



**NOTES:**

- FOR USE WITH M17/78-RG217 CABLE.
- FOR CABLING INSTRUCTIONS SEE 3-539.
- INTERFACE PER MIL-STD-348, FIG. 304-1.
- MATERIAL:  
INSULATORS: TEFLON, ASTM-D-1457  
GASKETS: SIL. RUB., ZZ-R-765  
C-RING: PHOS. BRONZE, QQ-B-750  
ALL OTHER PARTS: BRASS, ASTM-B16
- FINISHES:  
CENTER CONTACT: HARD GOLD PLATE PER MIL-G-45204  
ALL OTHER METAL PARTS: SILVER PLATE PER QQ-S-365
- ELECTRICAL CHARACTERISTICS:  
NOMINAL IMPEDANCE: 50 OHMS  
VOLTAGE RATING: 1000 VRMS  
FREQUENCY RANGE: DC TO 11 GHz

STAMP: 91836 M39012/01-0015  
KINGS 1205-37-5 XX XX

DATE CODE

1205-37-5 JCA0916

SCALE 4:1

APPROX SURFACE AREA

WAS: E-17726

USED ON

REF:

PLUG, N

DRAWN TK 08/27/93

DESIGN VLS 08/27/93

APPR. VLS 08/27/93

**KINGS**  
ELECTRONICS CO., INC.  
TUCKAHOE, NEW YORK 10707

M39012/01-0015

# GSD