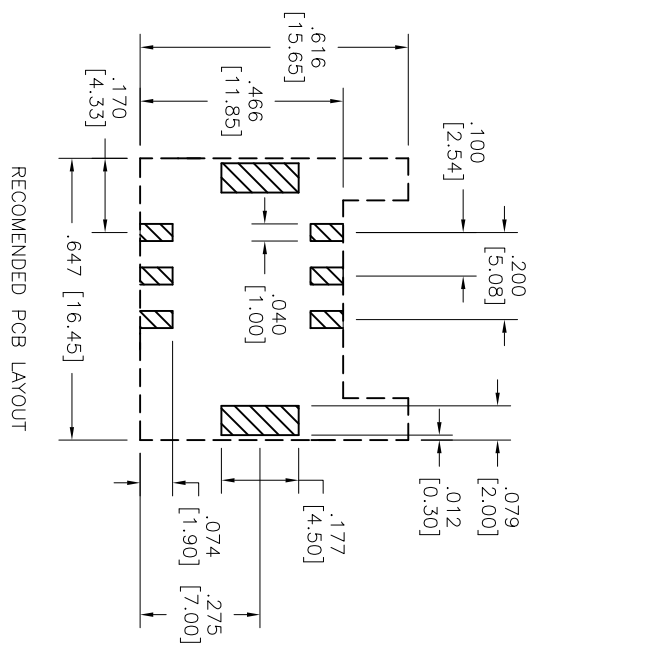


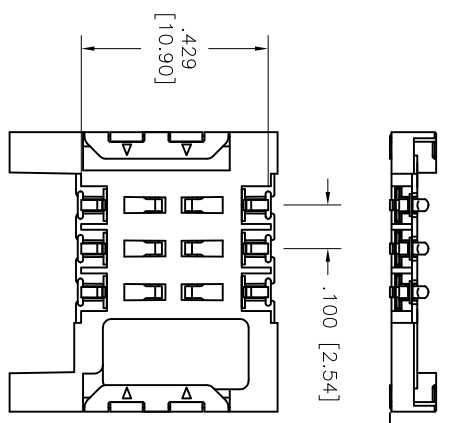
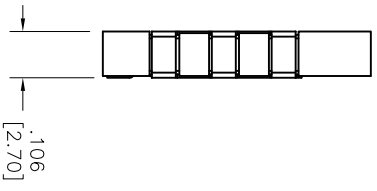
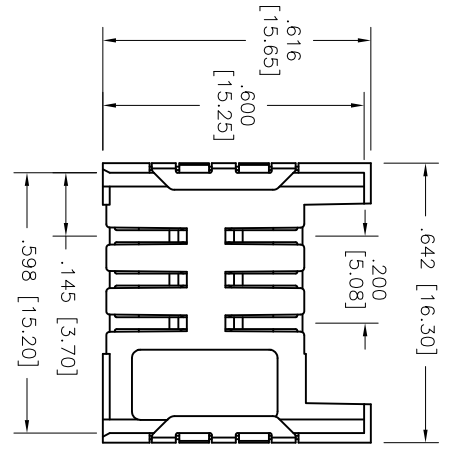
Rev	AWO #	Description	Date	Appr
-		Released	2/18/08	

APPROVED: _____

DATE: _____ TITLE: _____



RECOMMENDED PCB LAYOUT



SPECIFICATIONS:

Material:
 Insulator: Hi-Temp Thermoplastic, rated UL 94V-0
 Insulator color: Black
 Contacts: Copper Alloy

Plating:
 Gold Plating over Nickel underplate on contact area, Tin over Copper underplate on SMT tails.

Electrical:
 Operating voltage: 30 VAC max
 Current rating: 1 Amps max
 Contact resistance: 50 mohms max.
 Insulation resistance: 1,000 Mohms min @ 500 VAC
 Dielectric withstanding voltage: 500 VAC for 1 minute

Mechanical:
 Durability: 10,000 cycles min.

Temperature Rating:
 Operating temperature: -40°C to +85°C

Environmental:
 Lead free, RoHS compliant.
 Recommended soldering temp: 260°C for 5 sec.

PACKAGED ON TAPE & REEL

ADAM TECH

909 Rahway Avenue, Union, NJ 07083
 Phone: 908-687-5000 Fax: 908-687-5710

TITLE: SIM CARD CONNECTOR, 6 POSITION
 SIZE: .106" [2.7mm] HIGH, SURFACE MOUNT
 PART NO.: SCC-B-06-SMT-2-7-1R
 SCALE: NTS

UNLESS OTHERWISE SPECIFIED ALL DIMENSIONS ARE INCHES [MM] TOLERANCES: EXCEPT AS NOTED	
INCHES	HOLES
.X ± .10	ØX ± .10
.XX ± .020	ØXX ± .015
.XXX ± .015	ØXXX ± .010
APPROVALS	DATE
DRAWN	SS
CHECKED	
APPROVED	

