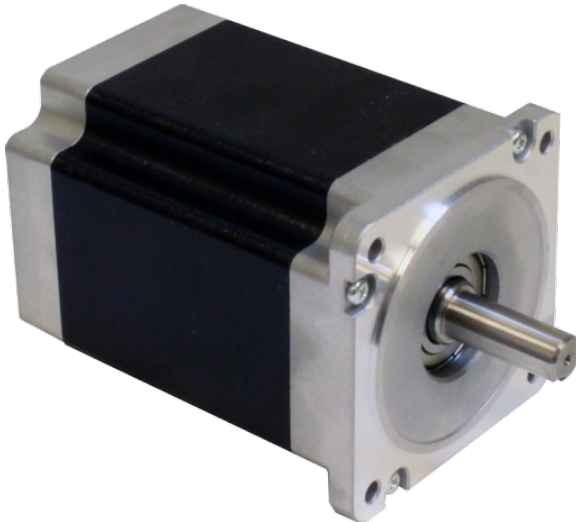


HT34-487

NEMA 34 High Torque Step Motor

1pc. - 474.00
50pc. - 355.50



Product Features

- *2-phase hybrid step motor*
- *High torque design*
- *Standard NEMA 34 dimensions*
- *Series or parallel wiring*



Description

Product Description:

The HT34-487 two-phase stepper motor is suitable for a wide range of motion control applications. Terminated with 8 motor leads, the motor can be connected in a few different ways, including bipolar series and bipolar parallel.






Please note that a VL series gearhead purchased for this motor will require a special mounting adaptor and 2 weeks lead time. Please contact customer service for the price of this adaptor.

Specifications

Part Number:	HT34-487
Frame Size:	NEMA 34
Motor Type:	High torque
Part Number w/Double Shaft:	HT34-487D
Part Number w/Encoder:	HT34-487D-YAA
Motor Length:	6.14 inches
Number of Lead Wires:	8
Lead Wire Configuration:	flying leads, no connector
Lead Wire/Cable Length:	18 inches inches
Lead Wire Gauge:	22 AWG
Unipolar Holding Torque:	1198 oz-in
Bipolar Holding Torque:	1694 oz-in
Step Angle:	1.8 deg
Bipolar Series Current:	4.45 A/phase
Bipolar Series Resistance:	1.04 Ohms/phase
Bipolar Series Inductance:	11.2 mH/phase
Bipolar Parallel Current:	8.91 A/phase
Bipolar Parallel Resistance:	0.26 Ohms/phase
Bipolar Parallel Inductance:	2.8 mH/phase
Unipolar Current:	6.30 A/phase
Unipolar Resistance:	0.52 Ohms/phase
Unipolar Inductance:	2.8 mH/phase
Rotor Inertia:	6.80E-02 oz-in-sec ²
Integral Gearhead:	No
Weight:	11.0 lbs
Storage Temperature:	-40 to 70 °C

Operating Temperature:	-20 to 50 °C
Insulation Class:	Class B (130 °C)
Maximum Radial Load:	42 lbs
Maximum Thrust Load:	33 (2.2 w/ encoder) lbs
Shaft Run Out:	0.002 inch T.I.R. max
Radial Play:	0.001 inch max w/ 1.1 lb load
End Play:	0.003 inch max w/ 2.2 lb load
Perpendicularity:	0.003 inches
Concentricity:	0.003 inches

Downloads

Family Datasheet:	 StepMotorWiring-8-lead-striped-ground.pdf
Datasheet:	http://s3.amazonaws.com/applied-motion-pdf/HT34-487.pdf
2D Drawing:	 HT34-487_RevH.pdf  HT34-487D-YAA_RevB.pdf
3D Drawing:	 34HT156D.igs  HT34-487D_156mm_YAA_Enc.igs
Speed-Torque Curves:	 ST_speed-torque.pdf  STR_speed-torque.pdf

Pricing

	HT34-487 Part No. w/ Single Shaft	HT34-487D Part No. w/ Double Shaft	HT34-487D-YAA Part No. w/ Encoder
1pc.	\$474.00	\$474.00	\$600.00
25pc.	\$407.64	\$407.64	\$516.00
50pc.	\$355.50	\$355.50	\$450.00
100pc.	Request a Quote for 100+ piece pricing.		