



## Solid State Devices, Inc.

14701 Firestone Blvd \* La Mirada, CA 90638  
Phone: (562) 404-4474 \* Fax: (562) 404-1773  
ssdi@ssdi-power.com \* www.ssdi-power.com

# SDA174HF series

## Designer's Data Sheet

### Part Number/Ordering Information <sup>1/</sup>

SDA174

HF

### Screening <sup>2/</sup>

— = Not Screened

TX = TX Level

TXV = TXV Level

S = S Level

### Reverse Recovery

HF = Hyper Fast

### Family/Voltage

J = 600 V

K = 700 V

L = 800 V

M = 900 V

**30 nsec**  
**2.0 Amp**  
**Single Phase Bridge**  
**Rectifier Assembly**  
**600 – 900 Volts**

### FEATURES:

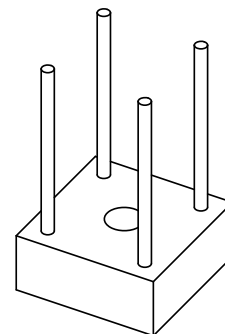
- Reverse Recovery Time: 30 ns Max
- Average Output Current: 2.0 Amps
- PIV: 600 to 900 Volts
- Hermetically Sealed Internal Discretes
- Aluminum Case
- Thermal Conductive Epoxy Encapsulated
- Available in Higher Voltages
- Available in Ultra Fast, Fast, and Standard Recovery

| Electrical Characteristics |    | Peak Inverse Voltage<br>(per leg) | Average DC Output Current<br>T <sub>C</sub> =Case Temp |       | Reverse Recovery Time | Peak Forward Surge Current<br>(1 Cycle) | Maximum Forward Voltage<br>(per leg) @ 1.0 ADC | Maximum Reverse Current<br>(per leg) @ PIV |       |
|----------------------------|----|-----------------------------------|--|-------|-----------------------|---|--|--|-------|
|                            |    |                                   | 50°C   | 100°C |                       |   |  | 25°C                                       | 100°C |
| Part Number                |    | Volts                             | Amps   | Amps  | ns                    | Amps                                    | Volts  | µA   | µA    |
| SDA174J                    | HF | 600                               | 2.0  | 1.8   | 30                    | 25                                      | 1.9  | 10   | 200   |
| SDA174K                    | HF | 700                               | 2.0  | 1.8   | 30                    | 25                                      | 1.9  | 10   | 200   |
| SDA174L                    | HF | 800                               | 2.0  | 1.8   | 30                    | 25                                      | 1.9  | 10   | 200   |
| SDA174M                    | HF | 900                               | 2.0  | 1.8   | 30                    | 25                                      | 1.9  | 10   | 200   |

### NOTES:

<sup>1/</sup> For ordering information, price, and availability - contact factory.

<sup>2/</sup> Screening based on MIL-PRF-19500. Screening flows available on request.



**NOTE:** All specifications are subject to change without notification.  
SCD's for these devices should be reviewed by SSDI prior to release.

**DATA SHEET #: RA0105A**

**DOC**



**Solid State Devices, Inc.**

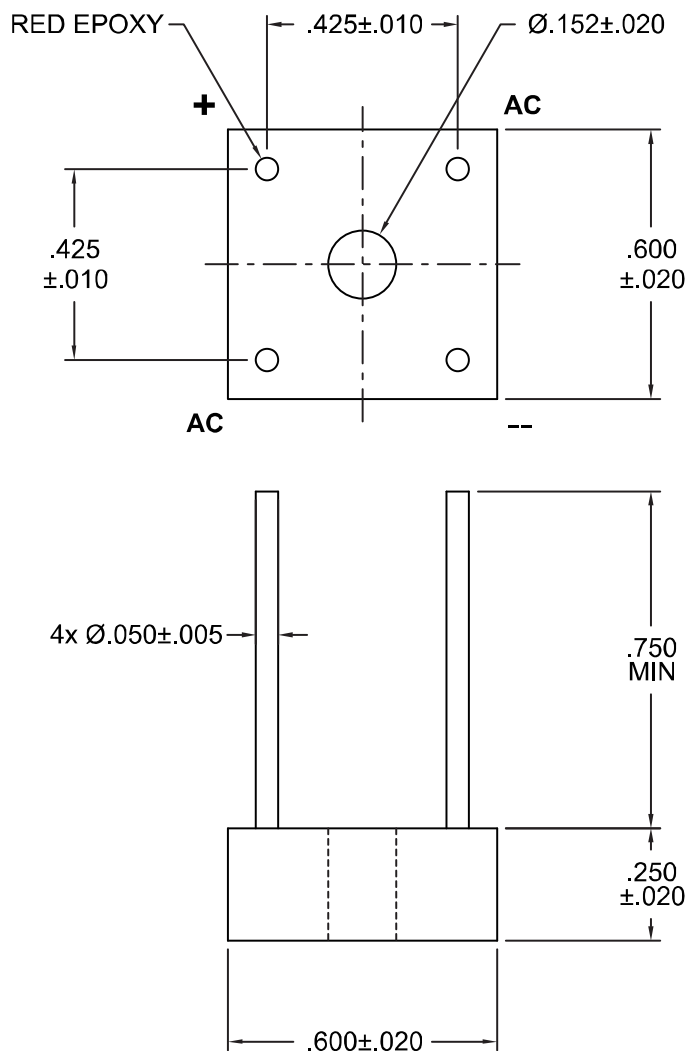
14701 Firestone Blvd \* La Mirada, CA 90638

Phone: (562) 404-4474 \* Fax: (562) 404-1773

ssdi@ssdi-power.com \* www.ssdi-power.com

## SDA174HF series

### SDA174J through SDA174M:



\*For information on curves, contact the Factory Representative for Engineering Assistance.

#### Design Notes:

Operating Temperature  $T_{OP}$  -55 °C to +150 °C

Reverse Recovery Time  $I_F = 500mA$ ,  $I_R = 1.0$  Amp,  $I_{rr} = 250mA$

**NOTE:** All specifications are subject to change without notification.  
SCD's for these devices should be reviewed by SSDI prior to release.

**DATA SHEET #: RA0105A**

**DOC**