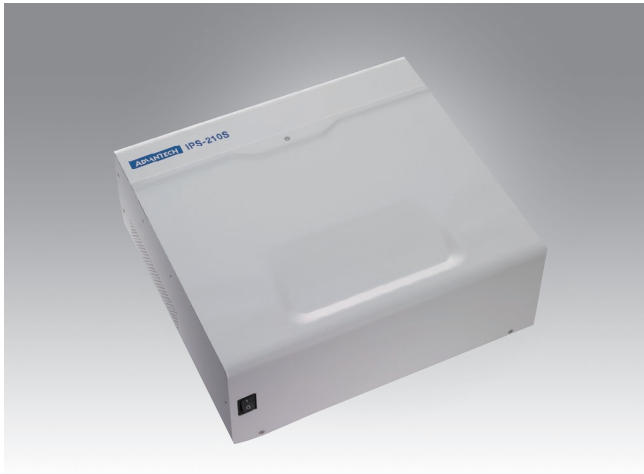


# IPS-M210S

## 210 Wh Industrial Power Storage System with Lithium-Iron Phosphate Cell



### Features

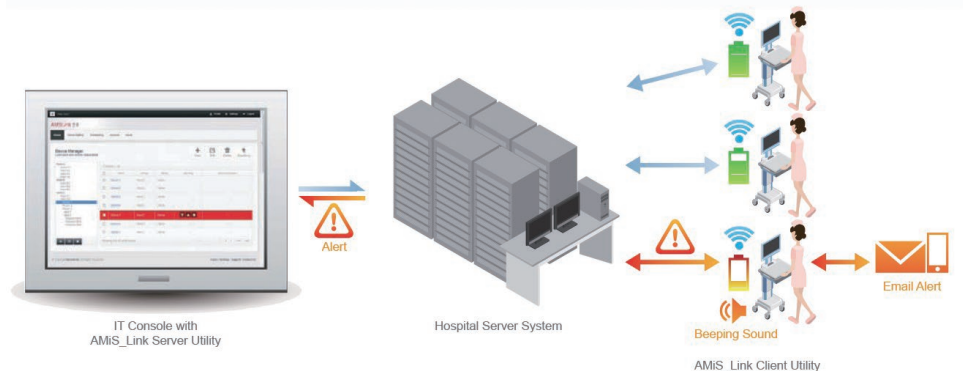
- Contains environmentally-friendly, long lifecycle rechargeable batteries
- 170W DC output for integration of various devices
- Fanless design for hospital environment
- Swappable battery pack design for quick and easy replacement
- 2 V<sub>DC</sub> output with simultaneous power support
- Safety protection prevents against over charge and discharge
- "AMiS\_Link" software solution for remote battery management



### Specifications

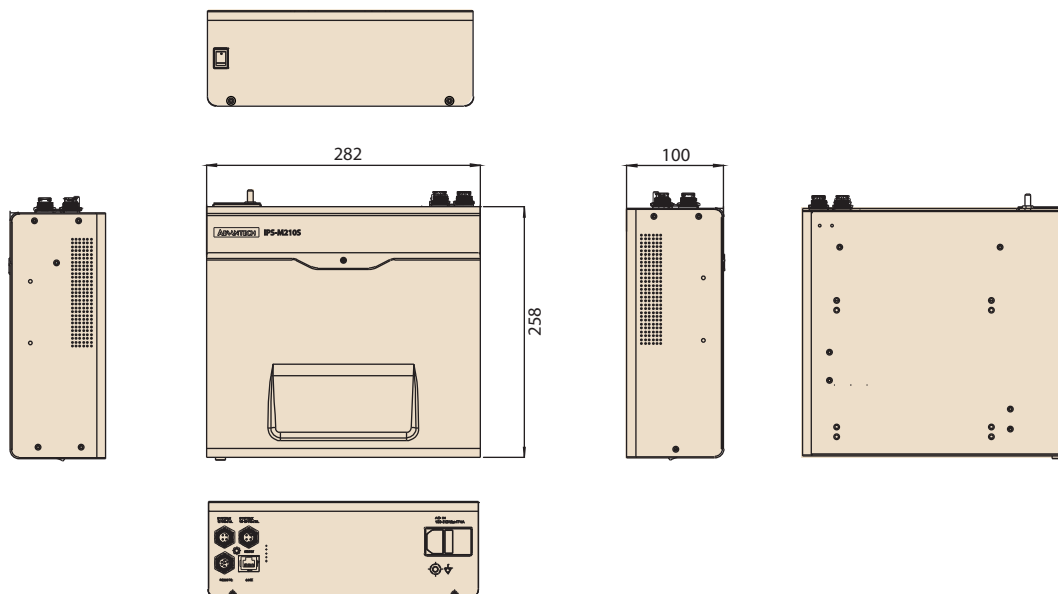
|                           |                            |   |
|---------------------------|----------------------------|---|
| Power Supply              | Battery Type               | Lithium-Iron Phosphate (LFP)  |
|                           | Battery Capacity           | 210 Wh  |
|                           | Battery Lifespan           | DOD 80%, 1000 cycles  |
|                           | Charge Time                | < 1.5 hr. DOD 100%  |
|                           | Input Voltage              | 100 ~ 240 V <sub>AC</sub> , 50 ~ 60 Hz, Max 4.5 A   |
|                           | DC Output Voltage          | System 1: 19 V <sub>DC</sub> , Max. 6 A<br>System 2: 12 V <sub>DC</sub> , Max. 5 A  |
| I/O Ports                 | Charging Status Indicators | LEDs with continuous readout; intelligent software  |
|                           | DC Output Interface        | DC jack (4-pin locking mini-din connector)  |
| Environment               | Communication Interface    | RS-232  |
|                           | Vibration                  | 5 ~ 500 Hz 1 G  |
|                           | Operating Temperature      | 30° C   |
|                           | Cooling System             | Fanless   |
| Physical Characteristics  | Water Resistance           | IP67 DC output connector  |
|                           | Dimensions                 | 282 x 260 x 101 mm (11.1" x 10.2" x 3.9")   |
|                           | Weight                     | 7 kg  |
| Power Management Software | AMiS_Link                  | Battery capacity indicator<br>Alerts (battery capacity, temperature, warning)<br>Battery life cycle statistics<br>Report & log file<br>Client installation & server installation (Optional)<br>Multi-language support, including Traditional Chinese, Simplified Chinese, English, German and Dutch |
| Certifications            |                            | CE, FCC Class B certified, CCC  |

### AMiS\_Link Software Solution for Remote Battery Management



## Dimensions

Unit: mm



## Ordering Information

| Part Number      | Cell Type | Battery Capacity | Lifecycle            | Charge time        | Weight | Remarks            |
|------------------|-----------|------------------|----------------------|--------------------|--------|--------------------|
| iPS-M210-LFA-SE  | LFP       | 210 Wh           | DOD 80%, 1000 cycles | < 1.5 hr. DOD 100% | 4 kg   |                    |
| iPS-M210A-LFA-SE | LFP       | 210 Wh           | DOD 80%, 1000 cycles | < 1.5 hr. DOD 100% | 4 kg   | For AMiS cart only |

## Rear I/O



1. System 2: 12 V<sub>DC</sub>, 5 A
2. System 1: 19 V<sub>DC</sub>, 6 A
3. 6-pin remote control connector
4. RJ-45 (to RS-232) connector

5. AC In and AC On/Off switch  
100 ~ 240 V<sub>AC</sub> / F4A
6. AC input switch
7. Ground pole

## Packing List (iPS-M210-LFA-SE)

| Part Number     | Part Description              | Quantity |
|-----------------|-------------------------------|----------|
| 1700020364-01   | 4-pin to Ring Terminal cable  | 1        |
| 1700020371-01   | 4-pin to DC Jack cable        | 1        |
| IPS-REMT-00-A0E | 6-pin remote control cable    | 1        |
| 1700019500      | RJ-45 to RS-232 console cable | 1        |