



CM0090Q0504ET COMMON MODE FILTER SPECIFICATION

Rev. A

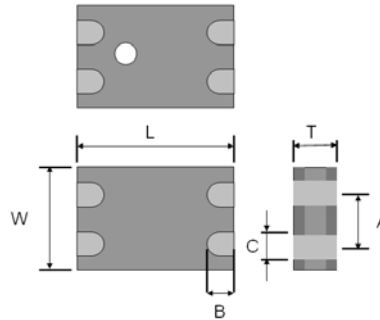
PRODUCT FEATURES

1. Surface mount common mode filter with a small size of 1.25 X 1.00 X 0.80 mm, RoHS compliant.
2. Provide wide pass band and high attenuation for common mode noise.
3. Highly stable under temperature and humidity changes.

RF CHARACTERISTICS

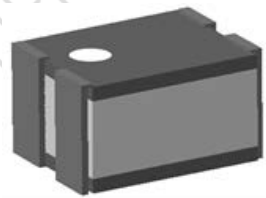
P/N CM0090Q0504ET	Specification
Common Mode Impedance	120 ohms \pm 20% @ 100MHz
DC Resistance	1.5 Ω max.
Rated Current	300 mA
Characteristic Impedance (Differential)	90 Ω (Typical)
Operating temperature range	-40°C to +85°C

PHYSICAL DIMENSIONS



Symbol	Dimension (mm)
L	1.25 \pm 0.10
W	1.00 \pm 0.10
T	0.80 \pm 0.10
A	0.55 \pm 0.10
B	0.20 \pm 0.15
C	0.30 \pm 0.10

TERMINAL CONFIGURATION

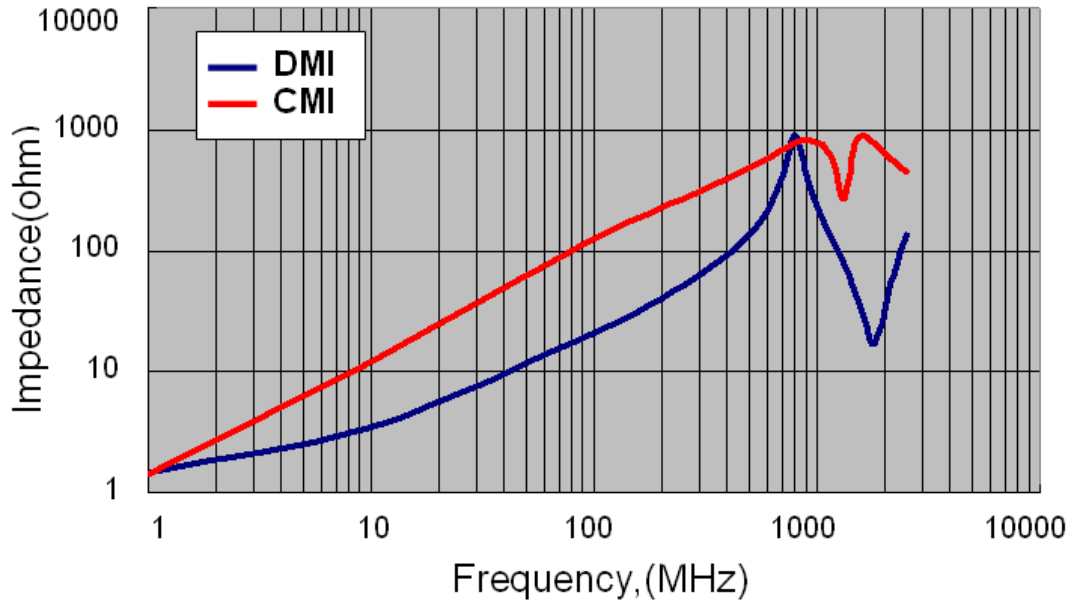


PCB DESIGN/LAYOUT CONSIDERATION

Figure	Symbol	Dimension (mm)
	L1	1.75 \pm 0.05
	L2	0.30 \pm 0.10
	L3	0.75 \pm 0.05
	L4	0.55 \pm 0.05
Design trace width to be 50 Ω impedance.		



Typical Impedance vs. Frequency Characteristic:



Typical Insertion Loss vs Frequency Characteristic:

