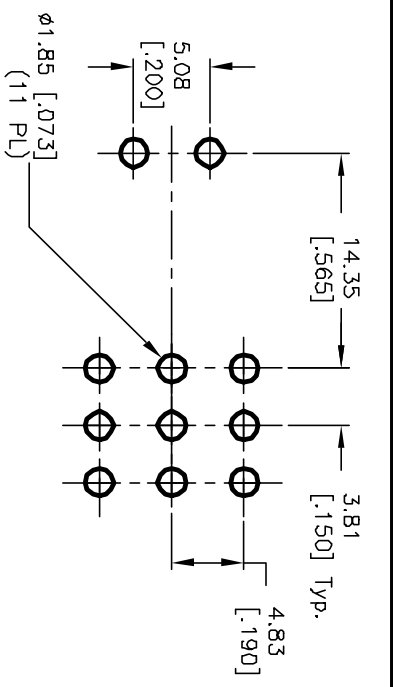
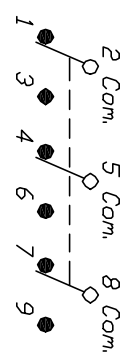


VIEW A-A
CROPPED FOR CLARITY



RECOMMENDED P.C.B. LAYOUT

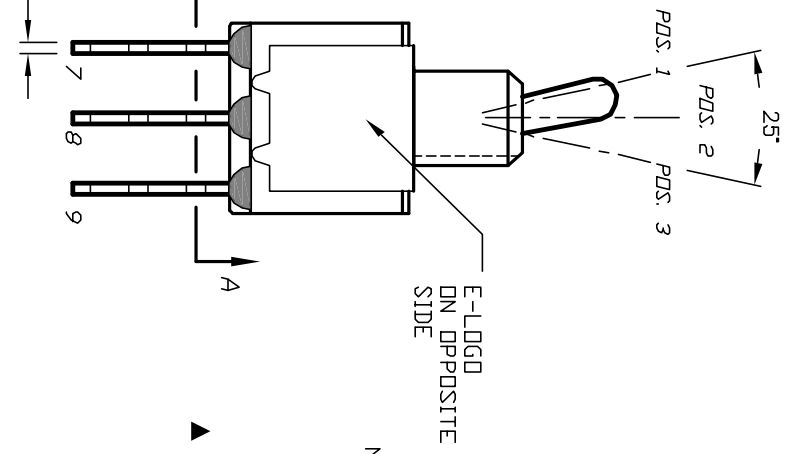
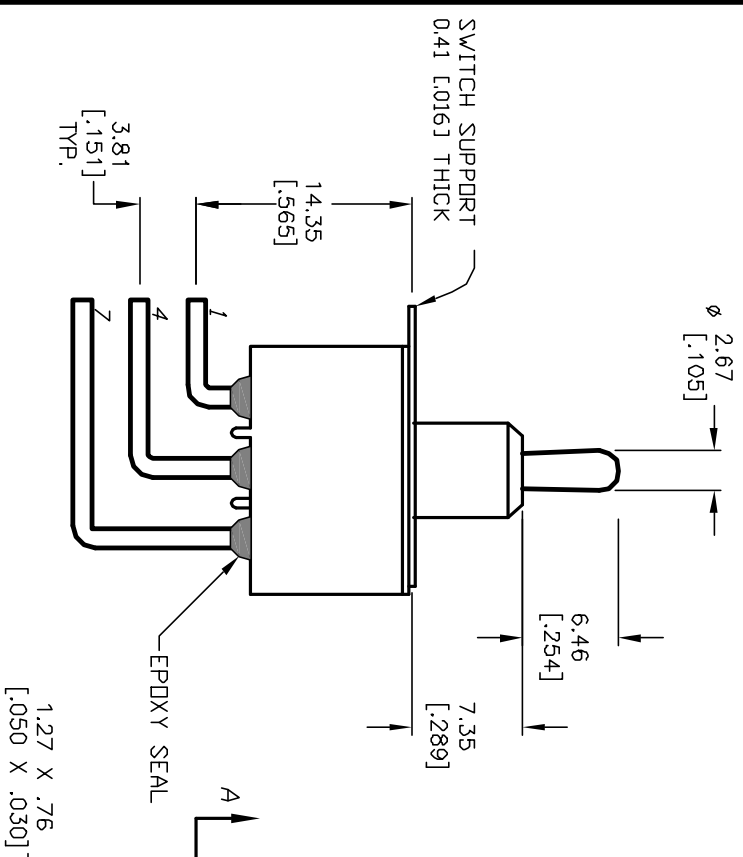
SWITCH FUNCTION		
POS. 1	POS. 2	POS. 3
DN	NDNE	DN
2-3,5-6 8-9	DPEN	2-1,5-4 8-7



NOTES:
CIRCUIT: 3PDT

1. ALL DIMENSIONS IN MM [INCH]
2. GENERAL TOLERANCE: X.X=±0.4 X.XX=±0.25
3. TERMINAL NUMBERS FOR REF ONLY
4. RATING: 0.4(VA) @20V max. (AC or DC)
5. CONTACT MATERIAL:
Copper Alloy W/Gold plate over
Nickel plate.
6. ELECTRIC LIFE: 50,000 make-and-break cycles at full load.
7. INSULATION RESISTANCE: 1,000 Mega-ohm min.
8. DIELECTRIC STRENGTH: 1,000 V RMS @sea level.
9. OPERATING TEMP.: -30°C to 85°C

E-SWITCH®



REV.	ECN No.	DESCRIPTION	DATE	CHK'D
A	12328	RELEASED FOR PRODUCTION	8/7/02	CJB

TITLE	SCALE	DATE	DR	DWG	REV
100 3P-1 T2 B4 M6 R E (GOLD CONTACTS)	2:1	8/7/02	CB	T131027	A

THE INFORMATION CONTAINED IN THIS DOCUMENT IS PROPRIETARY TO E-SWITCH AND IS NOT TO BE COPIED OR TRANSMITTED