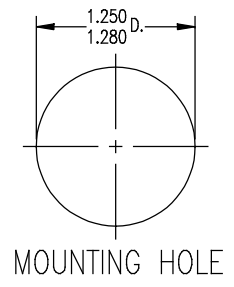
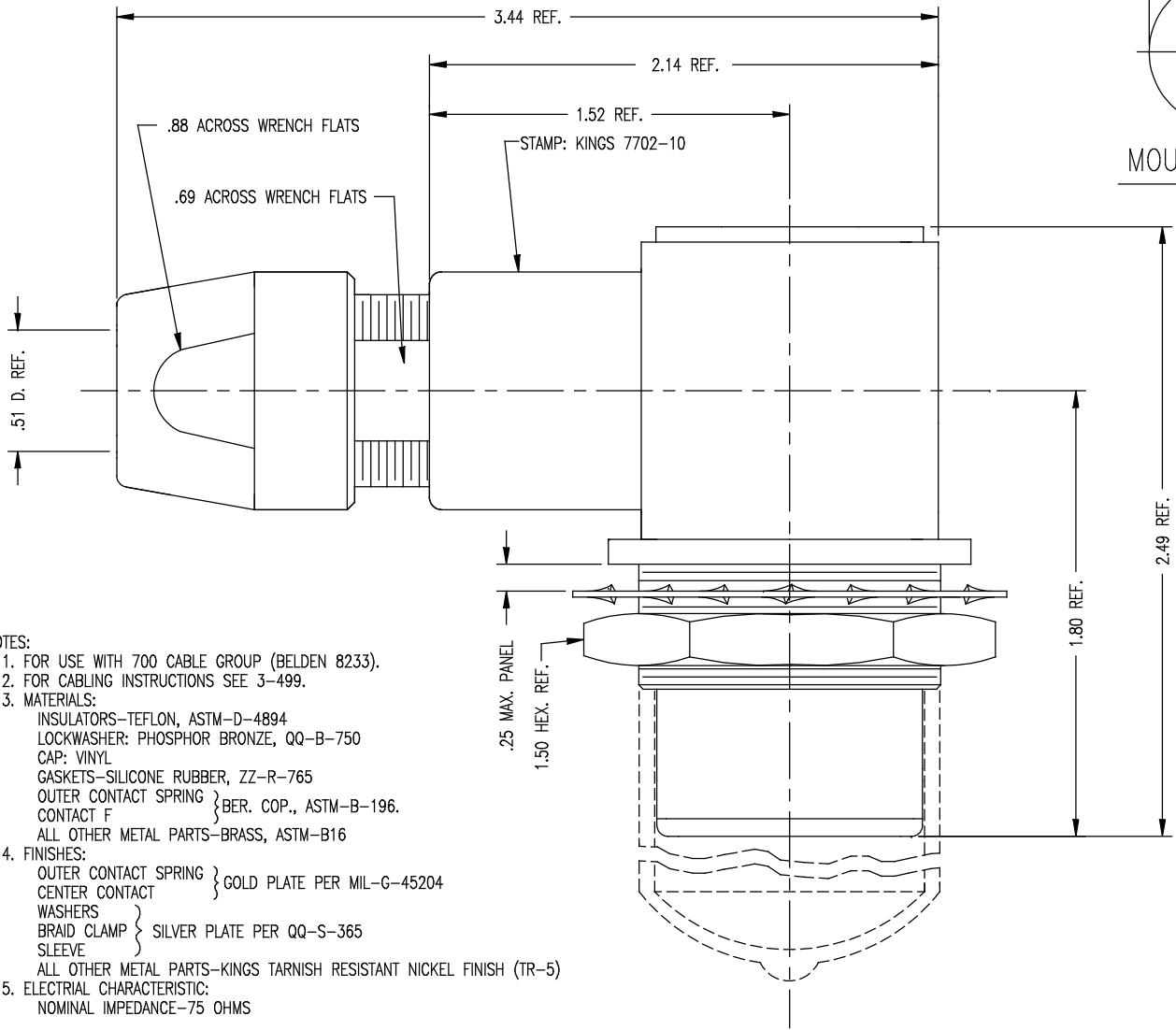


DASH NO.	M CODE	MADE FROM
----------	--------	-----------



GSD

GSD

REVISIONS	
ISSUE	CHANGES
0	ER 36032 KH 01/25/95
1	CN 38688 C BDH 10/10/02
2	CN 38787 E DCT 3/6/3
3	CN 38864 E JPK 06/03/03
4	CN 38933 A TML 10/03/03

7702-10

- NOTES:
- FOR USE WITH 700 CABLE GROUP (BELDEN 8233).
 - FOR CABLING INSTRUCTIONS SEE 3-499.
 - MATERIALS:
INSULATORS-TEFLON, ASTM-D-4894
LOCKWASHER: PHOSPHOR BRONZE, QQ-B-750
CAP: VINYL
GASKETS-SILICONE RUBBER, ZZ-R-765
OUTER CONTACT SPRING } BER. COP., ASTM-B-196.
CONTACT F }
ALL OTHER METAL PARTS-BRASS, ASTM-B16
 - FINISHES:
OUTER CONTACT SPRING } GOLD PLATE PER MIL-G-45204
CENTER CONTACT }
WASHERS }
BRAID CLAMP } SILVER PLATE PER QQ-S-365
SLEEVE }
ALL OTHER METAL PARTS-KINGS TARNISH RESISTANT NICKEL FINISH (TR-5)
 - ELECTRIAL CHARACTERISTIC:
NOMINAL IMPEDANCE-75 OHMS

7702-10SD

SCALE 2:1	
APPROX SURFACE AREA	
WAS: E-18689	
USED ON	
REF:	
JACK, ANGLE, BULKHEAD, TRI-LOC	
DRAWN KH	DATE 01/25/95
DESIGN GA	DATE 01/26/95
APPR. DW	DATE 09/11/95

KINGS
ELECTRONICS CO., INC.
ROCK HILL, SOUTH CAROLINA 29730

7702-10