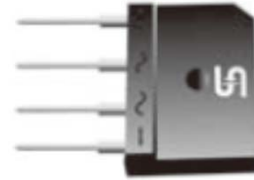


Glass Passivated Bridge Rectifiers

FEATURES

- UL Recognized File # E-326243
- Glass passivated junction
- Ideal for printed circuit board
- Typical IR less than 0.1uA
- High surge current capability
- Compliant to RoHS Directive 2011/65/EU and in accordance to WEEE 2002/96/EC
- Halogen-free according to IEC 61249-2-21 definition


TS4K


MECHANICAL DATA

Case : TS4K

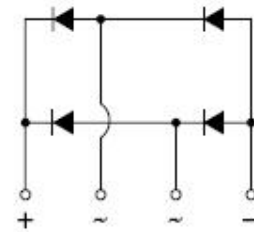
Molding compound, UL flammability classification rating 94V-0
 Base P/N with suffix "G" on packing code - halogen-free, RoHS compliant

Terminal : Matte tin plated leads, solderable per JESD22-B102
 Meet JESD 201 class 1A whisker test

Polarity : Polarity as marked on the body

Mounting torque : 8.17 in-lbs maximum

Weight : 4 gram (approximately)



MAXIMUM RATINGS AND ELECTRICAL CHARACTERISTICS (T _A =25°C unless otherwise noted)					
PARAMETER	SYMBOL	TS10K40	TS10K60	TS10K80	Unit
Maximum repetitive peak reverse voltage	V _{RRM}	400	600	800	V
Maximum RMS voltage	V _{RMS}	280	420	560	V
Maximum DC blocking voltage	V _{DC}	400	600	800	V
Maximum average forward rectified current	I _{F(AV)}	10			A
Peak forward surge current, 8.3 ms single half sine-wave superimposed on rated load	I _{FSM}	150			A
Rating for fusing (t<8.3mS)	i ² T	93			A ² sec
Maximum instantaneous forward voltage (Note 1)	V _F		IF= 5 A	1.0	V
			IF= 10 A	1.1	
Maximum DC reverse current at rated DC blocking voltage	I _R		T _J =25 °C	10	uA
			T _J =125°C	500	
Typical thermal resistance	R _{θJC}	2.3			°C/W
Operating junction temperature range	T _J	- 55 to + 150			°C
Storage temperature range	T _{STG}	- 55 to + 150			°C

Note 1 : Pulse test with PW=300u sec, 1% duty cycle

ORDERING INFORMATION				
PART NO.	PACKING CODE	GREEN COMPOUND CODE	PACKAGE	PACKING
TS10Kxx (Note 1)	D3	Suffix "G"	TS4K	25 / TUBE
	X2		TS4K	Forming

Note 1: "xx" defines voltage from 400V (TS10K40) to 800V (TS10K80)

EXAMPLE				
PREFERRED P/N	PART NO.	PACKING CODE	GREEN COMPOUND CODE	DESCRIPTION
TS10K80 D3	TS10K80	D3		
TS10K80 D3G	TS10K80	D3	G	Green compound

RATINGS AND CHARACTERISTICS CURVES

(TA=25°C unless otherwise noted)

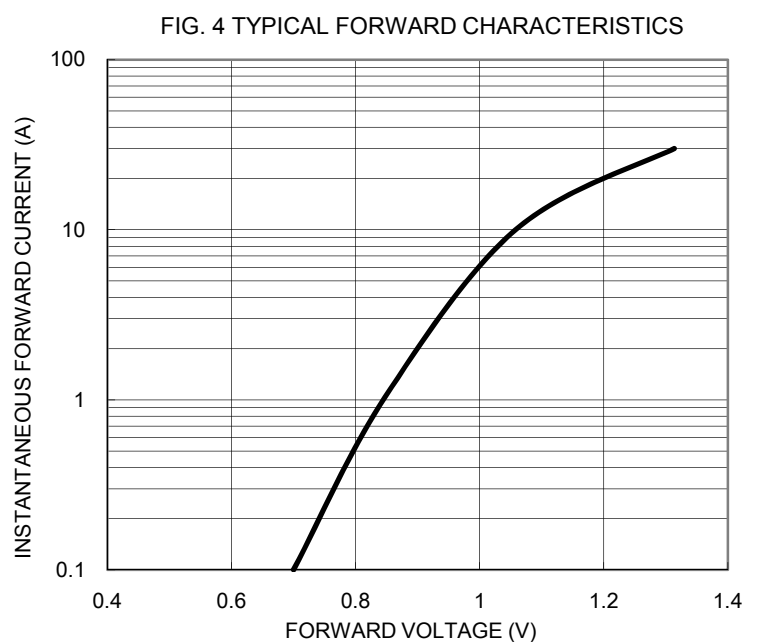
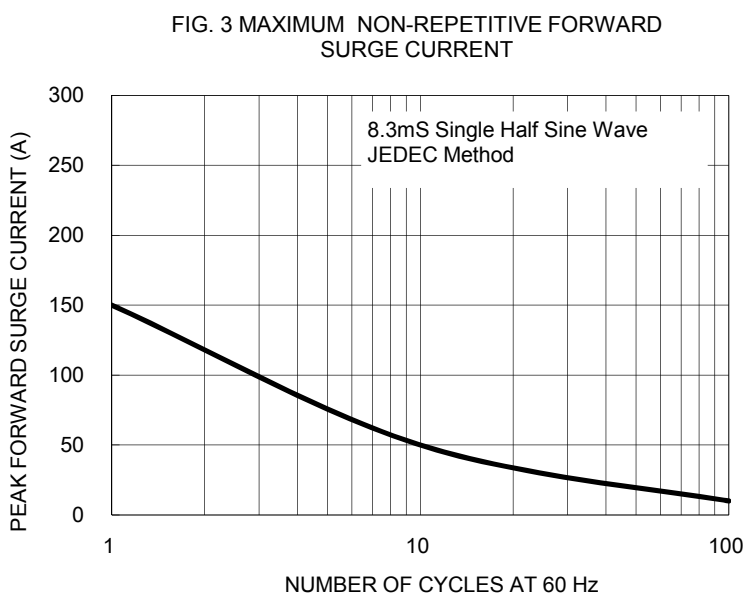
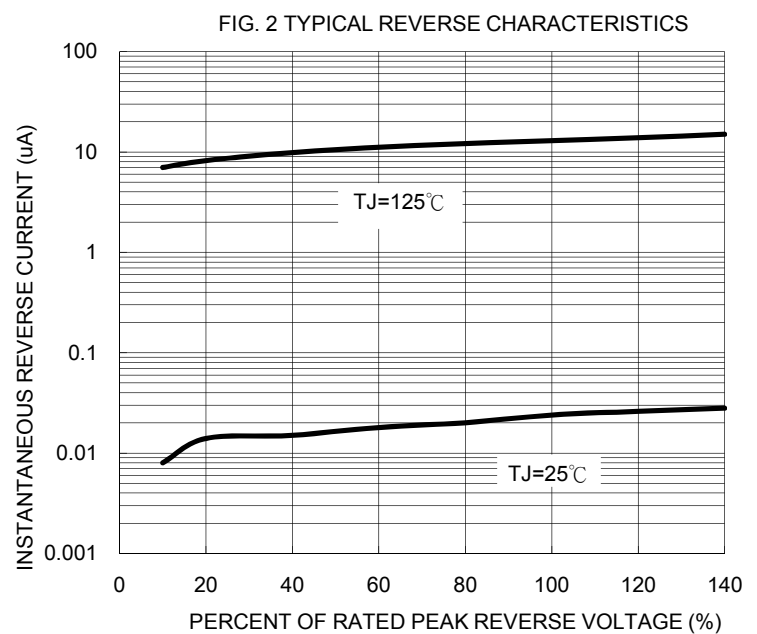
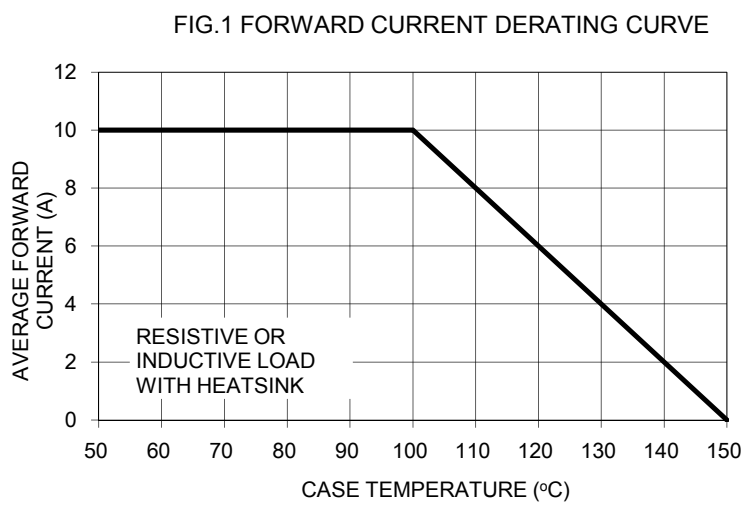
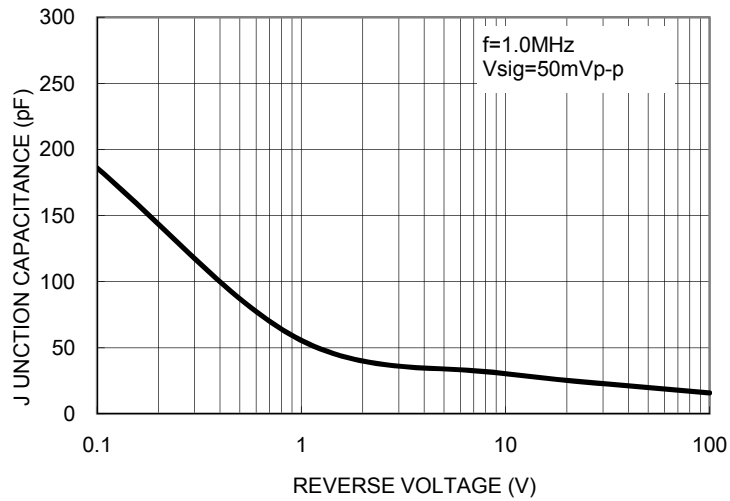
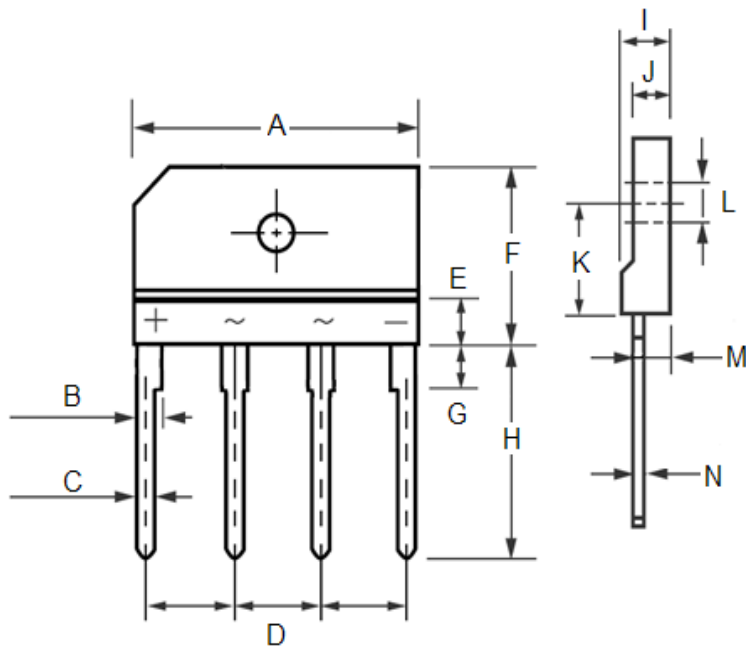


FIG. 5 TYPICAL JUNCTION CAPACITANCE



PACKAGE OUTLINE DIMENSIONS



DIM.	Unit(mm)		Unit(inch)	
	Min	Max	Min	Max
A	24.70	25.30	0.972	0.996
B	2.00	2.30	0.079	0.091
C	0.90	1.10	0.035	0.043
D	7.30	7.70	0.287	0.303
E	3.00	5.00	0.118	0.197
F	14.70	15.30	0.579	0.602
G	3.30	3.70	0.130	0.146
H	17.00	18.00	0.669	0.709
I	4.40	4.80	0.173	0.189
J	3.40	3.80	0.134	0.150
K	9.30	9.60	0.366	0.378
L	3.10	3.60	0.122	0.142
M	3.10	3.40	0.122	0.134
N	0.50	0.70	0.020	0.028

MARKING DIAGRAM



- P/N = Specific Device Code
- G = Green Compound
- YWW = Date Code
- F = Factory Code