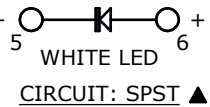
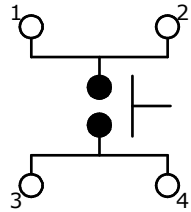
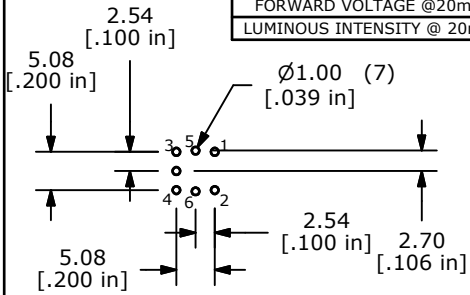
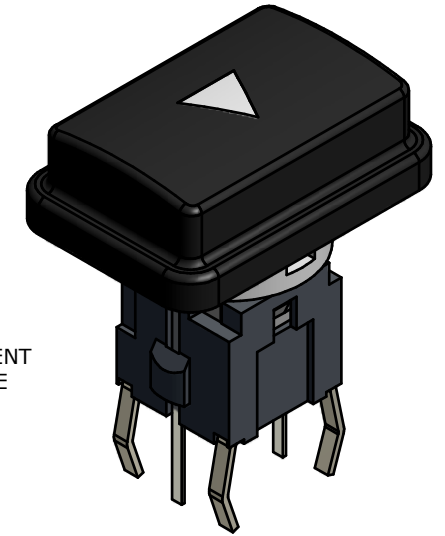
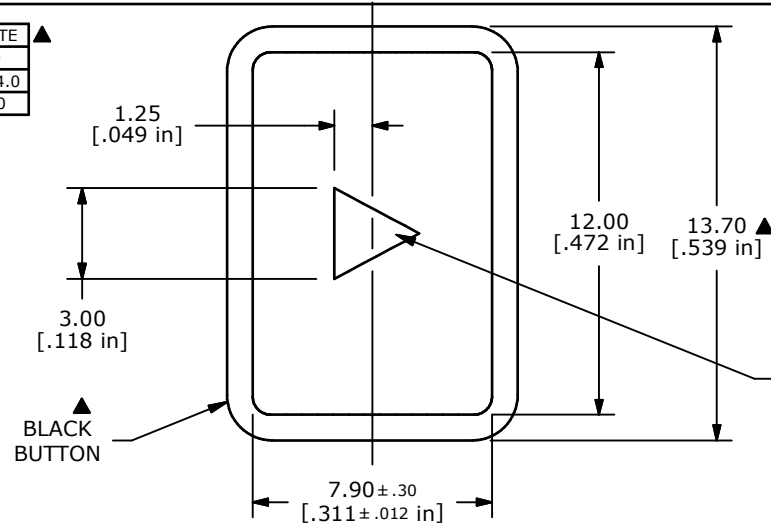


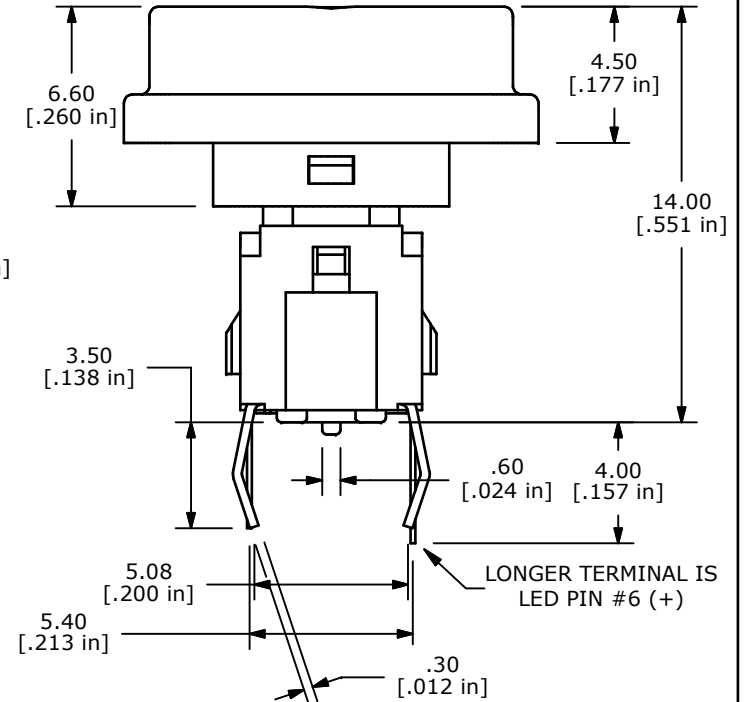
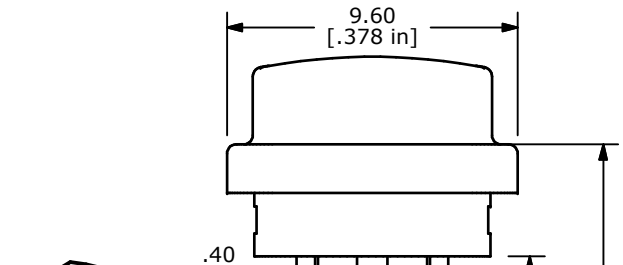
LED SPECS		UNITS	WHITE ▲
FORWARD CURRENT	mA		20
FORWARD VOLTAGE @20mA	V		3.2-4.0
LUMINOUS INTENSITY @ 20mA	MCD		100



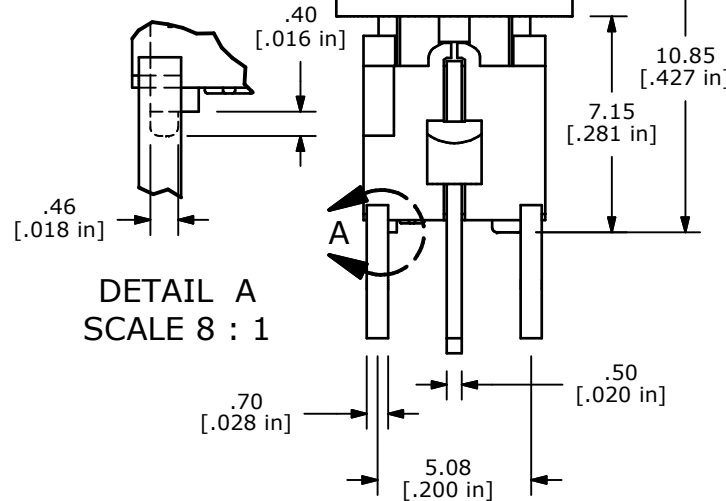
- NOTES:
1. ALL DIMENSIONS IN MM [INCH]
  2. GENERAL TOLERANCE: X.X±0.4  
X.XX±0.25
  3. RATING: 12VDC @ 50mA
  4. CONTACT RESISTANCE: 100mΩ MAX.
  5. INSULATION RESISTANCE: 100MΩ MIN.
  - ▲ 6. OPERATING FORCE: 180± 50gf
  7. TRAVEL: 0.2± 0.1mm
  8. OPERATING TEMPERATURE: -20°C TO 70°C
  9. OPERATING LIFE: 500,000 CYCLES
  - ▲ 10. LED: WHITE
  11. ▲ DENOTES CRITICAL PARAMETERS
  12. 2002/95/EC (ROHS) COMPLIANT
  13. PARTS TO BE PACKAGED IN TRAYS.



TRANSLUCENT TRIANGLE



LONGER TERMINAL IS LED PIN #6 (+)



TITLE TL1220S3NNBWTRIANG

A	21234	INITIAL RELEASE	9/17/13	EBP
REV	PCR NO	DESCRIPTION	DATE	BY

SCALE	DATE	DR	DWG	REV
4:1	9/17/2013	EBP	B260020	A

THE INFORMATION CONTAINED IN THIS DOCUMENT IS PROPRIETARY TO E-SWITCH AND IS NOT TO BE COPIED OR TRANSFERRED