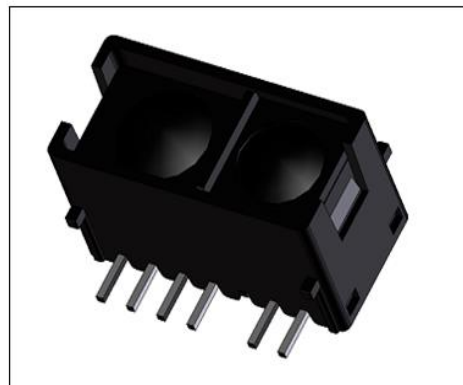


### Description

This sensor is a near distance measure photo interrupter. It is combines high-output GaAs IRED and high sensitive LTV(light to voltage) with amplifier.



### Features

- IRED operate pulse signal.
- Calculated Distance.
- Low tolerance with color.
- RoHS Compliance.

### Applications

- Cleaner robot.
- Short distance measure.
- Home appliance.
- Hand drier.



### Absolute Maximum Ratings (T<sub>a</sub>=25°C, Unless otherwise noted)

Characteristic		Symbol	Ratings	Unit
Input	Reverse Voltage	VR	5	V
	Forward Current	IF	50	mA
	Peak Forward Current	IFP	0.5	A
	Power Dissipation	PD	90	mW
Output	Supply Voltage	VCEO	0~12	V
Operating Temperature		Topr.	-25 ~ 85	°C
Storage Temperature		Tstg.	-40 ~ 85	°C

Note: ※1.Duty ratio = 1/100, pules width = 0.1ms

The contents of this data sheet are subject to change without advance notice for the purpose of improvement. When using this product, would you please refer to the latest specifications.

## Electrical Characteristics (T<sub>a</sub>=25°C)

Characteristic		Symbol	Min	Typ	Max	Unit	Condition
Input	Forward voltage	V <sub>F</sub>	-	1.45	-	V	I <sub>F</sub> = 50mA
	Reverse Current	I <sub>R</sub>	-	-	70	μA	V <sub>R</sub> = 5V
	Peak wavelength	λ <sub>P</sub>	-	875	-	nm	-
Output	Dark Voltage	CH A	-	-	22	mV	V <sub>CC</sub> = 3.3V, 0Lux
		CH B	-	-	17	mV	V <sub>CC</sub> = 3.3V, 0Lux
Transmission	Detecting Distance	L <sub>DS</sub>	20	-	100	mm	V <sub>CC</sub> = 3.3V
	Output Voltage	CH A	-	0.55	-	V	V <sub>CC</sub> = 3.3, V <sub>FVP</sub> = 500Hz, L = 50mm
		CH B	-	0.65	-	V	
	Leakage Voltage	V <sub>Leak</sub>	-	-	50	mV	
Response Time	Rise Time	t <sub>r</sub>	-	250	-	μs	Fig.1 Fig.2
	Fall Time	t <sub>f</sub>	-	350	-	μs	

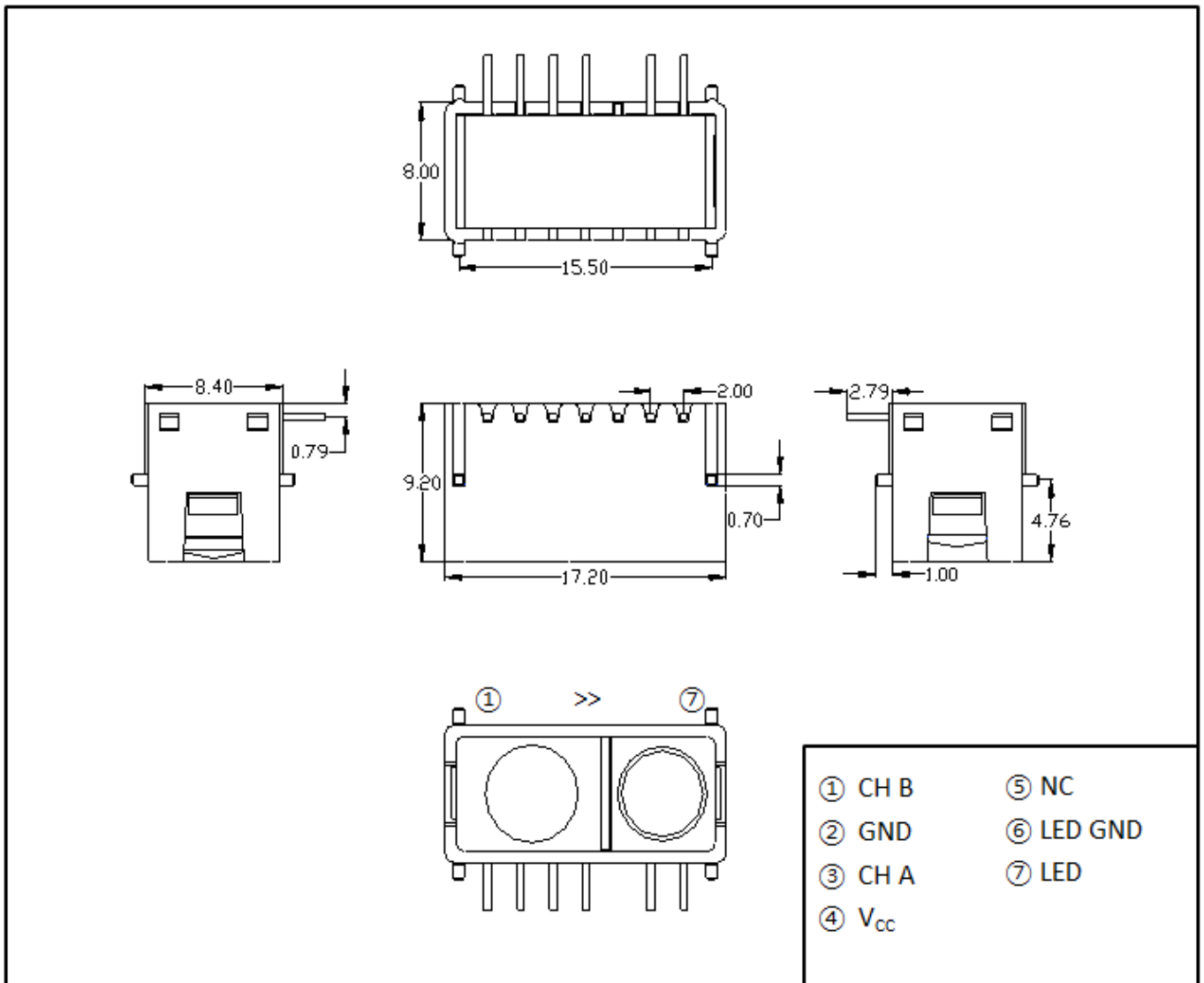
Note1. Reference media: KODAK 90% White paper

Note2. Input VFP have a 500Hz frequency with 40% duty and media position is 100mm from top surface of sensor. Apply with recommendation circuit

Note3. Adjust amplitude and offset of square wave so that Vout transitions from 10% to 90% of Vout range of the Device Under Test(DUT)

The contents of this data sheet are subject to change without advance notice for the purpose of improvement. When using this product, would you please refer to the latest specifications.

## Package Outline Dimensions



The contents of this data sheet are subject to change without advance notice for the purpose of improvement. When using this product, would you please refer to the latest specifications.