

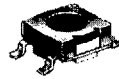
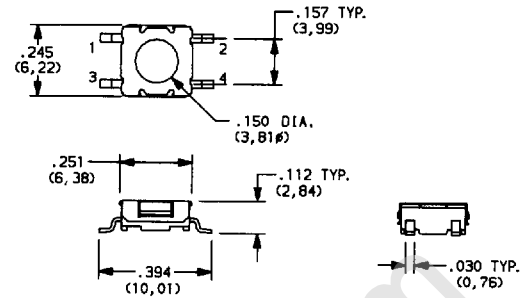
*Process sealed—withstands soldering and cleaning processes.

A

WITH S SURFACE MOUNT TERMINALS

PART NO.	ACTUATOR HEIGHT	SWITCH FUNCTION	
		POS. 1	POS. 2
KT11B0SM	FLUSH	OFF	MOM.
KT11B1SM	.025 (0,64)	OFF	MOM.
KT11B2SM	.088 (2,24)	OFF	MOM.
KT11P2SM	.093 (2,36)	OFF	MOM.
KT11P3SM	.044 (1,12)	OFF	MOM.
KT11P4SM	.156 (3,96)	OFF	MOM.
Conn. Terms		OPEN	1,2-3,4
Schematic			

MOM. = MOMENTARY

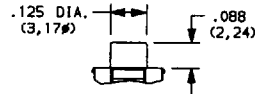


WITH B0 ACTUATOR

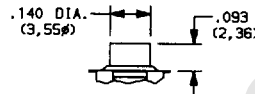
Part No. Shown: KT11B0SM



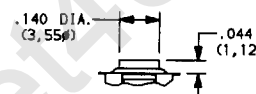
WITH B1 SILICONE RUBBER ACTUATOR



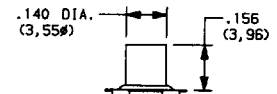
WITH B2 SILICONE RUBBER ACTUATOR



WITH P2 HARD PLASTIC ACTUATOR



WITH P3 HARD PLASTIC ACTUATOR



WITH P4 HARD PLASTIC ACTUATOR

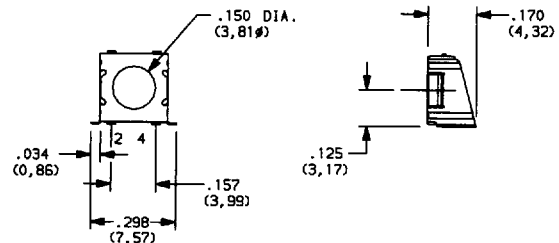
WITH SA RIGHT ANGLE SURFACE MOUNT TERMINALS

PART NO.	ACTUATOR HEIGHT	SWITCH FUNCTION	
		POS. 1	POS. 2
KT11B0SAM	FLUSH	OFF	MOM.
KT11B1SAM	.025 (0,64)	OFF	MOM.
KT11B2SAM	.088 (2,24)	OFF	MOM.
Conn. Terms		OPEN	2-4
Schematic			

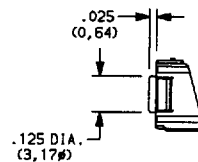
MOM. = MOMENTARY



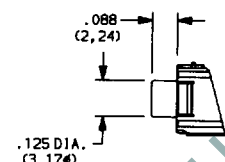
WITH B0 ACTUATOR



Part No. Shown: KT11B0SAM

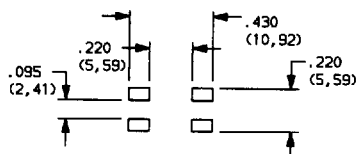


WITH B1 SILICONE RUBBER ACTUATOR



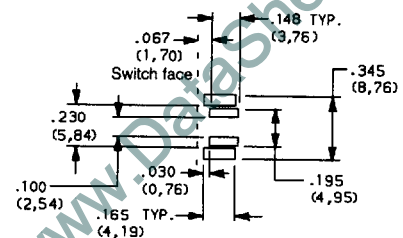
WITH B2 SILICONE RUBBER ACTUATOR

S TERMINAL STYLE



PC MOUNTING

SA TERMINAL STYLE



Suggested mounting patterns, see CAUTION page A-19.

HOW TO ORDER

Complete part numbers for KT SERIES SEALED SURFACE MOUNT MINIATURE KEY SWITCHES are shown on pages A-17 and A-18. Switches supplied in rigid dispensing tubes or on embossed antistatic tape and reels per EIA 481-1.

SPECIFICATIONS

CONTACT RATING: 1.0 VA max. @ 50 V AC or DC max.
MECHANICAL & ELECTRICAL LIFE: 100,000 make-and-break cycles at full load.
CONTACT RESISTANCE: Below 50 milliohms typ. initial @ 2-4 V DC, 100 mA.
INSULATION RESISTANCE: 10^9 ohms min.
DIELECTRIC STRENGTH: 250 V RMS min. @ sea level.
OPERATING TEMPERATURE: -40°C to 90°C.
SOLDERABILITY: Per MIL-STD-202F method 208D, or EIA RS-186E method 9 (1 hour steam aging).
PACKAGING: Switches supplied in rigid dispensing tubes or on embossed antistatic tape and reels per EIA 481-1. Tape and cover strip are conductive for use near statically sensitive components. Consult factory.

MATERIALS

BASE: LCP (UL 94V-0).
ACTUATOR: B0, B1, B2 actuators: Silicone rubber.
P2, P3, P4 actuators: 4/6 nylon.
SEAL: Silicone rubber.
HOUSING: Stainless steel.
SWITCH SUPPORT: Stainless steel, tin plated.
MOVABLE CONTACT: Stainless steel, silver plated.
STATIONARY CONTACTS: Copper alloy, silver plated.
TERMINALS: Copper alloy, with tin-lead alloy over nickel plate. All terminals insert molded.

NOTE: Specifications and materials listed above are general specifications. Specifications available for specific and custom switches, consult factory.

CAUTION: PC mounting layouts and pads as shown are designed to be compatible with the latest equipment and reflow techniques. Care should be exercised, however, in the design and location of PC lands to suit individual needs. Orientation relative to reflow direction may significantly impact solder joint integrity.