

SPECIFICATIONS

Mechanical

Contact Retention Force: 0.91Kg (2.01Lb) min.
Durability: 500 Cycles

Electrical

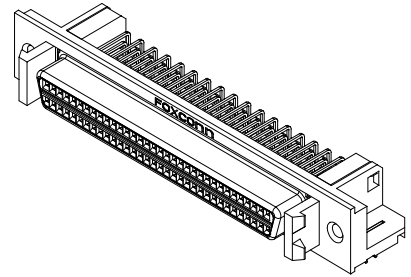
Current Rating: 1A
Contact Resistance: 35mΩ max. initial, 55mΩ max. after Test
Dielectric Withstanding Voltage: 500V/1 min.
Insulation Resistance: 1000MΩ min. initial, 100MΩ min. final

Physical

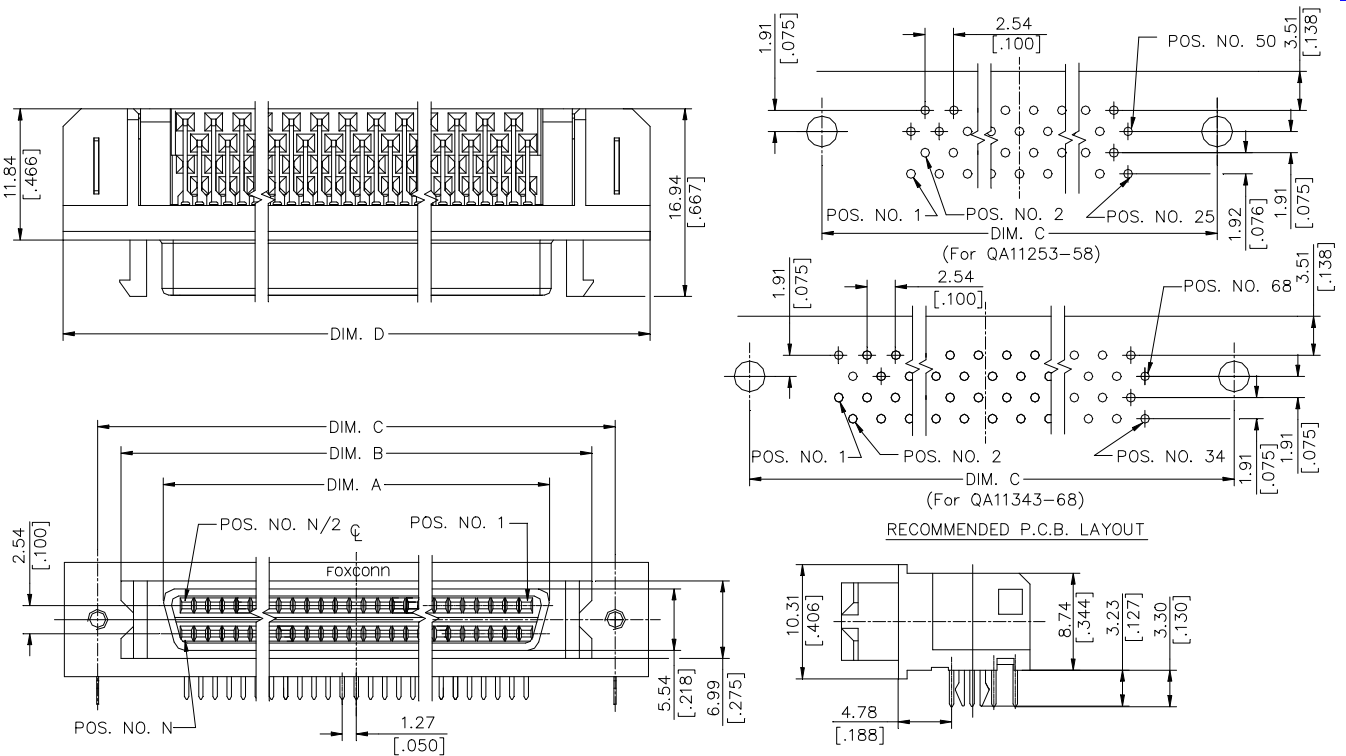
Housing: Thermoplastic, UL 94V-0 rated in Black Color
Contact: Copper alloy
Plating: See "ORDERING INFORMATION"
Operating Temperature: -55°C to +105°C

SCSI II/ III Connector

QA Series
Right Angle, T/H Type
1.27mm [.050"] Pitch



DRAWING



ORDERING INFORMATION

PRODUCT NO.: **QA11***-LHB*- * F**

- Series Prefix
- Termination Type
1=Right angle
- Contact Design Type
1=Female
- No. of Pos.
25=50 Pos.
34=68 Pos.
- Lead Free Code
- Packing Code
4=Tray
A=Tube
- Extention Code
LHB4=50 Pos.
LHB8=68 Pos.
- Contact Plating
1=Gold Flash 6=10μ" Gold
2=20μ" Gold 7=15μ" Gold
3=30μ" Gold

QA1134*-LHB8-AF	68	68	46.13 [1.816]	53.72 [2.115]	57.91 [2.280]	63.88 [2.515]
QA1125*-LHB4-AF	50	50	34.70 [1.366]	42.29 [1.665]	46.48 [1.830]	52.45 [2.065]
P/N	POS. N		DIM. A	DIM. B	DIM. C	DIM. D