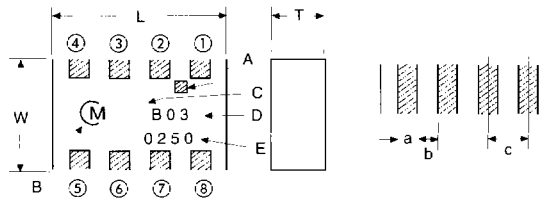
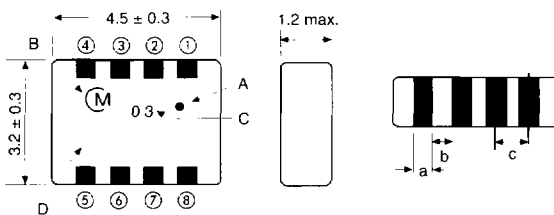


**LDC35B030GC0250**  
**DIMENSIONS: mm**



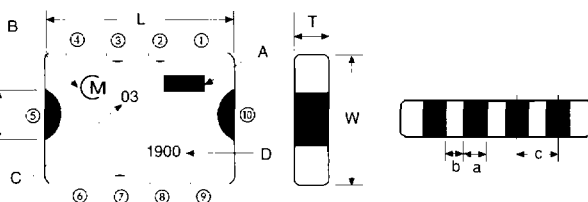
Code	Dimensions	Code	Dimensions
L	5.7 ± 0.3	a	0.4 min.
W	5.0 ± 0.3	b	0.3 min.
T	2.2 max.	c	1.27 ± 0.2

**LDC30B030GC0850/1000**  
**DIMENSIONS: mm**



Code	Dimensions	Code	Dimensions
a	0.4 min.	c	1.0 ± 0.2
b	0.3 min.	—	—

**LDC30B030GC1600/1750/1900/2100/2500**  
**DIMENSIONS: mm**

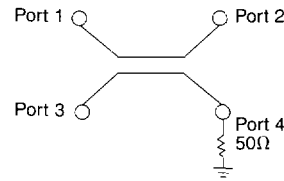


Code	Dimensions	Code	Dimensions
L	4.5 ± 0.3	b	0.3 min.
W	3.2 ± 0.3	c	1.0 ± 0.2
T	2.2 max.	d	0.8 ± 0.3
a	0.4 min.	—	—

Weight ≈ .09g

**FEATURES**

- Small size: see dimensions
- Light weight
- Tape and reel packaging
- Reflow solderable
- Available to cover a frequency range from 200MHz to 2.7GHz



Port Arrangement  
Valid for: All 90° Hybrids & Directional Couplers

**MARKING: LDC35 TYPE**

Mark	Description
A	Directional Input Mark
B	Manufacturer's Name Code
C	Phase B: 90°
D	Coupling Value (3dB)
E	Center Frequency (MHz)

**TERMINALS: LDC35B030GC0250**

Terminal No.	Terminal Name	Terminal No.	Terminal Name
①	Port 1 (IN)	⑥	GND
②	GND	⑦	GND
③	GND	⑧	Port 3 (OUT) 0° Port
④	Port 4 (50Ω to GND)	—	—
⑤	Port 2 (OUT) 90° Port	—	—

**MARKING: LDC30B030GC0850/1000**

Mark	Description
A	Directional Input Mark
B	Manufacturer's Name Code
C	Coupling
D	Center Frequency (unit: MHz)

**TERMINALS: LDC30B030GC0850/1000**

Terminal No.	Terminal Name	Terminal No.	Terminal Name
①	Port 1 (IN)	⑤	Port 2 (OUT) 90° Port
②	GND	⑥	GND
③	GND	⑦	GND
④	Port 4 (50Ω to GND)	⑧	Port 3 (OUT) 0° Port

**MARKING: LDC30B030GC1600/1750/1900/2100/2500**

Mark	Description
A	Directional Input Mark
B	Manufacturer's Name Code
C	Coupling Value 3dB
D	Center Frequency (unit: MHz)

**TERMINALS: LDC30B030GC1600/1750/1900/2100/2500**

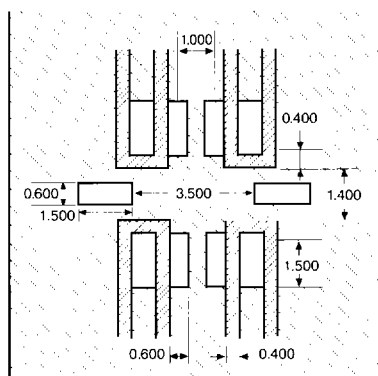
Terminal No.	Terminal Name	Terminal No.	Terminal Name
①	Port 1 (IN)	⑥	Port 2 (OUT) 90° Port
②	GND	⑦	GND
③	GND	⑧	GND
④	Port 4 (50Ω to GND)	⑨	Port 3 (OUT) 0° Port
⑤	GND	⑩	GND

3dB HYBRID SPECIFICATIONS

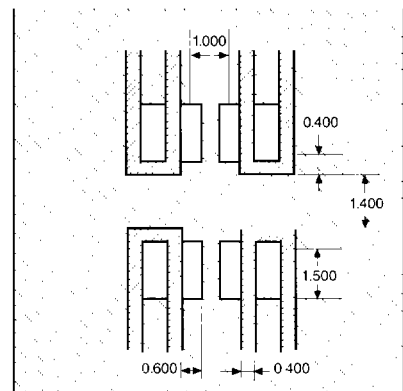
P/N	Frequency Range	Insertion Loss	Phase Deviation	Amplitude Balance	Isolation	VSWR	Power Capacity (50Ω Load)
LDC35B030GC0250	220 ~ 280MHz	3.0 +0.6/-0.2dB	90.0 ± 3.0°	0.8dB max.	20.0dB min.	1.4 max.	5 W max.
LDC30B030GC0850	750 ~ 950MHz						3 W max.
LDC30B030GC1000	900 ~ 1100MHz						
LDC30B030GC1600	1420 ~ 1700MHz						
LDC30B030GC1750	1650 ~ 1850MHz						
LDC30B030GC1900	1800 ~ 2000MHz						
LDC30B030GC2100	1900 ~ 2300MHz						
LDC30B030GC2500	2300 ~ 2700MHz						17.0dB min.

DIMENSIONS: mm

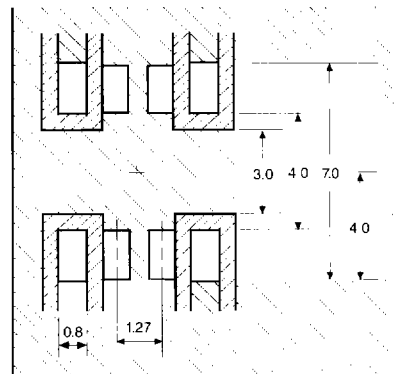
LDC30B030GC1600/1750/1900/2100/2500



LDC30B030GC0850/1000



LDC35B030GC0250



- LAND
- SOLDER RESIST
- NO PATTERN, SOLDER RESIST

PART NUMBERING SYSTEM

