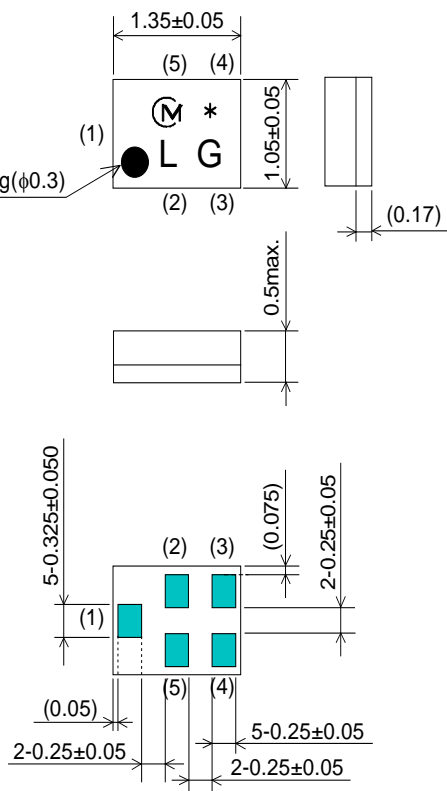


SAW FILTER FOR GSM 1900 Rx

Murata part number : SAFEA1G96FA0F00

Package Dimensions



Marking
: Laser Printing
(1) : Unbalance Port
(3)(4) : Balance Port
Others : Ground

Unit : mm

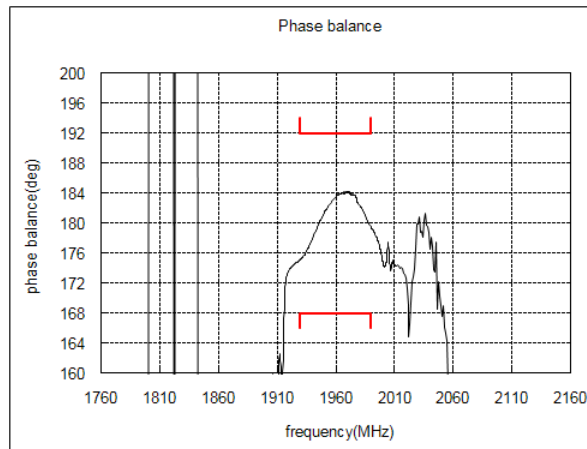
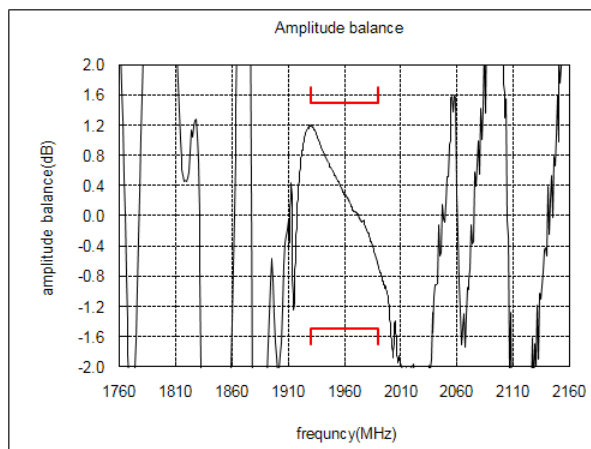
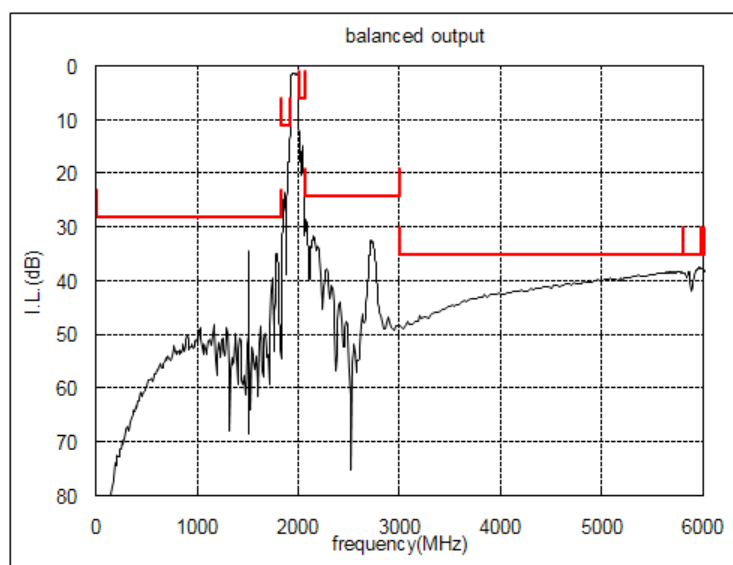
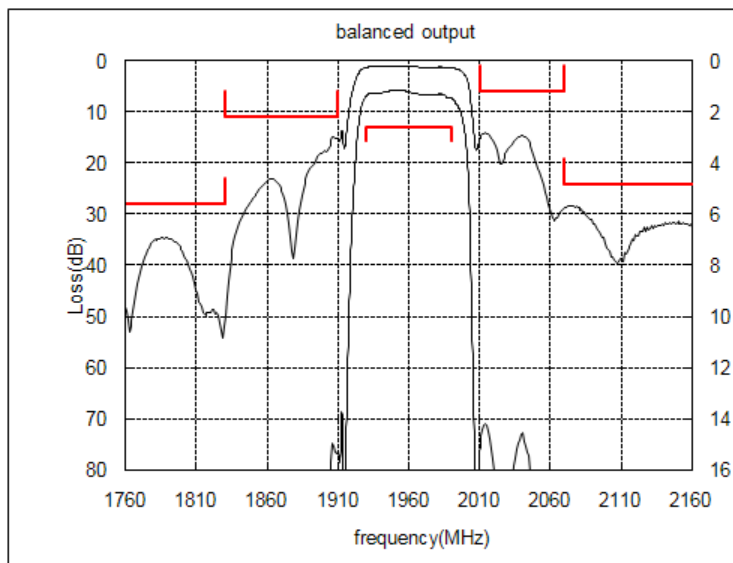
Specification

Item	Specification		
	-30 to 85°C	25±2°C	typ.
Nominal Center Frequency(fc)	1960MHz		
Insertion Loss (1930 to 1990MHz)	2.6 dB max.	2.0 dB max.	1.5 dB
Absolute Attenuation			
1) 0.1 to 1830 MHz	28 dB min.	28 dB min.	33 dB
2) 1830 to 1910 MHz	11 dB min.	11 dB min.	15 dB
3) 2010 to 2070 MHz	6 dB min.	12 dB min.	14 dB
4) 2070 to 3000 MHz	24 dB min.	24 dB min.	27 dB
5) 3000 to 5790 MHz	35 dB min.	35 dB min.	46 dB
6) 5790 to 5970 MHz	35 dB min.	35 dB min.	40 dB
7) 5970 to 6000 MHz	35 dB min.	35 dB min.	44 dB
Ripple Deviation (1930 to 1990MHz)	1.7 dB max.	0.9 dB max.	0.3 dB
VSWR (1930 to 1990MHz)	2.2 max.	1.8 max.	1.6
Amplitude Balance (1930 to 1990MHz)	±1.5dB max.	±1.5dB max.	±1.2dB
Phase Balance (1930 to 1990MHz)	180±12deg. max.	180±9deg. max.	180±5deg.
Unbalance Port Matching Impedance (nominal)	50Ω		
Balance Port Matching Impedance (nominal)	150Ω//27nH		
Input Signal Level	20mW (+13dBm), 2000 hours		

SAW FILTER FOR GSM 1900 Rx

Murata part number : SAFEA1G96FA0F00

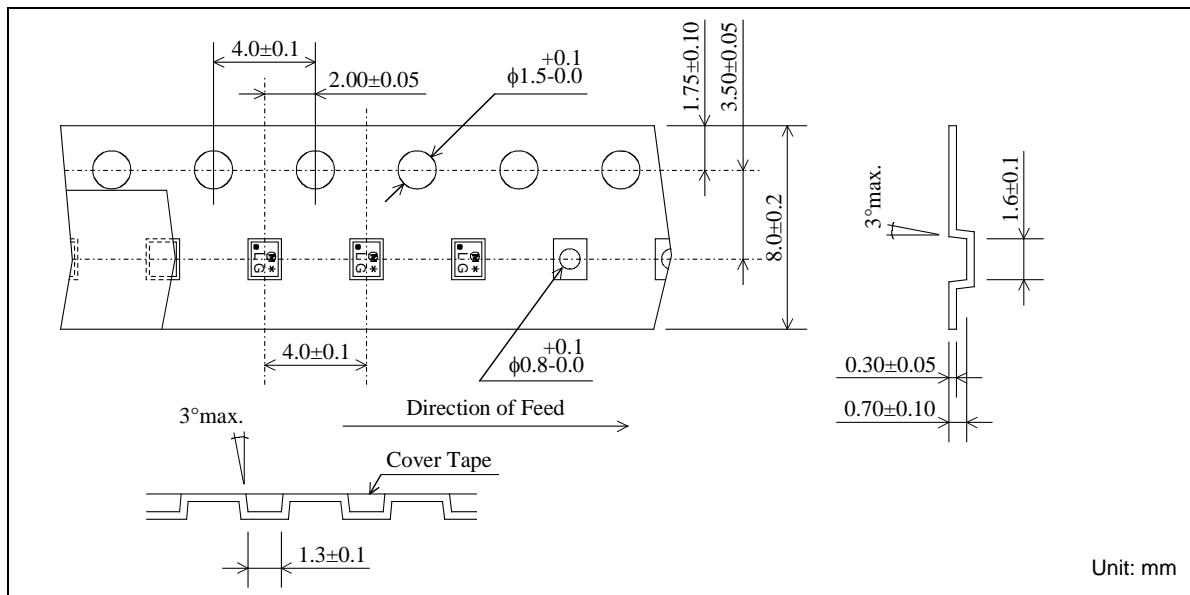
Frequency Performance



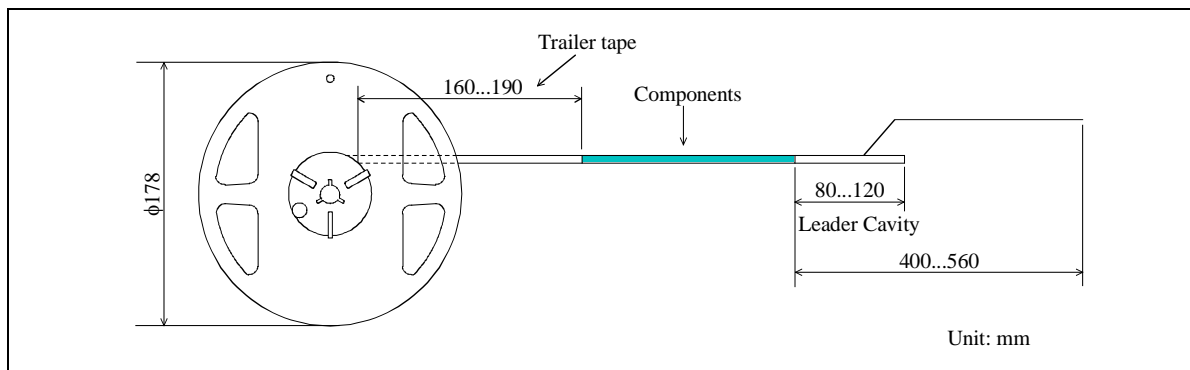
SAW FILTER FOR GSM 1900 Rx

Murata part number : SAFEA1G96FA0F00

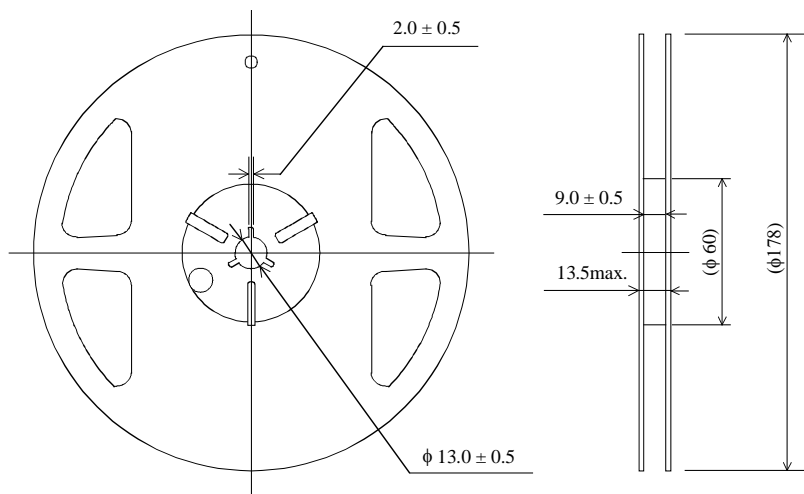
Dimensions of Carrier Tape



Dimensions of Tape



Dimensions of Reel

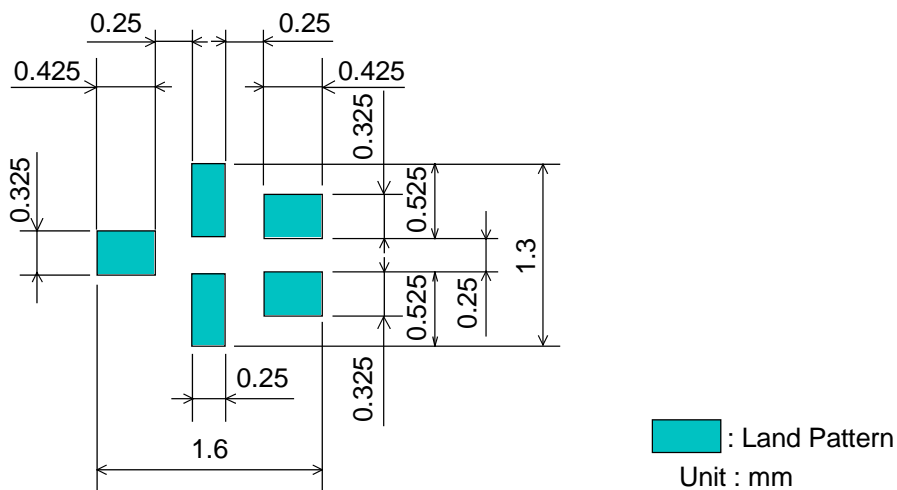


SAFEA1G96FA0F00R14 ... 4000pcs/reel
SAFEA1G96FA0F00R12 ... 2000pcs/reel

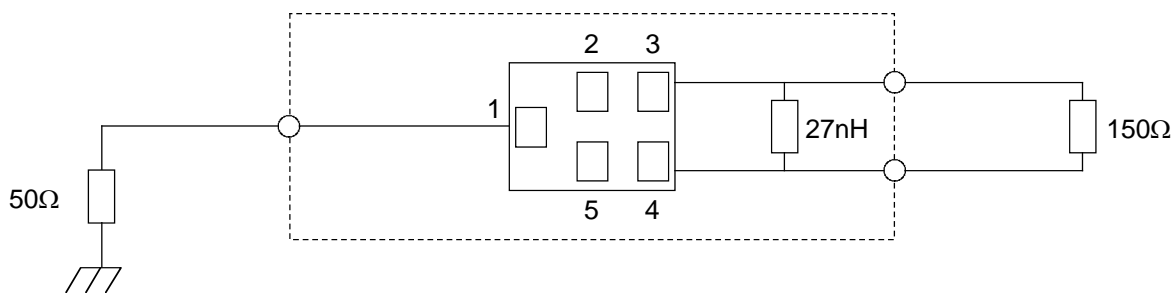
SAW FILTER FOR GSM 1900 Rx

Murata part number : SAFEA1G96FA0F00

Recommended Land Pattern



Test Circuit



SAW FILTER FOR GSM 1900 Rx

Murata part number : SAFEA1G96FA0F00

■ RoHS Compliance

This component is compliant with RoHS directive.

This component was always RoHS compliant from the first date of manufacture.

• Caution - Limitation of Applications

Please contact us before using our products for the applications listed below which require especially for the prevention of defects which might directly cause damage to the third party's life, body or property.

- a. Aircraft equipment
- b. Aerospace equipment
- c. Undersea equipment
- d. Nuclear control equipment
- e. Medical equipment
- f. Transportation equipment (vehicles, trains, ships, etc.)
- g. Traffic signal equipment
- h. Disaster prevention / crime prevention equipment
- i. Data - processing equipment
- j. Application of similar complexity and / or reliability requirements to the applications listed in the above

• This PDF Datasheet is downloaded from the website of Murata Manufacturing Co., Ltd. Therefore, it's specifications are subject to change or our products in it may be discontinued without advance notice. Please check with our sales representatives or product engineers before ordering.

• This PDF Datasheet has only typical specifications because there is no space for detailed specifications. Therefore, please approve our product specifications or transact the approval sheet for product specifications before ordering.