

BI-DIRECTIONAL COUPLER

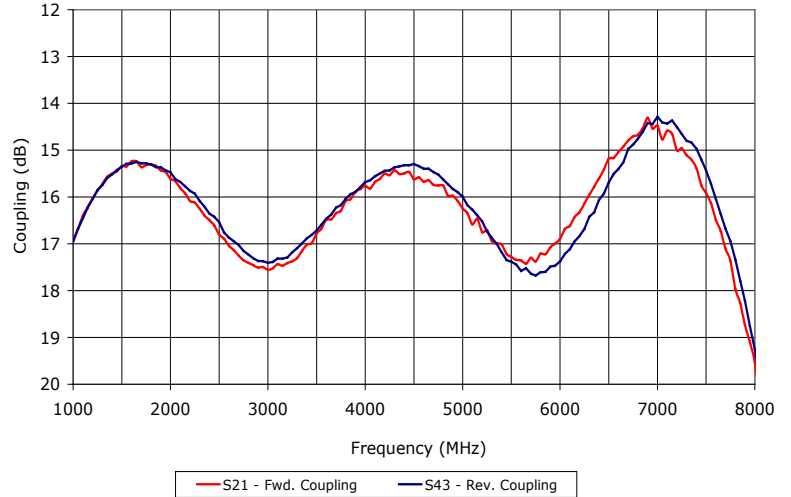
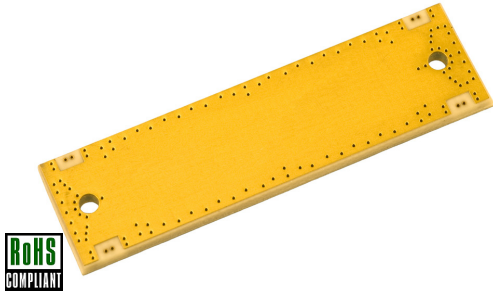
SYNSTRIIP[®] MODEL: SCS100800-16

WIDE BANDWIDTH

1000 - 7800 MHz

FEATURES:

- ▶ SYNSTRIIP[®] Technology
- ▶ Small Size, Surface Mount
- ▶ Optimum Performance



SPECIFICATIONS (Rev. B 12/20/10)

Frequency	1000 - 7800 MHz		
Coupling	16.8 dB \pm 1.5 dB (Nom.)		
Coupling Flatness	\pm 2.8 dB (Max.)		
Mainline Loss (dB)	Typ.	Max.	
	0.7	1.0	
Directivity (dB)	Freq. (MHz)	Typ.	Min.
	1000 - 4000	18	12
	4000 - 7800	14	5
Input Power Rating	25 Watts (Avg.)		

Impedance	50 Ohms (Nom.)
VSWR	1.3:1 (Typ.)
Operating Temperature Range	-40 to +85 °C
Storage Temperature Range	-55 to +100 °C

BI-DIRECTIONAL COUPLER

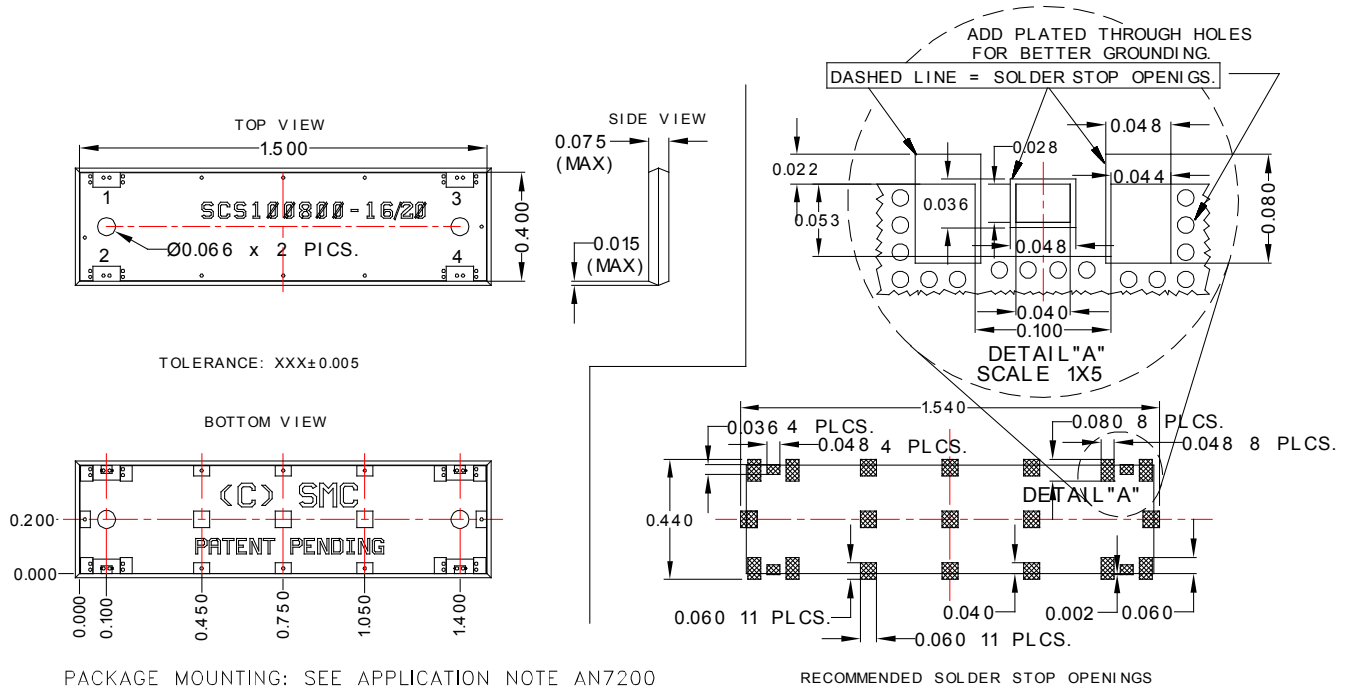
SYNSTRIP® MODEL: SCS100800-16

WIDE BANDWIDTH

1000 - 7800 MHz

Package # 321

REL-PRO® PATENT NO. 7,612,296



PORT CONFIGURATION

	1	2	3	4
In \ Out				
1		Coupled	Thru	Iso
2	Coupled		Iso	Thru
3	Thru	Iso		Coupled
4	Iso	Thru	Coupled	

* For directional coupler operation, connect 50 Ohms load from isolated port to ground.

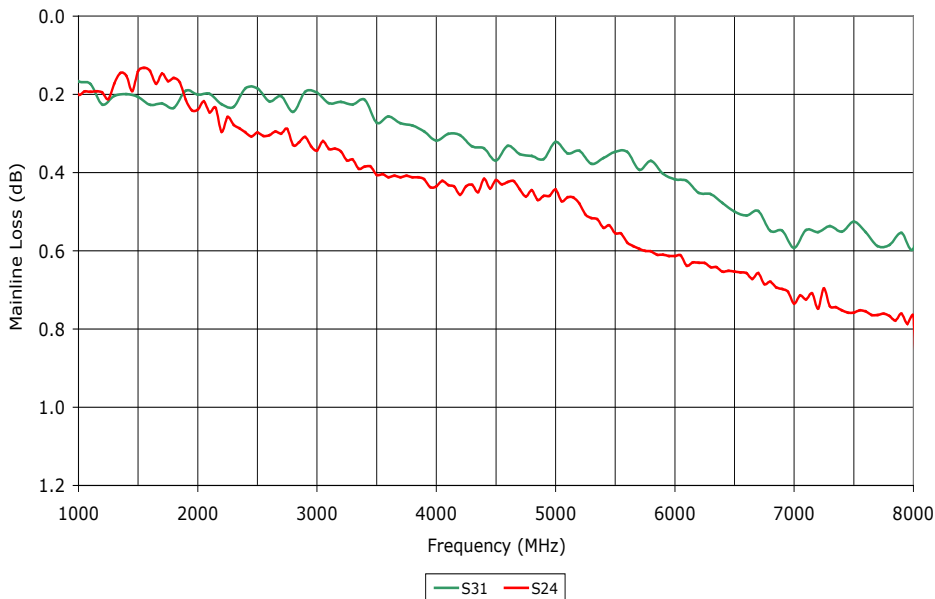
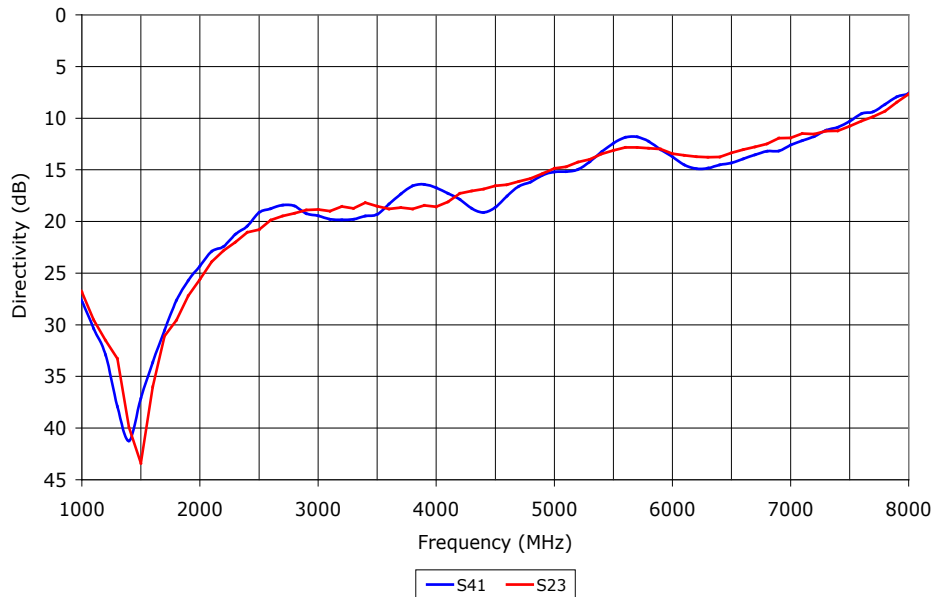
BI-DIRECTIONAL COUPLER

SYNSTRIIP[®] MODEL: SCS100800-16

WIDE BANDWIDTH

1000 - 7800 MHz

Data @ 25 °C



PERFORMANCE PLOTS



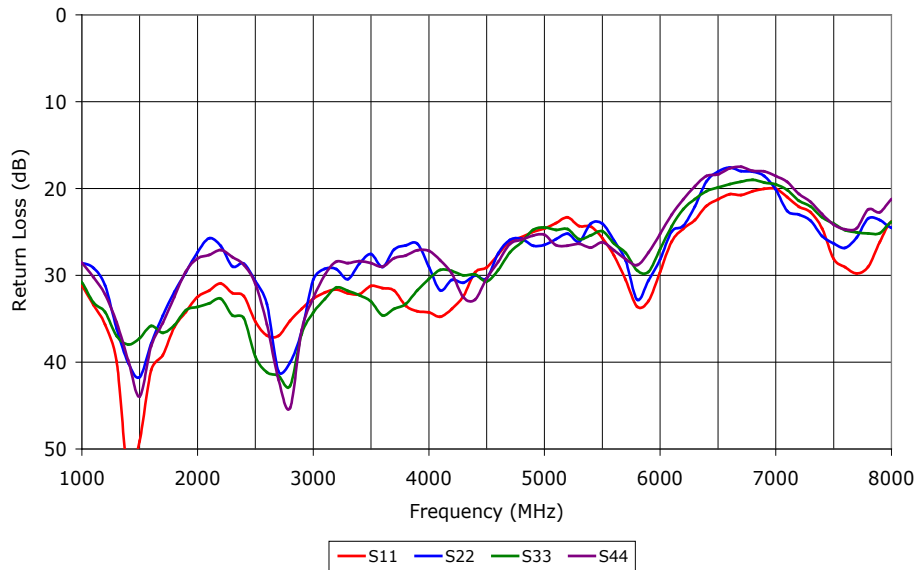
BI-DIRECTIONAL COUPLER

SYNSTRIIP[®] MODEL: SCS100800-16

WIDE BANDWIDTH

1000 - 7800 MHz

Data @ 25 °C



PERFORMANCE PLOTS

