

SQUARE FLANGE FEMALE RECEPTACLE

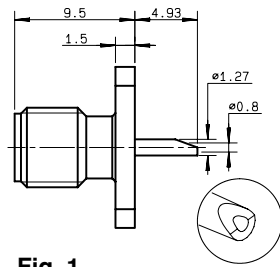
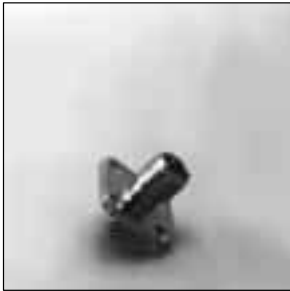


Fig. 1

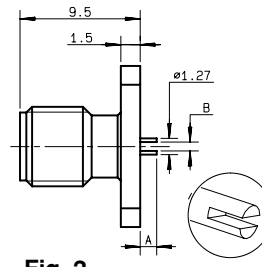


Fig. 2

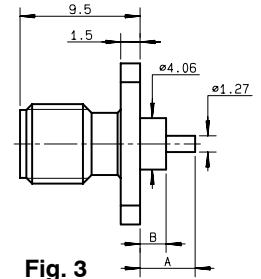


Fig. 3

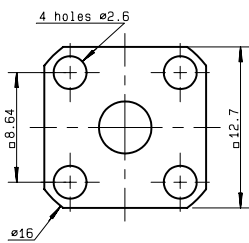


Fig. 1 to 4

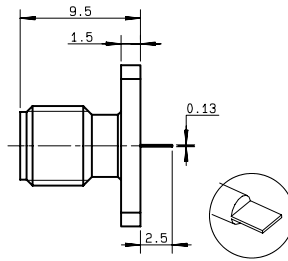


Fig. 4

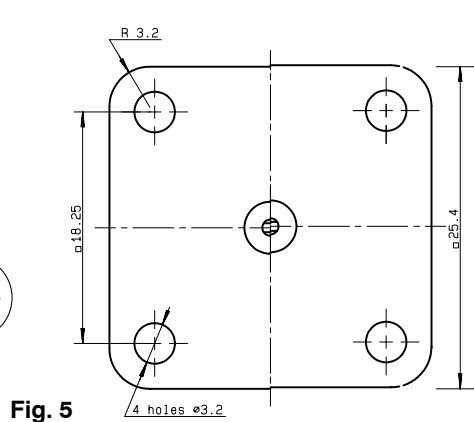
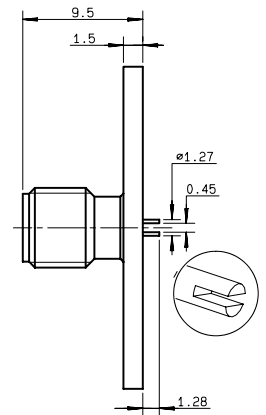


Fig. 5

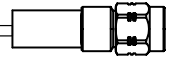


part number	fig.	A	B	panel drilling	finish	note
R124 403 120	1			P 04	BBR	
R124 403 123	1			P 04	Gold	
R124 498 030●	2	1,3	0,7	P 04	Gold	
R124 498 047●	2	2	0,51	P 04	BBR	
R124 510 000	4			P 04	BBR	
R124 510 003	4			P 04	Gold	
R124 409 503●	5			P 07	Gold	25,4 flange
R124 409 507●	5			P 07	BBR	
R124 414 000	3*	15,9	12,7	P 04	BBR	4 Indents
R124 414 003	3*	15,9	12,7	P 04	Gold	
R124 415 270	3*	17,9	15	P 04	BBR	
R124 415 273	3*	17,9	15	P 04	Gold	
R124 414 004	3*	15,9	12,7	P 04	Gold	Epoxy
R124 414 005	3*	15,9	12,7	P 04	BBR	
R124 415 274	3*	17,9	15	P 04	Gold	
R124 415 275	3*	17,9	15	P 04	BBR	

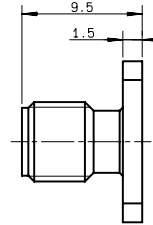
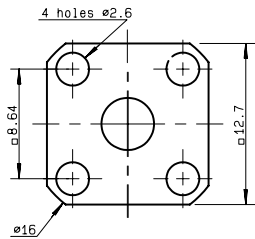
* : For more details, see Application guide for SMA extended dielectric receptacles D 1 125 DE.

● Upon request.

Standard packaging : 100 pieces



UNIVERSAL SQUARE FLANGE FEMALE RECEPTACLE



To be used with removable contacts and insulators pages : 22 and 23

part number	panel drilling	finish
R124 410 000	P 04	BBR
R124 410 003	P 04	Gold

NARROW FLANGE FEMALE RECEPTACLE

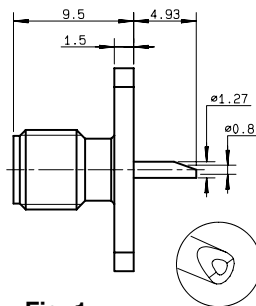


Fig. 1

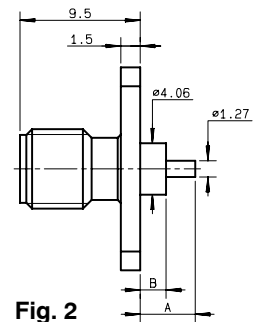
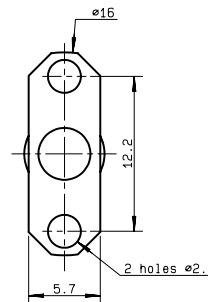
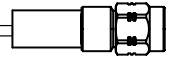


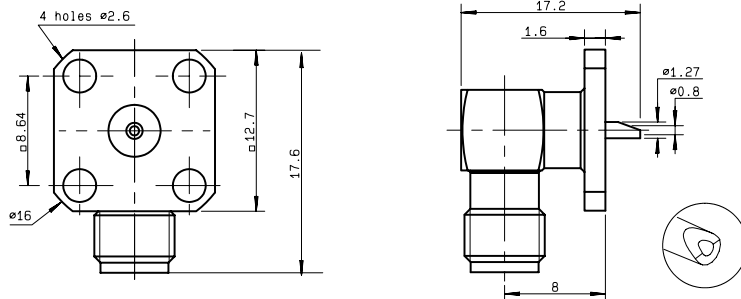
Fig. 2

part number	fig.	A	B	panel drilling	finish	note
R124 454 120	1			P 05	BBR	
R124 454 123	1			P 05	Gold	
R124 464 000	2*	15,9	12,7	P 05	BBR	4 Indents
R124 464 003	2*	15,9	12,7	P 05	Gold	
R124 464 270	2*	17,9	15	P 05	BBR	
R124 464 273	2*	17,9	15	P 05	Gold	
R124 464 004	2*	15,9	12,7	P 05	Gold	
R124 464 005	2*	15,9	12,7	P 05	BBR	Epoxy
R124 464 274	2*	17,9	15	P 05	Gold	
R124 464 275	2*	17,9	15	P 05	BBR	

* : For more details, see Application guide for SMA extended dielectric receptacles D 1 125 DE.



RIGHT ANGLE SQUARE FLANGE FEMALE RECEPTACLE



part number	panel drilling	finish
R124 654 000	P 02	BBR
R124 654 003	P 02	Gold

BULKHEAD FEEDTHROUGH STRAIGHT FEMALE RECEPTACLE

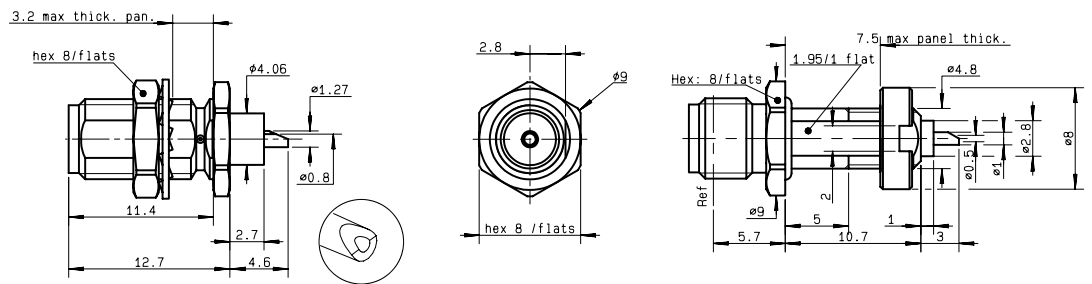
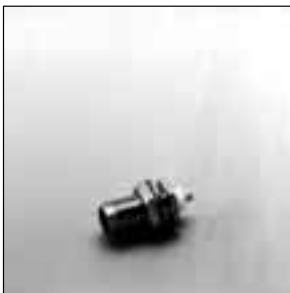


Fig. 1

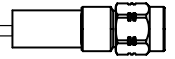
Fig. 2

part number	fig.	panel drilling	finish	note
R124 553 120	1	P 01	BBR	Rear mount
R124 553 123	1	P 01	Gold	Rear mount
R124 581 020●	2	P 10	BBR	Panel seal / Front mount

● Upon request

Standard packaging : 100 pieces





STRAIGHT FEMALE PCB RECEPTACLE

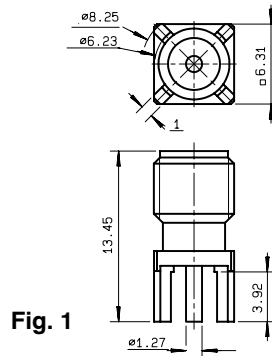


Fig. 1

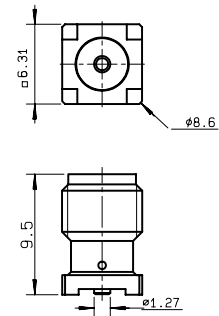


Fig. 2

part number	fig.	PCB pattern	finish	note
R124 426 120	1	P 03	BBR	
R124 426 121●	1	P 03	BBR + Tin-lead 60/40	
R124 426 123	1	P 03	Gold	
R124 426 850	1	P 03	BBR	Tube of 78 pieces
R124 426 853	1	P 03	Gold	Tube of 78 pieces
R124 427 000	2	M 09	Gold	Surface mount / Unit packaging
R124 427 800	2	M 09	Gold	Surface mount / Tape and reel of 100 pieces
R124 427 850	2	M 09	Gold	Surface mount / tube of 78 pieces

RIGHT ANGLE FEMALE PCB RECEPTACLE

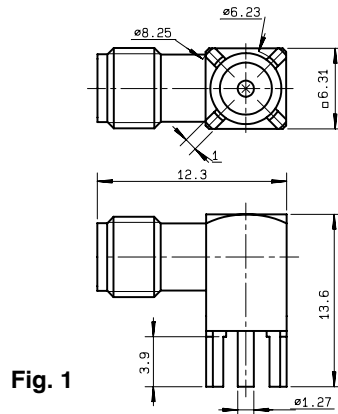


Fig. 1

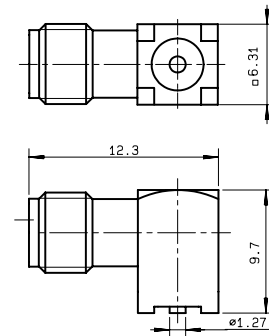


Fig. 2

part number	fig.	PCB pattern	finish	note
R124 680 120	1	P 03	BBR	
R124 680 123	1	P 03	Gold	
R124 680 130●	1	P 03	BBR + Tin lead 60/40	
R124 680 850	1	P 03	BBR	Tube of 40 pieces
R124 680 853	1	P 03	Gold	Tube of 40 pieces
R124 681 000	2	M 09	Gold	Surface mount / Unit packaging
R124 681 800	2	M 09	Gold	Surface mount / Tape and reel of 100 pieces
R124 681 850	2	M 09	Gold	Surface mount / tube of 40 pieces

● Upon request.

Standard packaging : 100 pieces