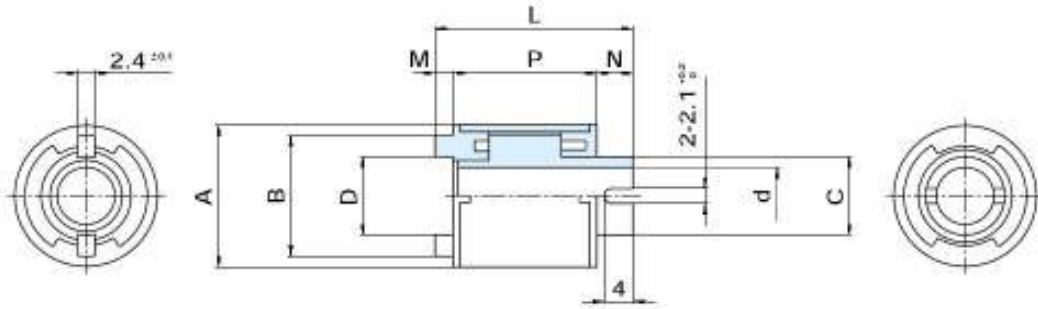


OPL-R

PM Magnetic Particle Torque Limiter

Types: 0.3, 0.6, 1.2

[PM: Permanent Magnet]



[Special Order]

OPL		0.3R		0.6R		1.2R	
Static Torque [in-lbs / N-m]		0.27 / 0.03		0.53 / 0.06		1.1 / 0.12	
Optional Torque Range [in-lbs / N-m]		0.17~0.35 / 0.02~0.04		0.35~0.53 / 0.04~0.06		0.53~1.06 / 0.06~0.12	
Max Slip Speed [rpm]		300		300		250	
Bore [mm]	d+0.1/-0	6	8	6	8	8	
Dimensions [mm]	A	20		20		20	
	B	17		17		17	
	C	11		11		11	
	D	11		11		11	
	L	27.5		27.5		34.5	
	M	2.5		2.5		2.5	
	N	5		5		5	
	P	20		20		27	
Weight [lbs / kg]		0.055 / 0.025		0.055 / 0.025		0.066 / 0.030	

[1" = 25.4mm]