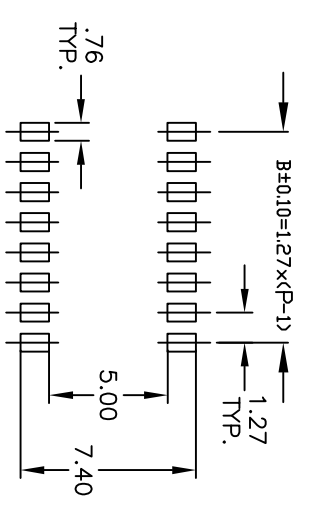


CIRCUIT (SHOWN 8 POS)

- NOTES:
1. ALL DIMENSIONS IN MM
 2. GENERAL TOLERANCE: X.X=±0.4
X.XX=±0.25
 3. TERM. NOS. FOR REFERENCE ONLY.
 4. CONTACT RATINGS: 25mA @24VDC.
 5. CONTACT MATERIAL: Copper Alloy w/
gold plate over Nickel Plate.
 6. PACKAGED: IN DISPENSING TUBE.
 7. TRAVEL: 1.00mm (Actuator)
 8. Δ DESIGNATE MAJOR:
 9. 2002/95/EC (ROHS) COMPLIANT.

RECOMMENDED P.C.B. LAYOUT
SHOWN 8 POSITION



B	15873	REMOVE TABLE, ADD ROHS	3/16/06	PH
A	11633	RELEASED FOR PRODUCTION	8/29/01	CB
REV.	ECN NO.	DESCRIPTION	DATE	CHKD

TITLE		DATE		DR	DWG	REV
KAN1108 RT (1/2 PITCH)		8/29/01		CJB	N111200	B
SCALE		DATE		DR	DWG	REV
3:1		8/29/01		CJB	N111200	B

THE INFORMATION CONTAINED IN THIS DOCUMENT IS PROPRIETARY TO E-SWITCH AND IS NOT TO BE COPIED OR TRANSMITTED

