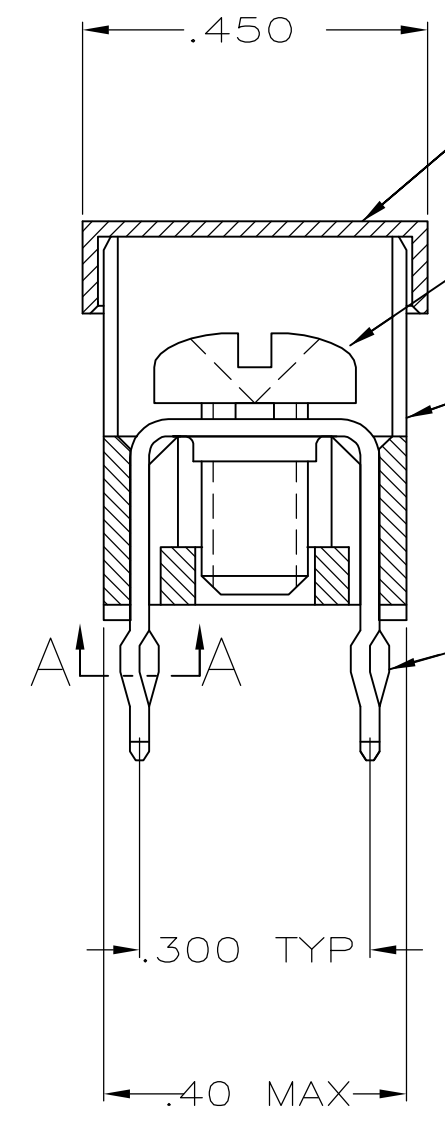
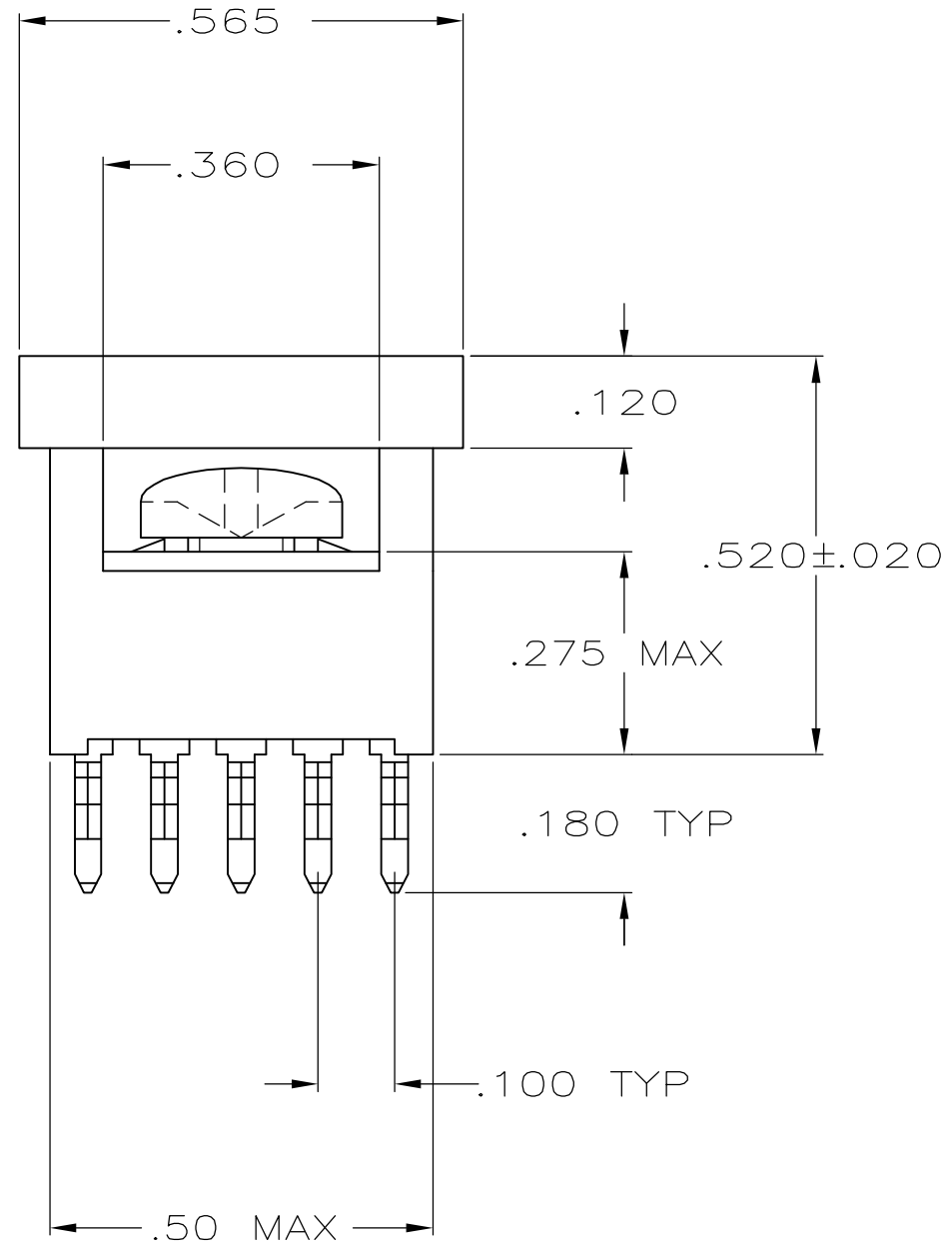


THIS DRAWING IS UNPUBLISHED. RELEASED FOR PUBLICATION
 © COPYRIGHT BY TYCO ELECTRONICS CORPORATION. ALL RIGHTS RESERVED.

LOC	DIST	REVISIONS					
GP	00	P	LTR	DESCRIPTION	DATE	DWN	APVD
			A	REV PER EC 0512-0573-04	05-04-05	JA	SF



- COVER
 - SCREW, 993879-1
SUPPLIED UNASSEMBLED, SEE TABLE
 - HOUSING
 - TAP
- 1 TO PREVENT THREAD STRIPPING, SCREW TORQUE SHOULD NOT EXCEED 9 IN LBS.
 - 2 TAP HOLE IS 6-32UNC-2B, TWO MIN THREADS.
 - 3 PACKAGED BULK.
 - 4 HOUSING: NYLON.
TAP: COPPER ALLOY 725, .025 THICK
 - 5 TAP: .000150 MATTE TIN OVER .000050 NICKEL
 6. REFERENCE APPLICATION SPECIFICATION 114-11000 FOR DRILL HOLE SIZES AND FINISHES.



SECTION A-A
 SCALE 10:1
 10 PLACES

3	YES	YES	5055557-4
3	YES	NO	5055557-3
PACKAGING	HOUSING AND TAP ASSEMBLED	SCREW	PART NO.

THIS DRAWING IS A CONTROLLED DOCUMENT.		DWN	05-04-05	Tyco Electronics Corporation	
		J. ALCORTA - DOCK5	05-04-05	Harrisburg, PA 17105-3608	
		CHK	05-04-05	Tyco Electronics	
		A. FRANTUM	05-04-05	NAME	
		APVD	05-04-05	S. FLICKINGER	
DIMENSIONS: INCHES		PRODUCT SPEC		TAP ASSEMBLY, POWER DISTRIBUTION	
TOLERANCES UNLESS OTHERWISE SPECIFIED:		108-11030		APPLICATION SPEC	
0 PLC ± -		114-11000		WEIGHT	
1 PLC ± -		-		SIZE	
2 PLC ± -		-		CAGE CODE	
3 PLC ± .010		-		DRAWING NO	
4 PLC ± -		-		RESTRICTED TO	
ANGLES ± -		-		A3 00779	
FINISH		-		G=5055557	
4		-		SCALE 4:1	
5		-		SHEET 1 OF 1	
		CUSTOMER DRAWING		REV A	