

SPECIFICATIONS

Mechanical

Mating Force: 0.75N max.
Unmating Force: 0.15N min.
Durability: 250 Cycles

Electrical

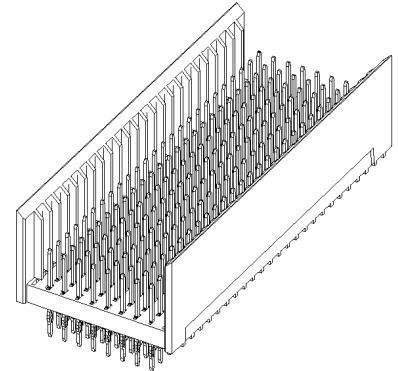
Voltage Rating: 500V
Current Rating: 1A
Contact Resistance: 20mW max.
Insulation Resistance: 10000MW min.

Physical

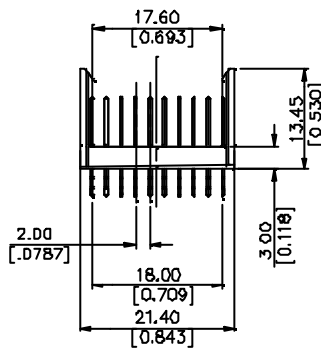
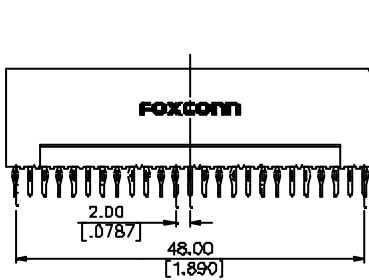
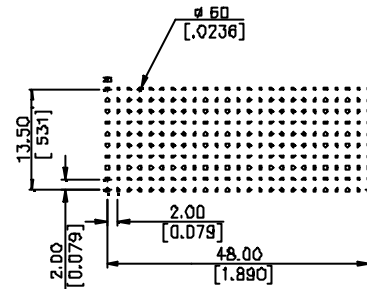
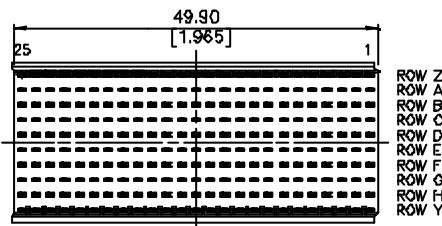
Housing: PBT UL 94V-0, Gray
Contact: Phosphor Bronze
Plating: See "ORDERING INFORMATION"

HARD METRIC CONNECTOR

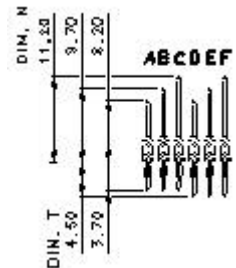
2H Series
Plug, Type E
2.0mm [.078"] Pitch
175 Pos. 25Column



DRAWING



RECOMMEND P.C.B.LAYOUT



ORDERING INFORMATION

PRODUCT NO.: 2H1 * * * * -PE 7 * *

ROW NO. ———— SELECTIVE PIN PATTERN
 8-8 ROWS ———— MATING AREA PLATING
 COLUMN NO. ———— 3-3U'
 25-25 COLUMNS ———— LOCATION PEG:
 D=VOID LOCATION PEG
 1=VOID LOCATION PEG

1	2	3	4	5	6	7	8	9	10	11	12	13	14	15	16	17	18	19	20	21	22	23	24	25	
A	A	A	A	A	A	A	A	A	A	A	A	A	A	A	A	A	A	A	A	A	A	A	A	A	A
B	B	B	B	B	B	B	B	B	B	B	B	B	B	B	B	B	B	B	B	B	B	B	B	B	B
C	C	C	C	C	C	C	C	C	C	C	C	C	C	C	C	C	C	C	C	C	C	C	C	C	
D	D	D	D	D	D	D	D	D	D	D	D	D	D	D	D	D	D	D	D	D	D	D	D	D	
E	E	E	E	E	E	E	E	E	E	E	E	E	E	E	E	E	E	E	E	E	E	E	E	E	
F	F	F	F	F	F	F	F	F	F	F	F	F	F	F	F	F	F	F	F	F	F	F	F	F	