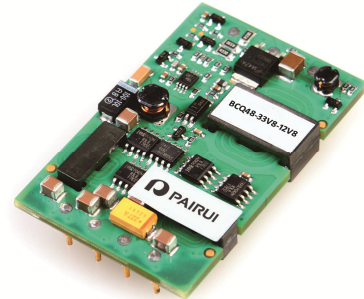


## BCQ SERIES, 1/4 BRICK, TWO OUTPUTS, UP TO 65W

### FEATURES:

- ✓ 5 years warranty
- ✓ 1500Vdc isolation voltage
- ✓ Two outputs
- ✓ Efficiency up to 87%
- ✓ Operating temperature range -40°C to +85°C
- ✓ Under voltage, over current, short circuit, over voltage protection
- ✓ Remote on/off
- ✓ Adjustable output voltage



Model	Input voltage (Vdc)	Vout/lout 1 (Vdc/A)	Vout/lout 2 (Vdc/A)	Efficiency Typ.
BCQ48-33V8-12V8	48(36~72)	3.3/8.0	1.2/8.0	85%
BCQ48-33V8-12V13		3.3/8.0	1.2/13.0	85%
BCQ48-33V8-15V8		3.3/8.0	1.5/8.0	85%
BCQ48-33V8-15V12		3.3/8.0	1.5/12.0	85%
BCQ48-33V8-18V8		3.3/8.0	1.8/8.0	85%
BCQ48-33V8-18V10		3.3/8.0	1.8/10.0	85%
BCQ48-33V8-25V8		3.3/8.0	2.5/8.0	85%
BCQ48-33V9-25V8		3.3/9.0	2.5/8.0	85%
BCQ48-50V3-33V4		5.0/3.0	3.3/3.5	85%
BCQ48-50V6-33V7		5.0/6.0	3.3/7.0	85%
BCQ48-120V7-120V7			±12.0/±2.7	87%

Notes: other input and output models may available on request.

### ELECTRICAL

Input voltage range	48Vdc	36-72Vdc
Remote control	Negative logic	OFF: High level or left close ON: Low level or grounded
Output power	Input voltage range	30-65W
Output voltage accuracy	Input voltage range	±1%
	Full load range	±3%
Output voltage adjustable	Positive	±10%
Line regulation	Full load	Vo1,vo2 ±0.2%
Load regulation	10%-100% full load	Vo1,vo2 ±0.5%
Dynamic response (transient/recovery time)	25%-50%-75% load capability	ΔVo/Δt: ±4.0%/500μs
Ripple and noise	Parallel test, 20MHz wide range	80mVp-p max.

**BCQ SERIES, 1/4 BRICK, TWO OUTPUTS, UP TO 65W**

**ELECTRICAL**

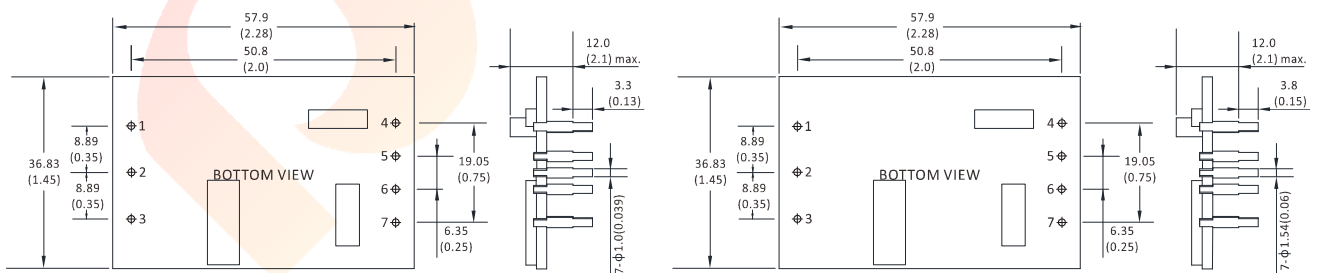
Operating frequency	Typical value	300KHz typ.
Isolation voltage	Input to output	1500Vdc
Isolation resistance	---	10MΩ
Safety	---	IEC-60950-1, UL-60950-1 EN-60950-1, GB4943
Temperature coefficient	---	200ppm
Operating temperature range	Auxiliary heat sink	-40°C to +85°C
Storage temperature range	---	-40°C to +100°C
Over temperature protection	Typical	110°C typ.
Under voltage protection	---	Yes
Over current protection	---	Yes
Short circuit protection	---	Yes
Over voltage protection	---	Yes
Relative humidity	---	95% max.
Packing	---	Hole package
MTBF	Bellcore TR-332, 25°C	2x10 <sup>6</sup> Hrs

**Notes: Unless otherwise specified, all the parameters of the test conditions are as follows: ambient temperature 25°C, the nominal input voltage, pure resistive nominal load.**

**MECHANICAL**

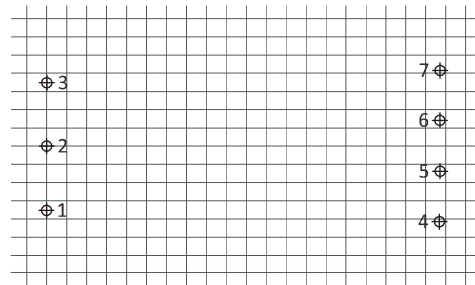
**LOW CURRENT**

**LARGE CURRENT**



## BCQ SERIES, 1/4 BRICK, TWO OUTPUTS, UP TO 65W

### MECHANICAL



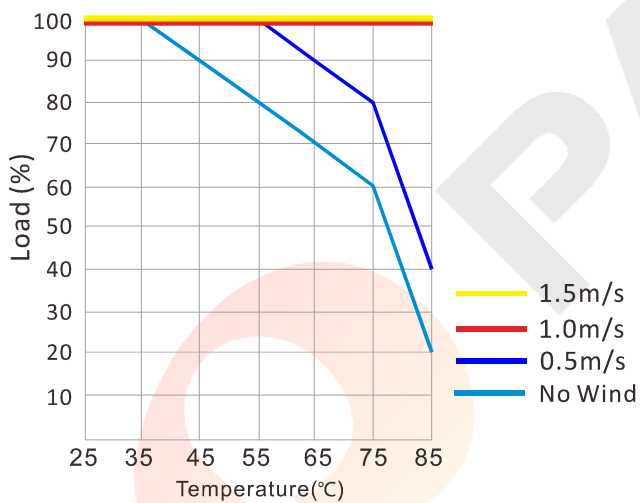
### CONNECTION

PIN #	DUAL
1	-Vin
2	REM
3	+Vin
4	+Vo2
5	GND
6	TRIM
7	+Vo1

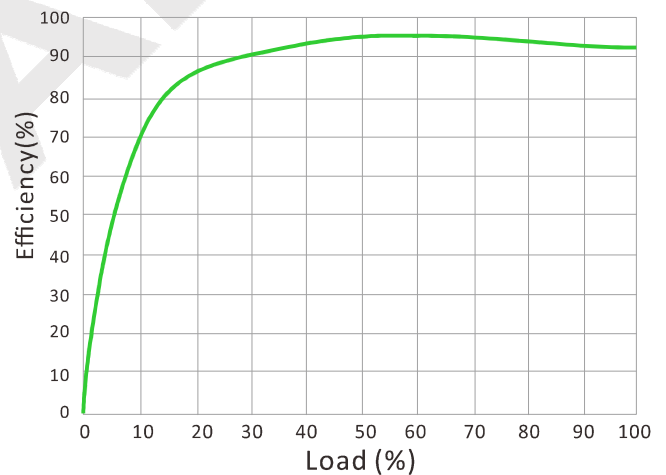
Note:

\* Unit is mm(inch).

### DERATING CURVE



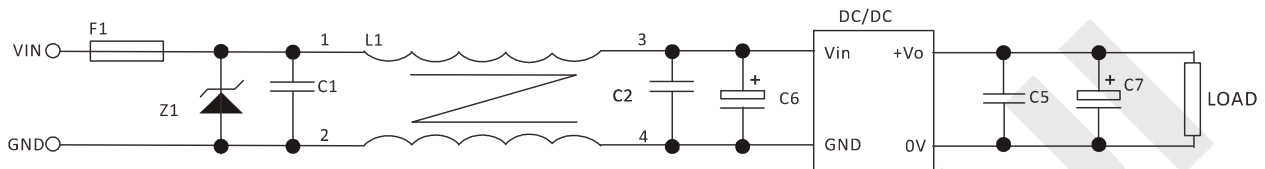
### EFFICIENCY CURVE



## BCQ SERIES, 1/4 BRICK, TWO OUTPUTS, UP TO 65W

### NOTES

#### RECOMMENDED TEST AND APPLICATION CIRCUIT



1. TVS&FUSE be helpful with over voltage protection and inrush limiting. Recommended FUSE better be 1.5~2times of the rated current .
2. The input filter capacitor C6 could select the aluminum electrolytic capacitors or tantalum capacitors, and the withstand voltage should be greater than the highest input voltage. Recommended capacitor should be between  $22\mu\text{F}\sim 100\mu\text{F}$ .
3. C1,C2 for the input filter capacitor,  $0.1\sim 1\mu\text{F}$  high-frequency ceramics capacitor or chip capacitor are recommended. The withstand voltage of output filter C5, C7 should be greater than the highest output voltage. Recommended capacitor of C7 better within  $100\mu\text{F}$  and C5 connected with the chip to reduce the input voltage peak, recommended  $0.1\sim 1\mu\text{F}$  high-frequency ceramics capacitor or chip capacitor.