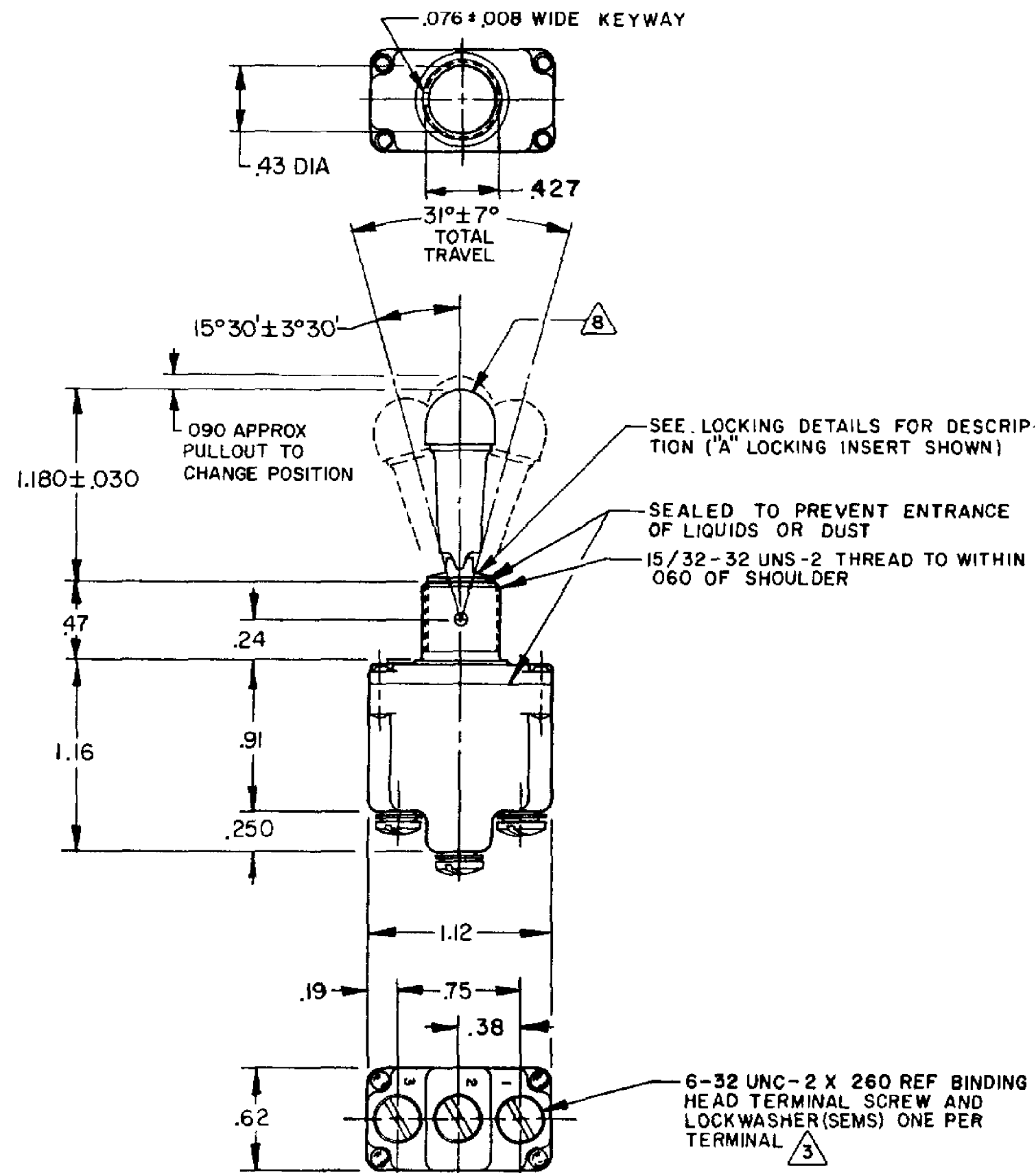


HONEYWELL
PART NUMBER
1TL150_SERIES_CHART 1

REV	DOCUMENT	CHANGED BY	CHECK
16	0008574	KR 21OCT04	AK

LISTINGS	CATALOG LISTING	AVAILABLE LOCKING COMBINATIONS FOR CONFIGURATION SEE LETTERED DETAILS	CIRCUIT MADE WITH TOGGLE LEVER IN			MILITARY RATING (AMPS)		
			KEYWAY SIDE (1-2)	CENTER (1-2)	OPPOSITE KEYWAY (2-3)	RESISTIVE LOAD DC VOLTS	LAMP LOAD VDC	INDUCTIVE LOAD VDC
ITL150-1A	ITL150-1	A,B,D,E,F,G,H,K,L,M,N,P	ON	OFF	ON	20	75	15
ITL150-1B	ITL150-2	D,F,G	OFF	NONE	ON	6	5	3
ITL150-1D	ITL150-3	D,F,G	ON	NONE	ON	15	6	5
ITL150-1E	ITL150-2I	E,F,K,M	NONE	OFF	ON	15	6	4
ITL150-1F	ITL150-3I	E,F,K,M	NONE	ON	ON	15	6	4
ITL150-1G	ITL150-4	F	MOM OFF	NONE	ON	15	6	4
ITL150-1H	ITL150-5	E,F,K,L,M,N	MOM ON	OFF	ON	15	6	4
ITL150-1I	ITL150-6	F	MOM ON	NONE	OFF	15	6	4
ITL150-1J	ITL150-7	E,L,N	MOM ON	OFF	MOM ON	15	6	4
ITL150-1K	ITL150-8	F	MOM ON	NONE	ON	15	6	4
ITL150-1L	ITL150-2D	F	MOM ON	NONE	ON	15	6	4
ITL150-1M	ITL150-5I	E	NONE	ON	MOM ON	15	6	4
ITL150-1N	ITL150-6I	E	MOM ON	OFF	NONE	15	6	4
ITL150-1P	ITL150-2F	E	NONE	ON	MOM ON	15	6	4
ITL150-1Q	ITL150-2G	E	MOM ON	OFF	NONE	15	6	4



LISTINGS	"A"	"B"	"D"	"E"	"F"	Ø8 REF
ITL150-3D	LOCKED IN THREE POSITIONS	LOCKED IN CENTER AND EXTREME POSITION (KEYWAY SIDE)	LOCKED OUT OF CENTER POSITION	LOCKED IN CENTER POSITION	LOCKED IN EXTREME POSITION (OPPOSITE KEYWAY)	.60 DIA LOCK WASHER
ITL150-3F						
ITL150-3G						.05 .040 .110 .72 DIA LOCKING RING
ITL150-2I						
ITL150-2F						.078 .56 HEX NUT (2)
ITL150-2K						
ITL150-2M						
ITL150-3I						
ITL150-3I						
ITL150-3I						
ITL150-4F						
ITL150-5E						
ITL150-5F						
ITL150-5K						
ITL150-5L						
ITL150-5M						
ITL150-5N						
ITL150-6F						
ITL150-7E						

- NOTES:
- SWITCHES ARE CAPABLE OF WITHSTANDING A TEMPERATURE OF 160°F CONTINUOUSLY AT FULL RATED LOAD
 - CIRCUIT DESIGNATION AND MICRO SWITCH CATALOG LISTING MARKED ON SIDE OF SWITCH
 - FURNISHED UNASSEMBLED
 - FOR TERMINAL COVER, SEE MICRO SWITCH CATALOG LISTING 5PA7
 - KEYWAY SHOWN ON LEFT SIDE
 - SUFFIX LETTER MUST BE ADDED FOR DESIRED TYPE OF TOGGLE LOCKING. SEE CHART FOR AVAILABLE LOCKING COMBINATIONS
 - APPLIES ONLY TO "ON" AND "MOMENTARY ON" POSITIONS
 - FLAT WHITE, RESILIENT SILICONE RUBBER (APPROX 50 DUROMETER)
 - FAA PMA MUST BE MARKED ON SWITCH
 - FOR MANUFACTURING DETAIL SEE THE CORRESPONDING ASSEMBLY DRAWING FOR EACH LISTING FOR FAA-PMA
 - WEIGHT: .08 LBS APPROX

L191 15A 125, 250, 277 VAC
1/2HP 125 VAC
1HP 250, 277 VAC
5A 125 VAC "L"

L192 10A 125, 250, 277 VAC
1/4HP 125 VAC,
1/2HP 250, 277 VAC
3A 125 VAC "L"

DESIGN UNITS: INCH
TOLERANCES UNLESS NOTED:
NO PLACE X ± 0.040
ONE PLACE .X ± 0.030
TWO PLACE .XX ± 0.015
THREE PLACE .XXX ± 0.005
FOUR PLACE .XXXX ± 0.0005
ANGLES ± 3

THIRD ANGLE PROJECTION

DRAWN GJW 13MAY97
CHECK TSM 23MAY97

THIS DRAWING COVERS A PROPRIETARY ITEM AND IS THE PROPERTY OF HONEYWELL. THIS DRAWING IS NOT TO BE COPIED OR USED WITHOUT THE PERMISSION OF HONEYWELL.

INTERPRET PER ASME Y14.5M-1994 OTHER HONEYWELL ENGINEERING STANDARDS MAY APPLY

RASTER

Honeywell

TITLE SWITCH - TOGGLE

SIZE C TYPE I DRAWING NAME 1TL150_SERIES_CHART 1 REV 16

SCALE 1:1 SHEET 1 OF 1